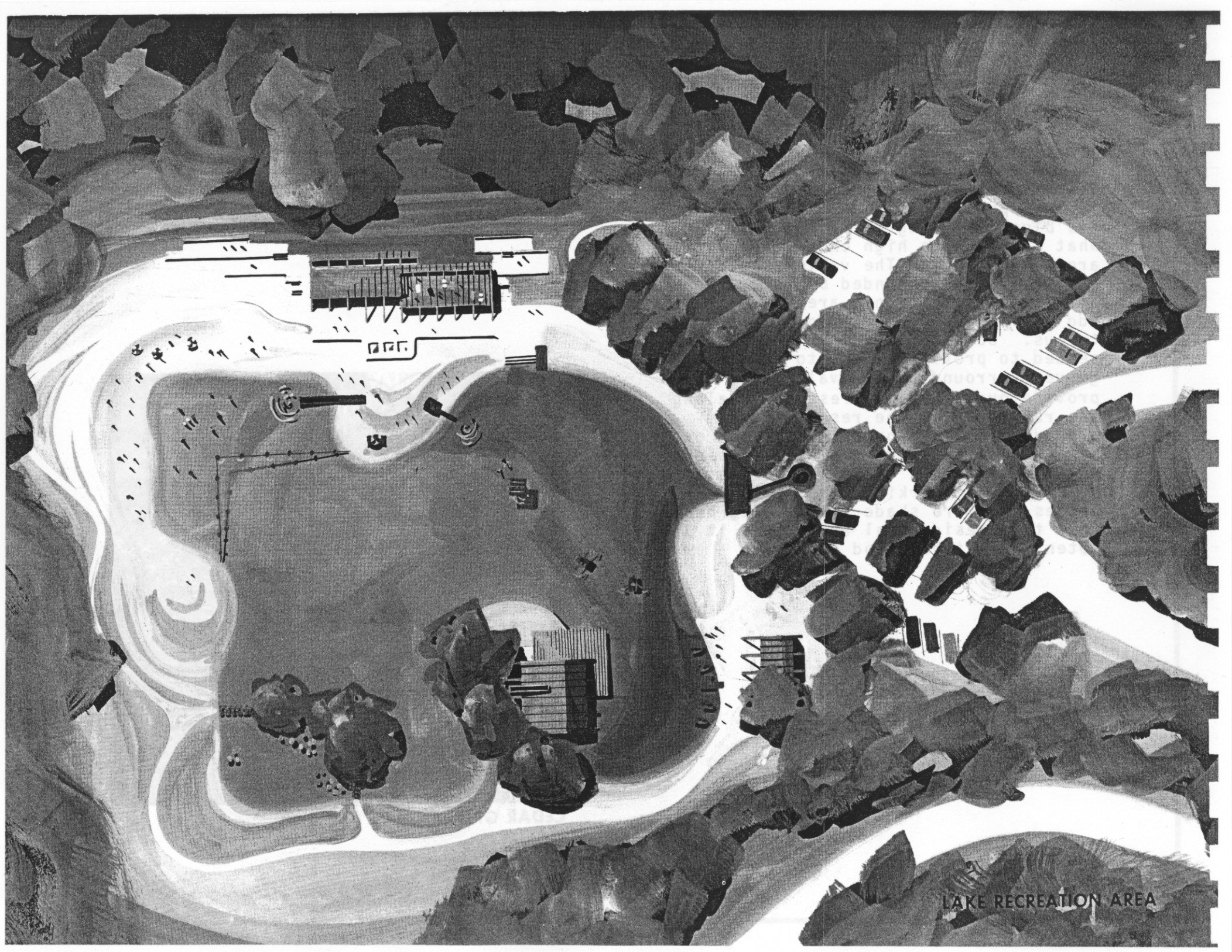


RESERVOIR SITE

This valley is one of the most remote in the park, although the Pasadena Freeway cuts across the lower end. The reservoir itself dominates the valley and provides a touch of beauty with its blue sparkling water which is somewhat marred by a high chain link fence around the edge. The valley above the reservoir is surrounded by forest and a small hike-in picnic area which will add a pleasant facility for the adventurous. Some parking in the canyon is needed to provide access to trails and groves surrounding the valley and to provide overlooks and rest spots along the road. Below the reservoir and around the corner by Park Row is a picnic area which is worthy of expansion into a first rate facility, complete with adequate parking, restrooms, barbecues and more shade trees. Its nearness to a residential area makes it a potential neighborhood park.



CEDAR GROVE



LAKE RECREATION AREA