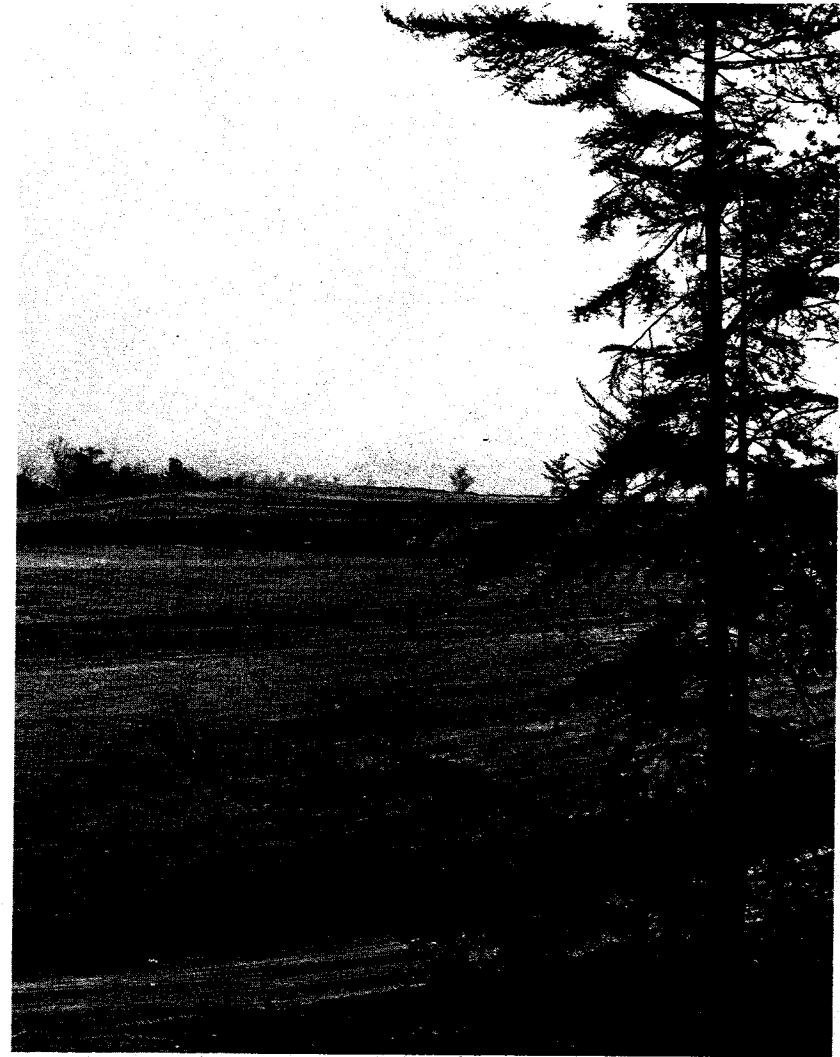
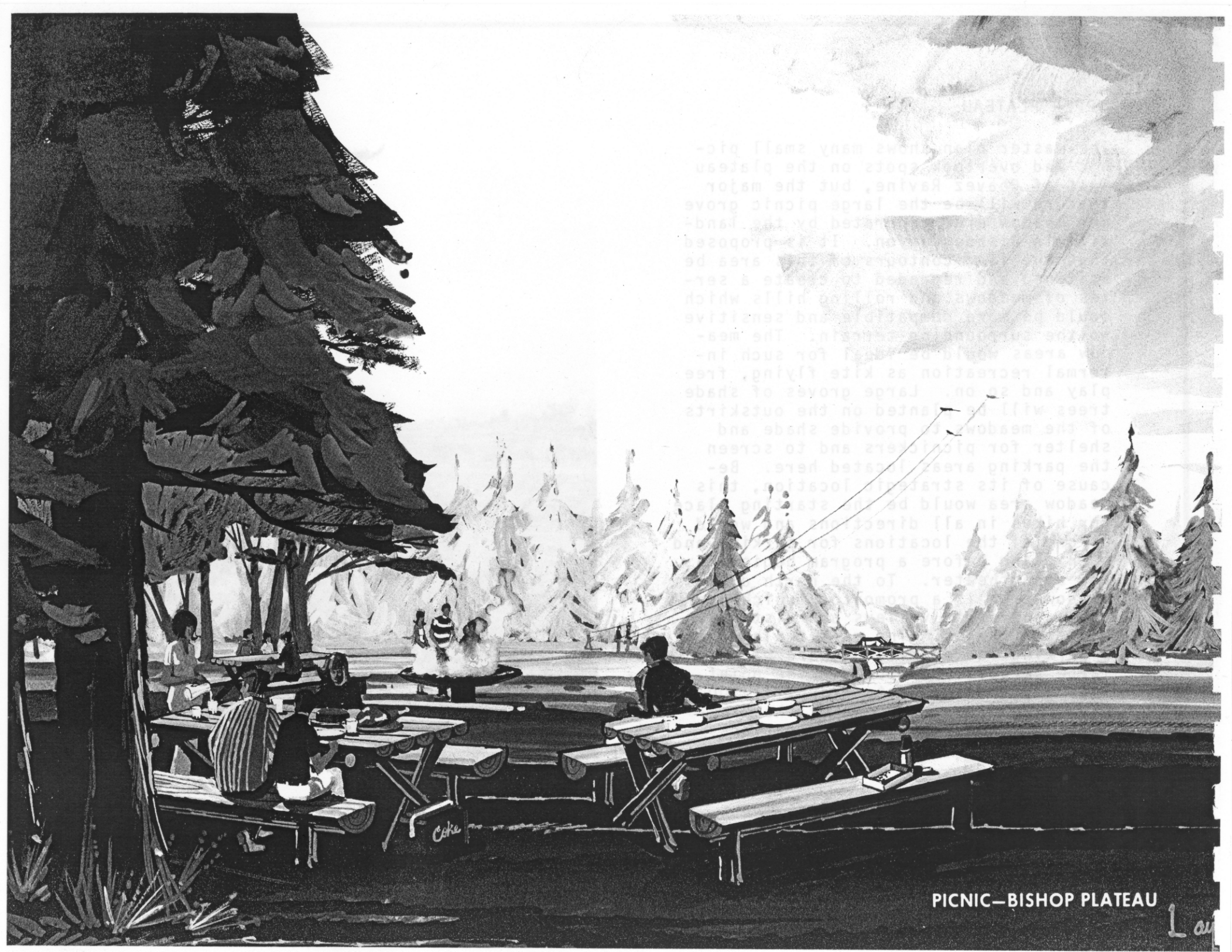


UPPER PLATEAU

The master plan shows many small picnic and overlook spots on the plateau east of Chavez Ravine, but the major feature will be the large picnic grove and meadow area generated by the landfill in Bishop Canyon. It is proposed that the land contours of this area be softened and regraded to create a series of meadows and rolling hills which could be more compatible and sensitive to the surrounding terrain. The meadow areas would be ideal for such informal recreation as kite flying, free play and soon. Large groves of shade trees will be planted on the outskirts of the meadows to provide shade and shelter for picnickers and to screen the parking areas located here. Because of its strategic location, this meadow area would be the starting place for hikes in all directions and would be one of the locations for parking and picnicking before a program begins in the amphitheater. To the north of this meadow area is a promontory which overlooks the north valleys and distant mountain ranges. The master plan shows a parking lot and meadow here with a large pergola structure on the point. This would accommodate groups of 100 or more and could be one of the "reserved by request" picnic locations for special gatherings.





...shows many small pic-
nic spots on the plateau
...Ravine, but the major
...the large picnic grove
...the land-
...proposed
...areas be
...& ser-
...hills which
...sensitive
...The mes-
...for such in-
...tree
...shade
...trees will
...on the outskirts
...and
...provide shade and
...shelter for picnickers and to screen
...the parking area located here. Be-
...cause of its strategic location, its
...in all directions.
...locations for
...a program
...To the

PICNIC—BISHOP PLATEAU

Lau