



**CITY OF LOS ANGELES  
DEPARTMENT OF RECREATION & PARKS**



# *Spring*



*2024*



@DENKERRECREATIONCENTER

## **DENKER RECREATION CENTER**

1550 W. 35th Pl.  
Los Angeles, CA 90018  
Office #: (323) 733-8367  
Email:

**DENKER.RECREATIONCENTER@LACITY.ORG**

# DENKER REC. CENTER

1550 W. 35th PL.  
Los Angeles, CA. 90018  
(323)733-8367

Denker.RecreationCenter@LACity.org



# After School Club

Monday - Friday  
2:00pm - 6:00pm



**MONTHLY  
FEE:**

**\$120**

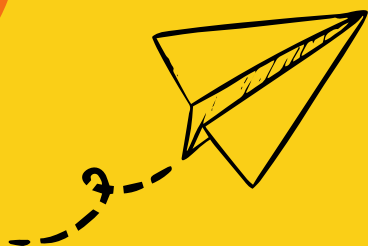
**PER MONTH**



## WHAT WE PROVIDE:

**MON-FRI  
GRADES: K-6TH  
2:00PM - 6:00PM**

- Homework help
- Enrichment program
- Tutoring
- Recreation activities
- Evening snack







# DENKER REC. CENTER



**REGISTRATION STARTS**

**2/3/2024**

## YOUTH CO-ED BASKETBALL

FEE INCLUDES: UNIFORM,  
AWARDS AND OFFICIALS

# \$10



## YOUTH CO-ED BASKETBALL

GAME DAYS  
**EVERY SATURDAY**

**9:30A-10:30AM**

**11AM-12PM**

**12PM-2PM**

**2PM-4PM**

### DIVISION

PEEWEE/ROOKIE  
MINOR  
MAJOR  
JUNIOR

### AGES

5yr-8yr old  
9yr-10yr old  
11yr - 12yr old  
13yr - 15yr old

### GAME TIME

9:30am-10:30am  
11:00am-12:30pm  
12:30pm-2:00pm  
2:00pm-4:00pm

## FIRST GAME STARTS: 4/6/24

## LAST GAME ENDS 6/8/24

1550 W. 35th PL LA, CA 90018

Phone #: (323) 733-8367

Denker.RecreationCenter@LACity.org



SCAN QR  
CODE OR  
VISIT

Register  
here

[laparks.org/reccenter/denker](http://laparks.org/reccenter/denker)

Persons with disabilities are encouraged to participate in our classes and programs. Reasonable accommodations may be made with prior arrangement. "Achieving Gender Equity through a continuous commitment to Girls and Women in Sports" This program is subject to cancellation.

"PlayLA Youth and Adaptive Sports Program is made possible by the LA28 Olympic and Paralympic Games, allowing youth to participate for \$10. Waivers are available, ask for details.



# DENKER REC. CENTER



# PLAY LA

**REGISTRATION STARTS**  
**2/3/2024**

## CO-ED BASEBALL

FEE INCLUDES: UNIFORM,  
AWARDS AND OFFICIALS

# \$ 10

## CO-ED BASEBALL

GAME DAYS  
EVERY SATURDAY

# \$ 10

### DIVISION

T-BALL  
COACH-PITCH  
MINOR/MAJOR  
JUNIOR

### AGES

5yr - 7yr old  
8yr - 10yr old  
11yr - 13yr old  
14yr - 16yr old

### TIME OF GAME

9:00am-10:30am  
11:00am-1:00pm  
1:30PM-3:00PM  
3:00PM-5:00PM

## FIRST GAME STARTS: 4/6/24

## LAST GAME ENDS 6/8/24

1550 W. 35th PL LA, CA 90018

Phone #: (323) 733-8367

Denker.RecreationCenter@LACity.org



SCAN QR  
CODE OR  
VISIT

Register  
here

[LAPARKS.ORG/RECCENTER/Denker](https://LAPARKS.ORG/RECCENTER/Denker)

**NO REFUNDS WILL BE GRANTED UNLESS PROGRAM IS CANCELED**

Persons with disabilities are encouraged to participate in our classes and programs. Reasonable accommodations may be made with prior arrangement. "Achieving Gender Equity through a continuous commitment to Girls and Women in Sports" This program is subject to cancellation.





# DENKER REC. CENTER



# PLAY LA

**COMIENZA EL REGISTRO:**  
**2/03/2024**



## BEISBOL MIXTO:

Precio incluye: uniforme,  
premios y oficiales

# \$ 10

## BEISBOL MIXTO:

Días de juego son todos  
Los sábados:

# \$ 10

### DIVISIÓN

T-BALL  
COACH-PITCH  
MINOR/MAJOR  
JUNIOR

### AÑOS

De 5 a 7 años  
De 8 a 10 años  
De 11 a 13 años  
De 14 a 16 años

### TIEMPO DE JUEGO

9:00am-10:30am  
11:00am-1:00pm  
1:30PM-3:00PM  
3:00PM-5:00PM

**El primer juego comienza:  
el 6 de abril de 2024**

**El último juego termina:  
8 de junio de 2024**

1550 W. 35th PL LA, CA 90018

Phone #: (323) 733-8367

Denker.RecreationCenter@LACity.org



Escanea  
el código  
QR o  
visita:

[LAPARKS.ORG/RECCENTER/Denker](https://LAPARKS.ORG/RECCENTER/Denker)

Registrar  
aquí

**No se darán reembolsos a menos que se cancels el programa**

Persons with disabilities are encouraged to participate in our classes and programs. Reasonable accommodations may be made with prior arrangement. "Achieving Gender Equity through a continuous commitment to Girls and Women in Sports" This program is subject to cancellation.



# TRACK & FIELD



**Registration Starts**  
**3/04/24**

**AGES 8-15**  
**\$10**  
**PER CHILD**

**Every Thursday**  
**4:00pm - 5:00pm**

**10 WEEK SESSION**

**CLASSES BEGIN APRIL 8TH, 2024**

**CLASSES ENDS JUNE 22, 2024**

**DENKER REC CENTER**

**1550 W. 35TH PL**

**LOS ANGELES, CA 90018**

**(323) 733-8367**



SCAN QR  
CODE OR  
VISIT

[laparks.org/reccenter/denker](https://laparks.org/reccenter/denker)

Persons with disabilities are encouraged to participate in our classes and programs. Reasonable accommodations may be made with prior arrangement. "Achieving Gender Equity through a continuous commitment to Girls and Women in Sports" This program is subject to cancellation. "PlayLA Youth and Adaptive Sports Program is made possible by the LA28 Olympic and Paralympic Games, allowing youth to participate for \$10. Waivers are available, ask for details.



# PISTA & CAMPO



**Comienza el registro**  
**3/04/24**

**Edades 8-15**

**\$10**  
**POR NIÑO**

**Todos los jueves**  
**4:00pm - 5:00pm**

**SESIÓN DE 10 SEMANAS**

**LAS CLASES COMIENZAN EL 8 DE ABRIL DE 2024**

**LA CLASE TERMINA EL 22 DE JUNIO DE 2024**



**DENKER REC CENTER**

**1550 W. 35TH PL**

**LOS ANGELES, CA 90018**

**(323) 733-8367**

SCAN QR  
CODE OR  
VISIT

[laparks.org/reccenter/denker](http://laparks.org/reccenter/denker)



Persons with disabilities are encouraged to participate in our classes and programs. Reasonable accommodations may be made with prior arrangement. "Achieving Gender Equity through a continuous commitment to Girls and Women in Sports" This program is subject to cancellation. "PlayLA Youth and Adaptive Sports Program is made possible by the LA28 Olympic and Paralympic Games, allowing youth to participate for \$10. Waivers are available, ask for details.





# JUDO

## 10 WEEK SESSION

### DENKER REC. CENTER

1550 W. 35TH PL. LA, CA 90018  
OFFICE: (323)733-8367



TUES & THURS

6:30P-8:30PM

**REGISTRATION:**

**3/04/24**

**\$10** PER CHILD



### CLASSES BEGIN APRIL 8TH, 2024

**AGES 5-12**

**AGES VARY BY SITE**

Persons with disabilities are encouraged to participate in our classes and programs. Reasonable accommodations may be made with prior arrangement. "Achieving Gender Equity through a continuous commitment to Girls and Women in Sports" This program is subject to cancellation. "PlayLA Youth and Adaptive Sports Program is made possible by the LA28 Olympic and Paralympic Games, allowing youth to participate for \$10. Waivers are available, ask for details.



VISIT US AT: [LAPARKS.ORG](http://LAPARKS.ORG)



# JUDO

## SESIÓN DE 10 SEMANAS

### DENKER REC. CENTER

1550 W. 35TH PL. LA, CA 90018  
OFFICE: (323)733-8367



MARTES Y JUEVES

6:30PM-8:30PM

**INSCRIPCION:**

**3/04/24**

**\$10** POR NINO



**LAS CLASES COMIENZAN  
8 DE ABRIL DE 2024**

**EDADES 5-12**

**LAS EDADES VARÍAN**

**SEGÚN EL SITIO**

Persons with disabilities are encouraged to participate in our classes and programs. Reasonable accommodations may be made with prior arrangement. "Achieving Gender Equity through a continuous commitment to Girls and Women in Sports" This program is subject to cancellation. "PlayLA Youth and Adaptive Sports Program is made possible by the LA28 Olympic and Paralympic Games, allowing youth to participate for \$10. Waivers are available, ask for details.



**VISIT US AT: LAPARKS.ORG**

# GPLA

Girls Play Los Angeles

# VOLLEYBALL



**REGISTRATION BEGINS**  
**2/3/2024**

**AGES**  
**9-15**  
yrs old

**FEE**  
**\$10**



## DIVISION

MINORS  
MAJORS  
JUNIORS

## AGES

9yr-10yr old  
11yr - 12yr old  
13yr - 15yr old

## TIME

6:30pm-7:30pm  
6:30pm-7:30pm  
7:30pm-8:30pm

## DENKER REC

1550 W. 35th Place  
Los Angeles, CA 90018  
Number: (323) 733-8367 |

Email: [Denker.RecreationCenter@lacity.org](mailto:Denker.RecreationCenter@lacity.org)



**LEAGUE STARTS:**  
**4/06/24**

**LEAGUE ENDS:**  
**6/08/24**

Persons with disabilities are encouraged to participate in our classes and programs. Reasonable accommodations may be made with prior arrangement. "Achieving Gender Equity through a continuous commitment to Girls and Women in Sports" This program is subject to cancellation.



# GPLA

Girls Play Los Angeles

# VÓLEIBOL



COMIENZA EL REGISTRO  
2/03/2024

EDADES

9-15

Hace años

FEE  
\$10

## DIVISIÓN

MENOR  
MAJORS  
JUNIORS

## AÑOS

De 9 a 10 años  
De 11 a 12 años  
De 13 a 15 años

## TIEMPO

6:30pm-7:30pm  
6:30pm-7:30pm  
7:30pm-8:30pm

## DENKER REC

1550 W. 35th Place  
Los Angeles, CA 90018  
Número: (323) 733-8367 |  
Correa Electronico:  
Denker.RecreationCenter@lacity.org



COMIENZA LA LIGA:  
4/06/24

LA LIGA TERMINA:  
06/08/24

Se anima a las personas con discapacidad a participar en nuestras clases y programas. Se pueden hacer ajustes razonables con arreglo previo. "Lograr la equidad de género a través de un compromiso continuo con las niñas y las mujeres en los deportes" Este programa está sujeto a cancelación.



# DENKER REC. CENTER



# Boxing



**Registration Starts**

**3/04/24**



**AGES 7-14**

**\$10**

**PER CHILD**

**10 WEEK SESSION**

**CLASSES BEGIN APRIL 8TH, 2024**

**CLASSES ENDS JUNE 22, 2024**

**\*NO CLASS MAY 27TH\***

**MONDAYS**

**5PM-6PM**

**DENKER REC CENTER**

**1550 W. 35TH PL.**

**LOS ANGELES, CA 90018**

**(323) 733-8367**



SCAN QR  
CODE OR  
VISIT

[laparks.org/reccenter/denker](http://laparks.org/reccenter/denker)

Persons with disabilities are encouraged to participate in our classes and programs. Reasonable accommodations may be made with prior arrangement. "Achieving Gender Equity through a continuous commitment to Girls and Women in Sports" This program is subject to cancellation. "PlayLA Youth and Adaptive Sports Program is made possible by the LA28 Olympic and Paralympic Games, allowing youth to participate for \$10. Waivers are available, ask for details.

CITY OF LOS ANGELES | DEPARTMENT OF RECREATION & PARKS

# DENKER REC. CENTER



# ECO-SPRING *Eggstravaganza*

Free food, Games, Prizes,  
Music, Egg Hunt, Jumpers  
+ Arts & Craft

FREE  
ENTRY

FREE  
PLANTS

## Saturday, March 23rd

10AM - 2:30PM

@DENKERRECREATIONCENTER



DENKER RECREATION CENTER



1550 W. 35th Pl., Los Angeles. CA 90018

Office: (323) 733-8367

Email: [Denker.RecreationCenter@lacity.org](mailto:Denker.RecreationCenter@lacity.org)

Persons with disabilities are encouraged to participate in our classes and programs. Reasonable accommodations may be made with prior arrangement. "Achieving Gender Equity through a continuous commitment to Girls and Women in Sports" This program is subject to cancellation.



CITY OF LOS ANGELES | DEPARTMENT OF RECREATION & PARKS

# DENKER REC. CENTER



# SPRING CAMP



Fee  
**\$70**

**MAR 26th - 29th**

Ages  
**5-12**

**\*PARTICIPANTS MUST BRING THEIR OWN LUNCH\***

**TUES - FRI 8:00AM - 6:00PM**

**SPORTS, GAMES, ARTS &  
CRAFTS + MUCH MORE**

**SNACKS  
PROVIDED**



**@DENKERRECREATIONCENTER**



**DENKER RECREATION CENTER**

**1550 W. 35TH PL., LOS ANGELES. CA 90018**

**OFFICE: (323)733-8367 | EMAIL:  
DENKER.RECREATIONCENTER@LACITY.ORG**

Persons with disabilities are encouraged to participate in our classes and programs. Reasonable accommodations may be made with prior arrangement. "Achieving Gender Equity through a continuous commitment to Girls and Women in Sports" This program is subject to cancellation.

# DENKER REC. CENTER



**REGISTRATION STARTS**

**2/03/2024**

# SOFT BALL

LEAGUE STARTS

**APRIL 6, 2024**

LEAGUE ENDS

**AUG 6, 2024**

FEE

**\$10**

GAME DAYS  
SATURDAYS

**TBA**



## DIVISION

MINOR  
MAJOR  
JUNIOR

## AGES

8-10  
11-12  
13-15

## GAME TIME

SATURDAYS - TBA  
SATURDAYS - TBA  
SATURDAYS - TBA

1550 W. 35th PL LA, CA 90018

Phone #: (323) 733-8367

Denker.RecreationCenter@LACity.org



SCAN QR  
CODE OR  
VISIT

Register  
here

[LAPARKS.ORG/RECCENTER/Denker](https://LAPARKS.ORG/RECCENTER/Denker)

**NO REFUNDS WILL BE GRANTED UNLESS PROGRAM IS CANCELED**

Persons with disabilities are encouraged to participate in our classes and programs. Reasonable accommodations may be made with prior arrangement. "Achieving Gender Equity through a continuous commitment to Girls and Women in Sports" This program is subject to cancellation.

"PlayLA Youth and Adaptive Sports Program is made possible by the LA28 Olympic and Paralympic Games, allowing youth to participate for \$10. Waivers are available, ask for details.

CITY OF LOS ANGELES | DEPARTMENT OF RECREATION & PARKS

# DENKER REC. CENTER

# DANCE



**REGISTRATION STARTS**

**3/04/2024**



**@DENKERRECREATIONCENTER**

**AGES 9-17**

**\$10**  
PER CHILD

**8 WEEK SESSION**

**FRIDAY**  
**6PM-7PM**

**CLASSES BEGIN APRIL 12TH, 2024**

**CLASSES ENDS MAY 31ST, 2024**

**DENKER REC CENTER**

1550 W. 35TH PL.

LOS ANGELES. CA 90018

(323) 733-8367



SCAN QR  
CODE OR  
VISIT

[laparks.org/reccenter/denker](http://laparks.org/reccenter/denker)



Persons with disabilities are encouraged to participate in our classes and programs. Reasonable accommodations may be made with prior arrangement. "Achieving Gender Equity through a continuous commitment to Girls and Women in Sports" This program is subject to cancellation. "PlayLA Youth and Adaptive Sports Program is made possible by the LA28 Olympic and Paralympic Games, allowing youth to participate for \$10. Waivers are available, ask for details.



# DENKER REC. CENTER



# SOCCER

## Training

**\$10**

PER PERSON

YOUTH AGE

**9-13**

**APR 9 - MAY 28TH**

@DENKERRECREATIONCENTER

**TUESDAYS**

**5PM - 6PM**

**DENKER REC**

1550 W. 35TH PL.  
LOS ANGELES, CA 90018

(323) 733-8367



SCAN QR  
CODE OR  
VISIT

[laparks.org/reccenter/denker](https://laparks.org/reccenter/denker)

Persons with disabilities are encouraged to participate in our classes and programs. Reasonable accommodations may be made with prior arrangement. "Achieving Gender Equity through a continuous commitment to Girls and Women in Sports" This program is subject to cancellation.

"PlayLA Youth and Adaptive Sports Program is made possible by the LA28 Olympic and Paralympic Games, allowing youth to participate for \$10. Waivers are available, ask for details.