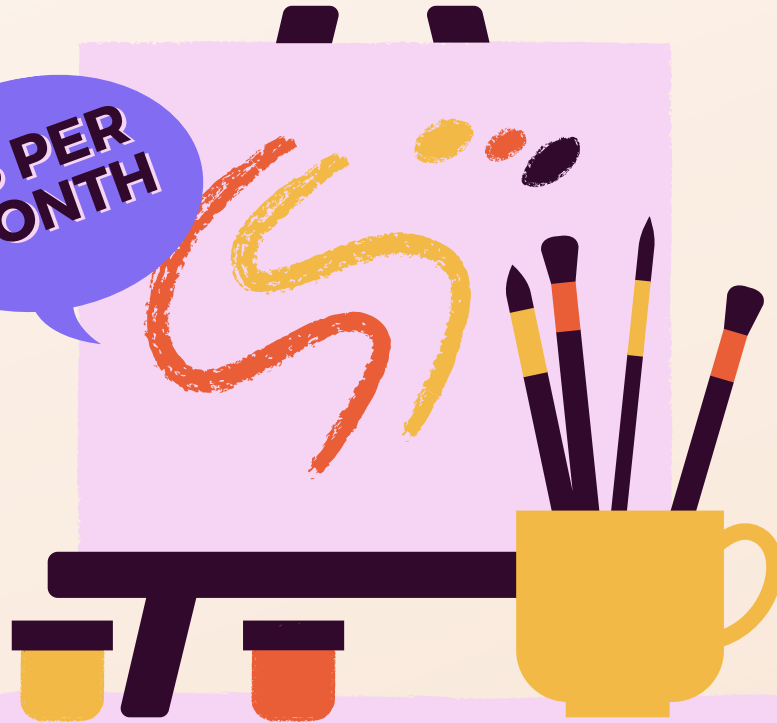


**GLASSELL SENIOR CENTER**  
3750 VERDUGO RD. LOS ANGELES, CA 90065  
PHONE # 323-550-8809



# SENIOR ART CLASS

**\$5 PER  
MONTH**



**TUESDAYS 11AM-1:30PM**  
**DRAWING AND WATERCOLOR**

FULL REFUNDS WILL NOT BE GIVEN UNLESS CLASS IS CANCELLED BY THE CENTER.  
A 15% ADMINISTRATIVE FEE WILL BE ADDED TO ALL REFUNDS.  
PROGRAMMING SUBJECT TO CHANGE OR CANCELLATION WITHOUT NOTICE.  
PERSONS WITH DISABILITIES ARE WELCOME TO PARTICIPATE IN OUR PROGRAMS.  
REASONABLE ACCOMMODATIONS WILL BE MADE WITH PRIOR ARRANGEMENT.

