

CITY OF LOS ANGELES \* DEPARTMENT OF RECREATION AND PARKS

## HOLLENBECK RECREATION CENTER

415 South St. Louis Street., LA, CA 90033 Phone: (323) 261-0113

Email: [hollenbeck.recreationcenter@lacity.org](mailto:hollenbeck.recreationcenter@lacity.org)

Website: [www.laparks.org](http://www.laparks.org)



# HOLLENBECK RC

# LIL'TUMBLERS

Class Starts: Jan 10, 2024

Days : Wednesdays

Ages : 4-6 years old

Cost : \$ 10.00 Per Session (8wks)

Time : 3pm-4pm

Instructor: Omar Morgan

**REGISTER NOW!**

For more information, call (323)261-0113

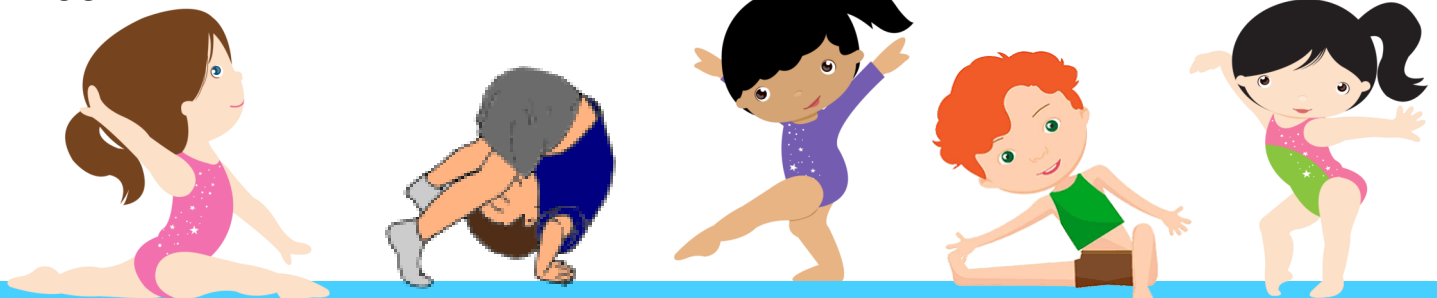


SCAN ME



FOLLOW US

HOLLENBECKRC\_



**PAYMENT:** Cash, check, money order or credit card (VISA or MasterCard only) accepted. Please make checks payable to: City of Los Angeles. Please have the exact amount when paying with cash. A collection fee will be charged for each returned check. *Hollenbeck Recreation Center reserves the right to cancel, change, or substitute programs or activities as listed in this flyer when necessary.* Full refunds are only given if Hollenbeck Recreation Center cancels a class or program. There will be **NO REFUNDS** after the program has begun unless a class or sports league is changed or cancelled by the recreation center. Persons with disabilities are welcome to participate in our programs. Reasonable accommodations will be made with 30 days prior arrangements. Achieving equity through a continuous commitment to girls and women in sports.

CITY OF LOS ANGELES \* DEPARTMENT OF RECREATION AND PARKS

## HOLLENBECK RECREATION CENTER

415 South St. Louis Street., LA, CA 90033 Phone: (323) 261-0113

Email: [hollenbeck.recreationcenter@lacity.org](mailto:hollenbeck.recreationcenter@lacity.org)

Website: [www.laparks.org](http://www.laparks.org)



# HOLLENBECK RC

# LIL'TUMBLERS

Clase Comienza: 10 de Enero, 2024

Días: Miercoles

Edades: 4-6 years años

Costo : \$ 10.00 Por Sesión (8 semanas)

Tiempo/ hora : 3pm-4pm

Instructor: Omar Morgan

**¡REGÍSTRATE AHORA!**

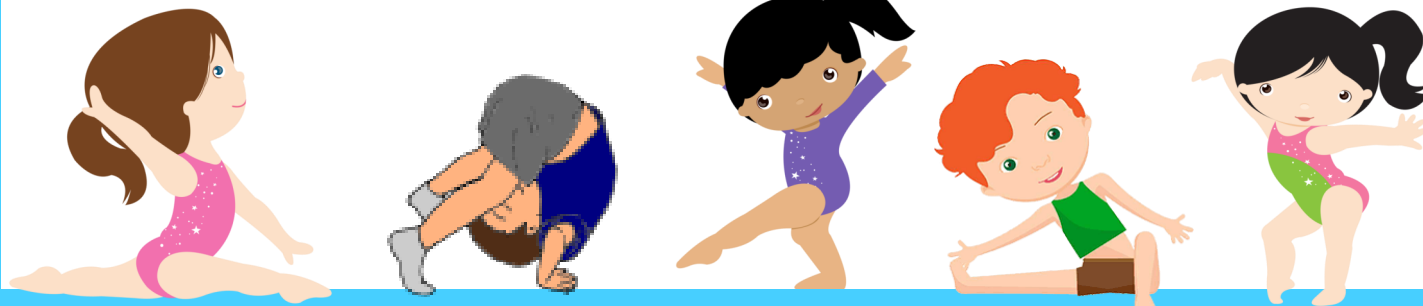
Para mas informacion, llamar al (323) 261-0113

Escanéarme



FOLLOW US

HOLLENBECKRC\_



**PAYMENT:** Cash, check, money order or credit card (VISA or MasterCard only) accepted. Please make checks payable to: City of Los Angeles. Please have the exact amount when paying with cash. A collection fee will be charged for each returned check. *Hollenbeck Recreation Center reserves the right to cancel, change, or substitute programs or activities as listed in this flyer when necessary.* Full refunds are only given if Hollenbeck Recreation Center cancels a class or program. There will be **NO REFUNDS** after the program has begun unless a class or sports league is changed or cancelled by the recreation center. Persons with disabilities are welcome to participate in our programs. Reasonable accommodations will be made with 30 days prior arrangements. Achieving equity through a continuous commitment to girls and women in sports.