



CITY OF LOS ANGELES DEPARTMENT OF RECREATION AND PARKS

# OAKWOOD RECREATION CENTER



767 CALIFORNIA AVE, / VENICE CA, 90291 / 310-452-7479  
OAKWOOD.RECREATIONCENTER@LACITY.ORG

# WELCOME ME SPRING 2024



CLASSES BEGIN THE WEEK  
OF APRIL 8TH



All programs are subject to change or cancellation.

Persons with disabilities are welcomed to participate in our classes and programs.

Reasonable accommodations will be made with prior arrangements. Please be aware that some accommodations may take 30 days or longer.

Please submit your request for an accommodation as soon as possible.

Refund policy:

A 15% administrative fee will be assessed by the City of Los Angeles Department of Recreation and Parks for any patron granted a refund.

No refunds or credits for missed days.



CITY OF LOS ANGELES DEPARTMENT OF RECREATION & PARKS

# OAKWOOD RECREATION CENTER



767 CALIFORNIA AVE, / VENICE CA, 90291 / 310-452-7479  
OAKWOOD.RECREATIONCENTER@LACITY.ORG

**\$100**  
**per month**

One time  
registration fee  
of \$25

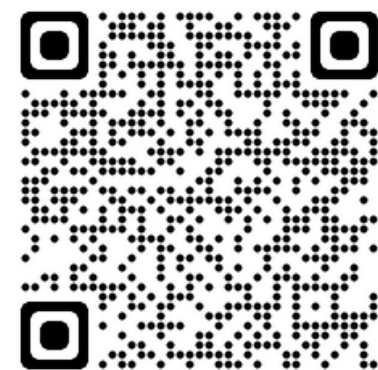
Limited \*Scholarships  
are Available\*

## OAKWOOD'S

# AFTER SCHOOL CLUB

\*\*Aqui se habla  
Español\*\*  
Llama para mas  
informacion

REGISTER NOW!



@laparks.org

COME JOIN THE CLUB!

**August 14th- June 7th**  
**Ages: K-5th grade**      **Time: 3-6pm**

- ✓ Homework Help
- ✓ Local School Pick-up
- ✓ Help with Reading
- ✓ Snack Provided

\*\*Tuesday early pick-up included.\*\*

Pick-ups from...

- ✓ Broadway
- ✓ Beethoven
- ✓ Coeur D'alene
- ✓ Westminster

**"BUILDING  
FRIENDSHIPS,  
CREATING  
EXPERIENCES!"**

All programs are subject to change or cancellation.

Persons with disabilities are welcomed to participate in our classes and programs.

Reasonable accommodations will be made with prior arrangements. Please be aware that some accommodations may take 30 days or longer. Please submit your request for an accommodation as soon as possible.

Refund policy:

A 15% administrative fee will be assessed by the City of Los Angeles Department of Recreation and Parks for any patron granted a refund. No refunds or credits for missed days.

CITY OF LOS ANGELES DEPARTMENT OF RECREATION AND PARKS



# OAKWOOD RECREATION CENTER

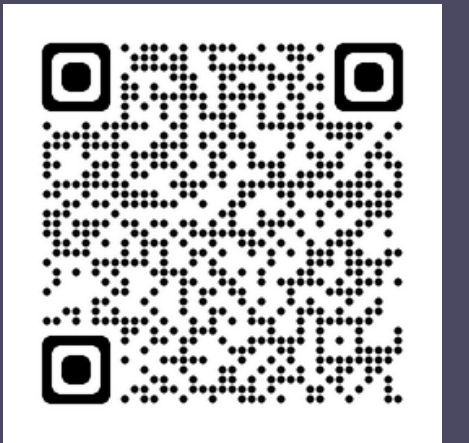


767 CALIFORNIA AVE, / VENICE CA, 90291 / 310-452-7479  
OAKWOOD.RECREATIONCENTER@LACITY.ORG

## Kiddly Krafts

REGISTER NOW!

@laparks.org



WHEN: TUESDAY'S

TIME: 10:30AM-11:15AM

AGES: 2-4

DATES: 4/9-5/28

FEE: \$50 FOR 8 WEEKS

\*\*Adult is required to stay during the class\*\*.



This fun class will teach children how to follow steps, work on fine motor skills and learn about shapes, colors, numbers and letters



All programs are subject to change or cancellation.

Persons with disabilities are welcomed to participate in our classes and programs.

Reasonable accommodations will be made with prior arrangements. Please be aware that some accommodations may take 30 days or longer. Please submit your request for an accommodation as soon as possible.

Refund policy:

A 15% administrative fee will be assessed by the City of Los Angeles Department of Recreation and Parks for any patron granted a refund.

No refunds or credits for missed days.



CITY OF LOS ANGELES DEPARTMENT OF RECREATION AND PARKS

# OAKWOOD RECREATION CENTER



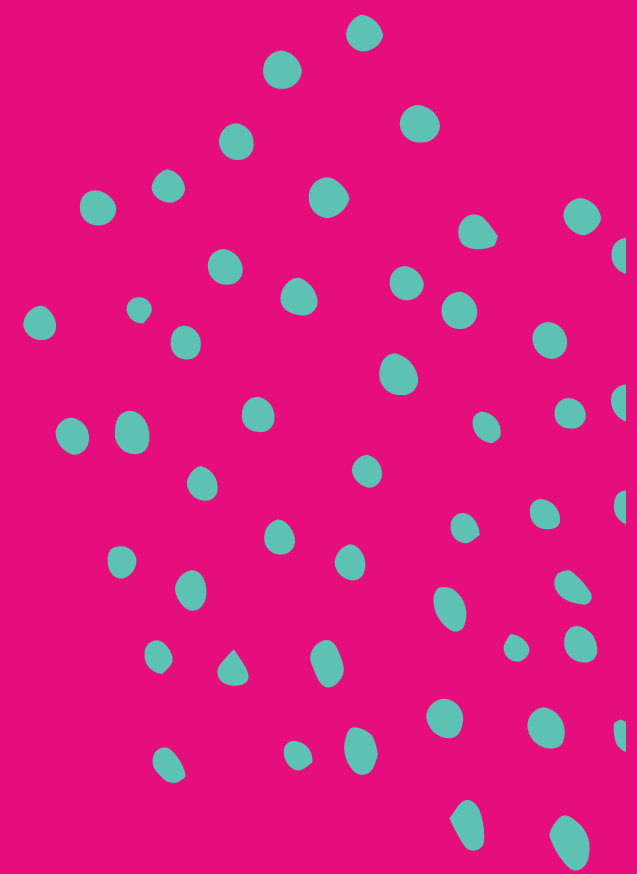
767 CALIFORNIA AVE, / VENICE CA, 90291 / 310-452-7479  
OAKWOOD.RECREATIONCENTER@LACITY.ORG

TINY TYKES

# Cooking Class



**IN THIS CLASS, PARENTS AND CHILDREN WILL LEARN HOW TO PREPARE FOODS & HOW TO COOK TOGETHER!**



**WHEN: FRIDAYS**

**TIME: 10:30AM-11:15AM**

**AGES: 2-5**

**DATES: 4/12-5/31**

**FEE: \$50 FOR 8 WEEKS**

**\*\*Adult is required to stay during the class\*\*.**



All programs are subject to change or cancellation.

Persons with disabilities are welcomed to participate in our classes and programs.

Reasonable accommodations will be made with prior arrangements. Please be aware that some accommodations may take 30 days or longer. Please submit your request for an accommodation as soon as possible.

Refund policy:

A 15% administrative fee will be assessed by the City of Los Angeles Department of Recreation and Parks for any patron granted a refund.

No refunds or credits for missed days.



CITY OF LOS ANGELES DEPARTMENT OF RECREATION AND PARKS

# OAKWOOD RECREATION CENTER



767 CALIFORNIA AVE, / VENICE CA, 90291 / 310-452-7479  
OAKWOOD.RECREATIONCENTER@LACITY.ORG



## TINY TYKES

# RUN, SKIP, JUMP

# PLAYTIME



COME ON IN AND STOP BY TO HAVE SOME STRUCTURED FREE TIME. WE'LL OFFER A WIDE RANGE OF FUN PLAYTIME FAVORITES FOR THE LITTLE ONE TO GO CRAZY WITH.



**WHEN: THURSDAY**

**TIME: 10:30AM-11:15AM**

**AGES: 2-5**

**DATES: 4/11-5/30**

**FEE: \$50 FOR 8 WEEKS**

**\*\*Adult is required to stay during the class\*\*.**

**Drop-ins are welcome!!!**



All programs are subject to change or cancellation.

Persons with disabilities are welcomed to participate in our classes and programs.

Reasonable accommodations will be made with prior arrangements. Please be aware that some accommodations may take 30 days or longer. Please submit your request for an accommodation as soon as possible.

PlayLA Youth and Adaptive Youth Sports Program is made possible by the LA28 Olympic and Paralympic Games. Waivers available for those who qualify, ask for details.

Refund policy:

A 15% administrative fee will be assessed by the City of Los Angeles Department of Recreation and Parks for any patron granted a refund. No refunds or credits for missed days.



CITY OF LOS ANGELES DEPARTMENT OF RECREATION AND PARKS

# OAKWOOD RECREATION CENTER



767 CALIFORNIA AVE, / VENICE CA, 90291 / 310-452-7479  
OAKWOOD.RECREATIONCENTER@LACITY.ORG



# LEGO Building

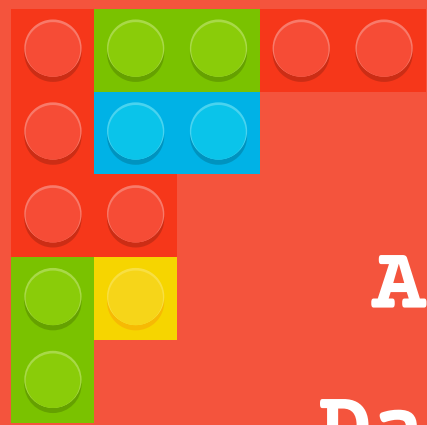
# Club



Show your creativity as you build your favorite creations!!! Each week will offer free play (with project ideas) and a show & tell at the end.

**REGISTER NOW!**

@laparks.org



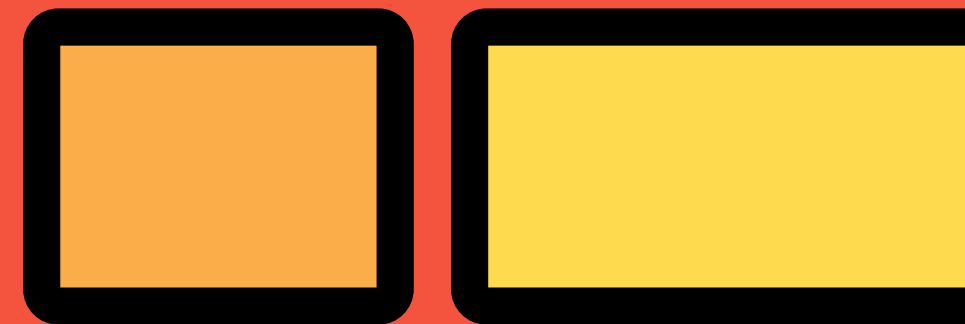
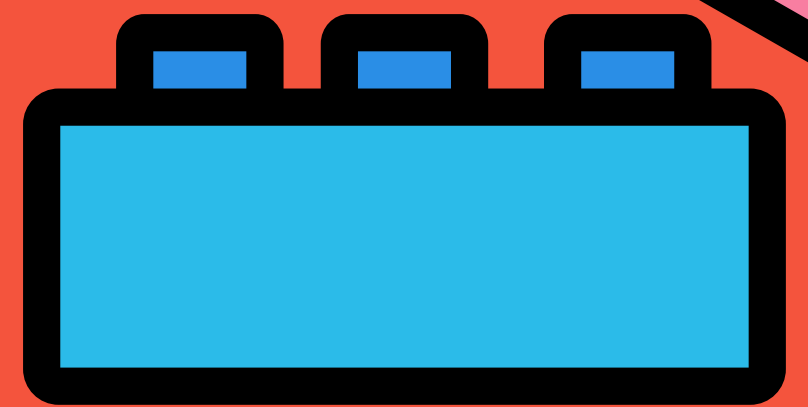
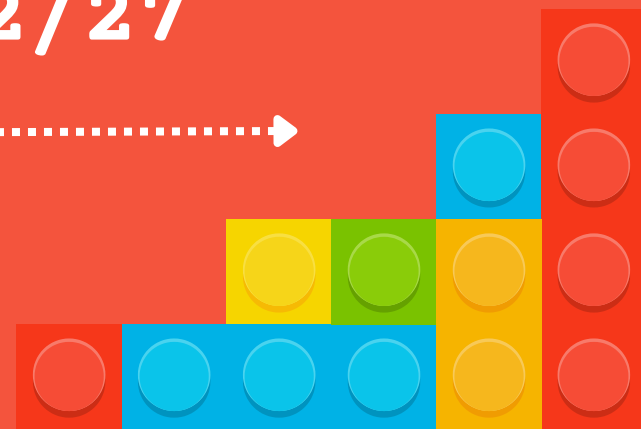
**Ages: 5-9**

**Day: Monday**

**Times: 4:00pm-4:45pm**

**FEES: \$50/8 weeks**

**Dates: 1/9-2/27**



All programs are subject to change or cancellation.  
Persons with disabilities are welcomed to participate in our classes and programs.  
Reasonable accommodations will be made with prior arrangements. Please be aware that some accommodations may take 30 days or longer. Please submit your request for an accommodation as soon as possible.

Refund policy:

A 15% administrative fee will be assessed by the City of Los Angeles Department of Recreation and Parks for any patron granted a refund.  
No refunds or credits for missed days.

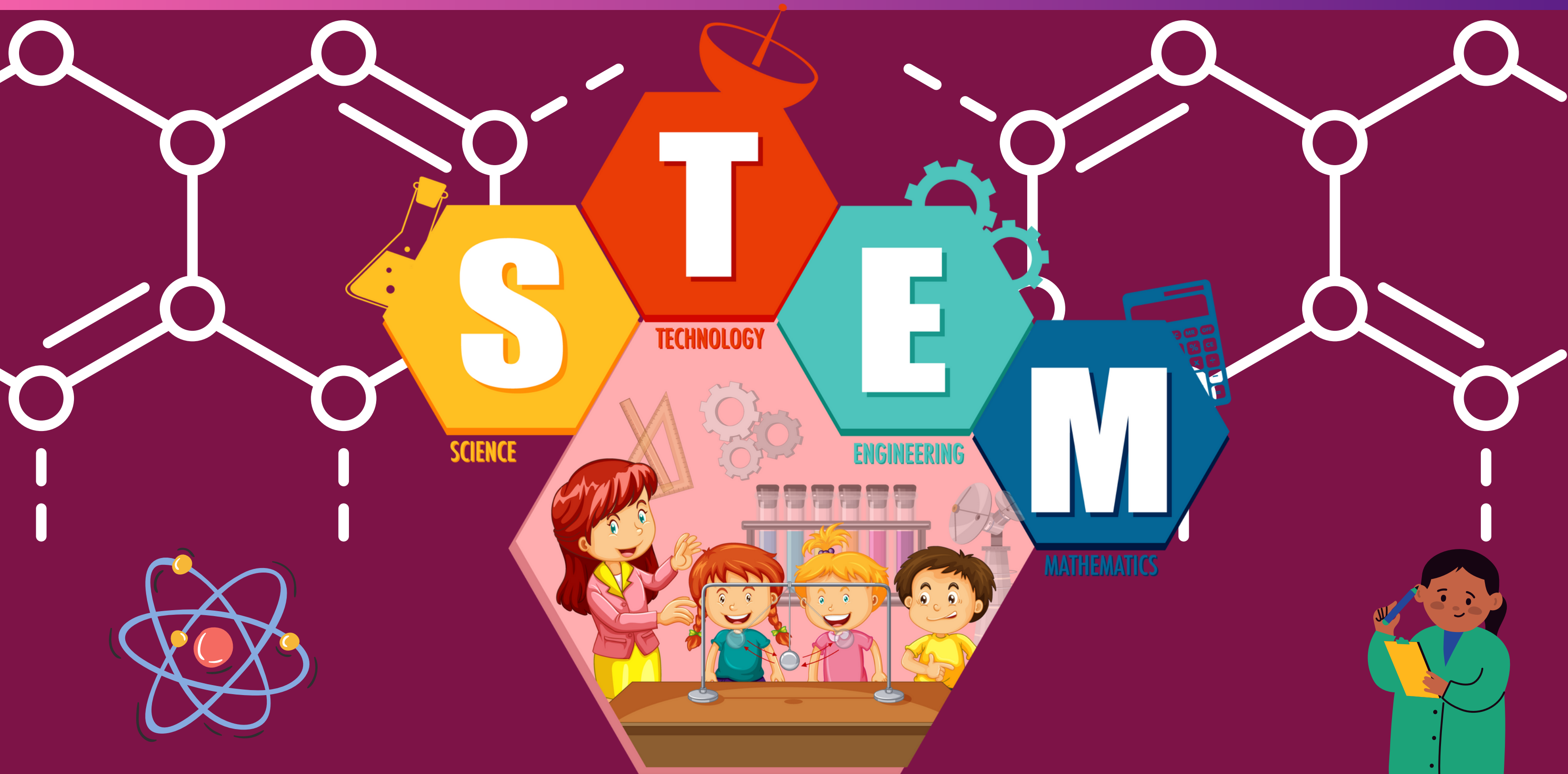


CITY OF LOS ANGELES DEPARTMENT OF RECREATION AND PARKS

# OAKWOOD RECREATION CENTER



767 CALIFORNIA AVE, / VENICE CA, 90291 / 310-452-7479  
OAKWOOD.RECREATIONCENTER@LACITY.ORG



Introducing kids to think creatively, collaborate, and solve problems through a hands on experience.

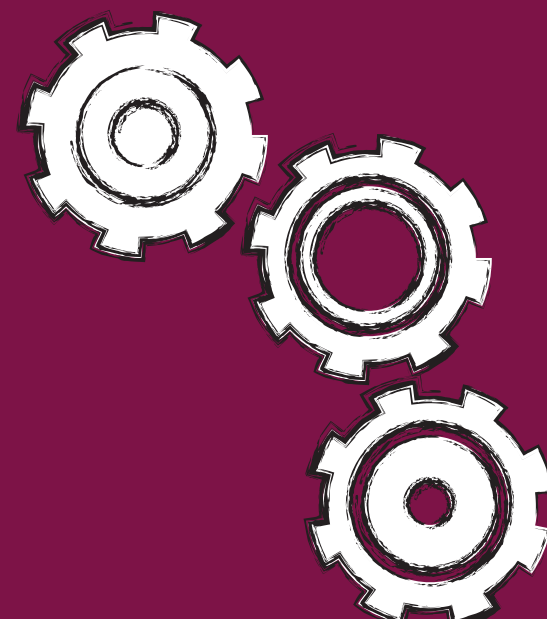
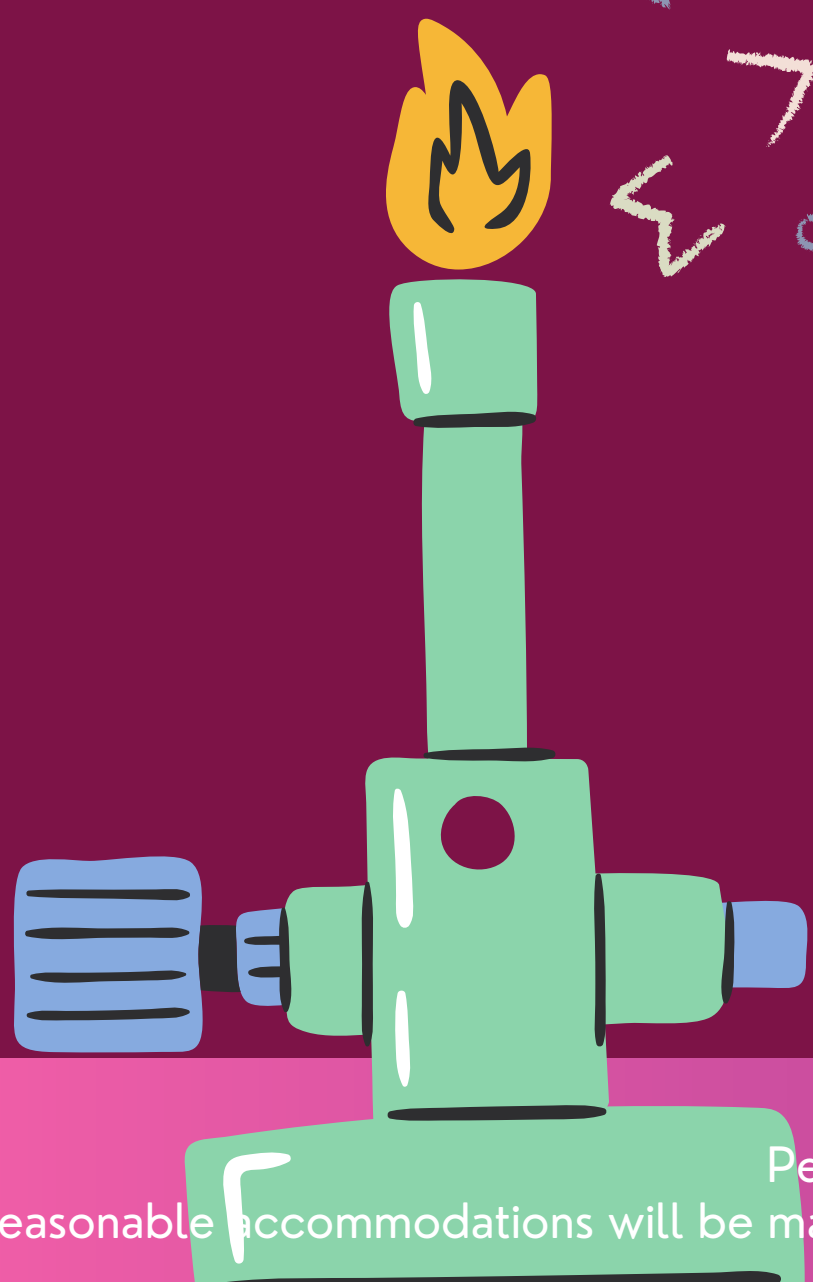
Ages:  
5-10

Days/Time:  
Thursdays  
4:00pm-4:45pm

Fees:  
\$50 for 8 weeks

Class runs from:  
4/11-5/30

Register Now  
[@laparks.org](http://laparks.org)



All programs are subject to change or cancellation.  
Persons with disabilities are welcomed to participate in our classes and programs.  
Reasonable accommodations will be made with prior arrangements. Please be aware that some accommodations may take 30 days or longer. Please submit your request for an accommodation as soon as possible.

Refund policy:

A 15% administrative fee will be assessed by the City of Los Angeles Department of Recreation and Parks for any patron granted a refund.  
No refunds or credits for missed days.

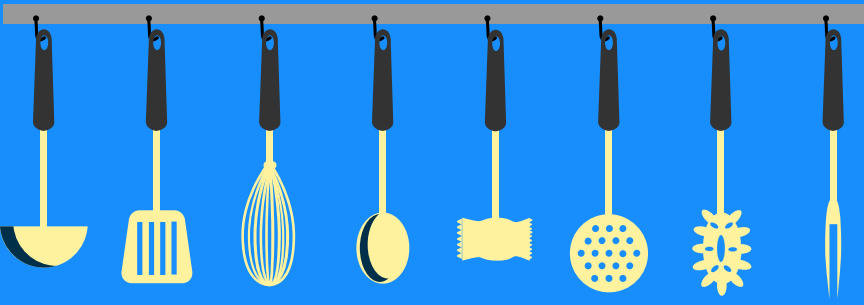


CITY OF LOS ANGELES DEPARTMENT OF RECREATION AND PARKS

# OAKWOOD RECREATION CENTER



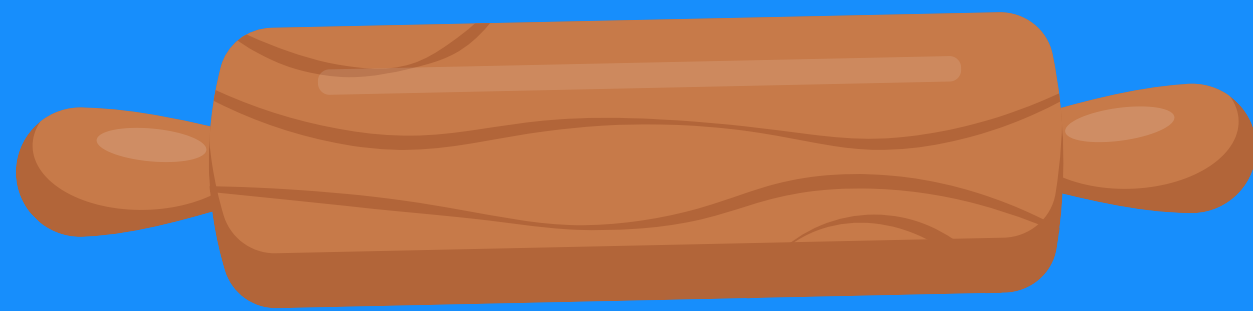
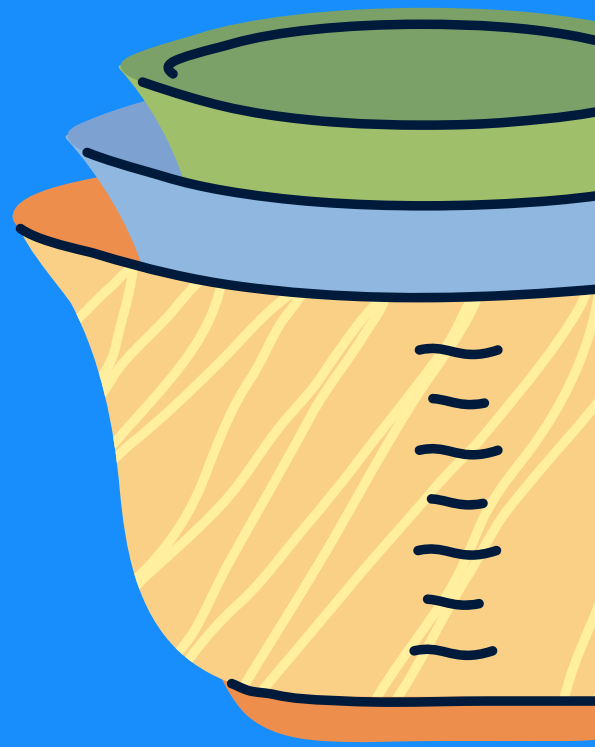
767 CALIFORNIA AVE, / VENICE CA, 90291 / 310-452-7479  
OAKWOOD.RECREATIONCENTER@LACITY.ORG



## LITTLE CHEFS Cooking Class



IN THIS COOKING CLASS, KIDS WILL  
LEARN HOW TO PREPARE THE  
KITCHEN, READ RECIPES, GET  
INGREDIENTS READY, AND ENHANCE  
THEIR COOKING SKILLS



WHEN: TUESDAYS  
TIME: 4:00PM-5:00PM  
AGES: 5-12  
DATES: 4/9-5/28  
FEE: \$50 FOR 8 WEEKS



All programs are subject to change or cancellation.  
Persons with disabilities are welcomed to participate in our classes and programs.  
Reasonable accommodations will be made with prior arrangements. Please be aware that some accommodations may take 30 days or longer. Please submit your request for an accommodation as soon as possible.

Refund policy:

A 15% administrative fee will be assessed by the City of Los Angeles Department of Recreation and Parks for any patron granted a refund.  
No refunds or credits for missed days.





CITY OF LOS ANGELES DEPARTMENT OF RECREATION AND PARKS

# OAKWOOD RECREATION CENTER



767 CALIFORNIA AVE, / VENICE CA, 90291 / 310-452-7479  
OAKWOOD.RECREATIONCENTER@LACITY.ORG



# CO-ED FLAG FOOTBALL

# CLINICS!



Ages: 5-9

Time : 4:00pm-4:45pm

Day: Wednesday

Fee: \$50

Dates: 4/10-5/29



**REGISTER NOW!**  
[@laparks.org](https://www.laparks.org)

All programs are subject to change or cancellation.

Persons with disabilities are welcomed to participate in our classes and programs. Reasonable accommodations will be made with prior arrangements.

Please be aware that some accommodations may take 30 days or longer. Please submit your request for an accommodation as soon as possible.

Achieving gender equity through a continuous commitment to girls and women in sports.

PlayLA Youth and Adaptive Youth Sports Program is made possible by the LA28 Olympic and Paralympic Games. Waivers available for those who qualify, ask for details.

Refund policy:

A 15% administrative fee will be assessed by the City of Los Angeles Department of Recreation and Parks for any patron granted a refund. No refunds or credits for missed days.



CITY OF LOS ANGELES DEPARTMENT OF RECREATION AND PARKS

# OAKWOOD RECREATION CENTER



767 CALIFORNIA AVE, / VENICE CA, 90291 / 310-452-7479  
OAKWOOD.RECREATIONCENTER@LACITY.ORG



3

**GIRLS ONLY**



# FLAG

4

# FOOTBALL

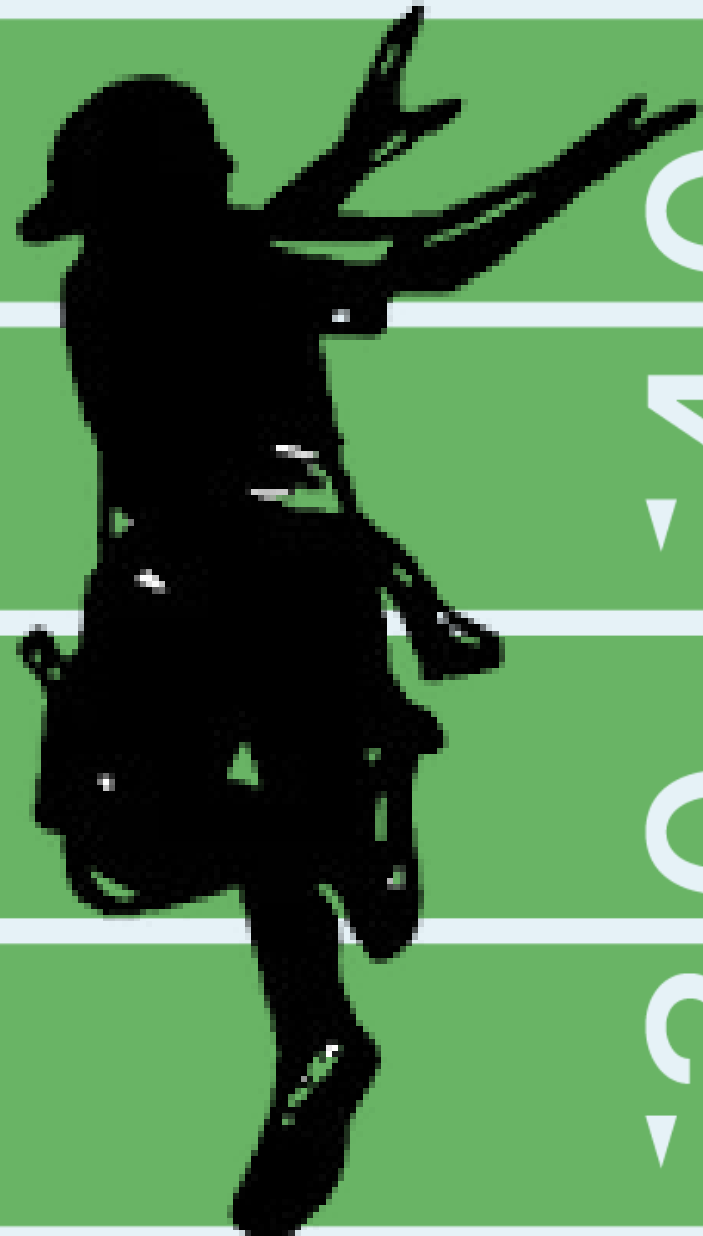
# CLINICS!

5



5

4



4

3

3

**Ages: 5-9**

**Time : 4:45pm-5:45pm**

**Day: Wednesday**

**Fee: \$10**

**Dates: 4/10-5/29**



**REGISTER NOW!**

**@laparks.org**

All programs are subject to change or cancellation.

Persons with disabilities are welcomed to participate in our classes and programs. Reasonable accommodations will be made with prior arrangements.

Please be aware that some accommodations may take 30 days or longer. Please submit your request for an accommodation as soon as possible.

Achieving gender equity through a continuous commitment to girls and women in sports.

PlayLA Youth and Adaptive Youth Sports Program is made possible by the LA28 Olympic and Paralympic Games. Waivers available for those who qualify, ask for details.

Refund policy:

A 15% administrative fee will be assessed by the City of Los Angeles Department of Recreation and Parks for any patron granted a refund. No refunds or credits for missed days.



CITY OF LOS ANGELES DEPARTMENT OF RECREATION AND PARKS

# OAKWOOD RECREATION CENTER

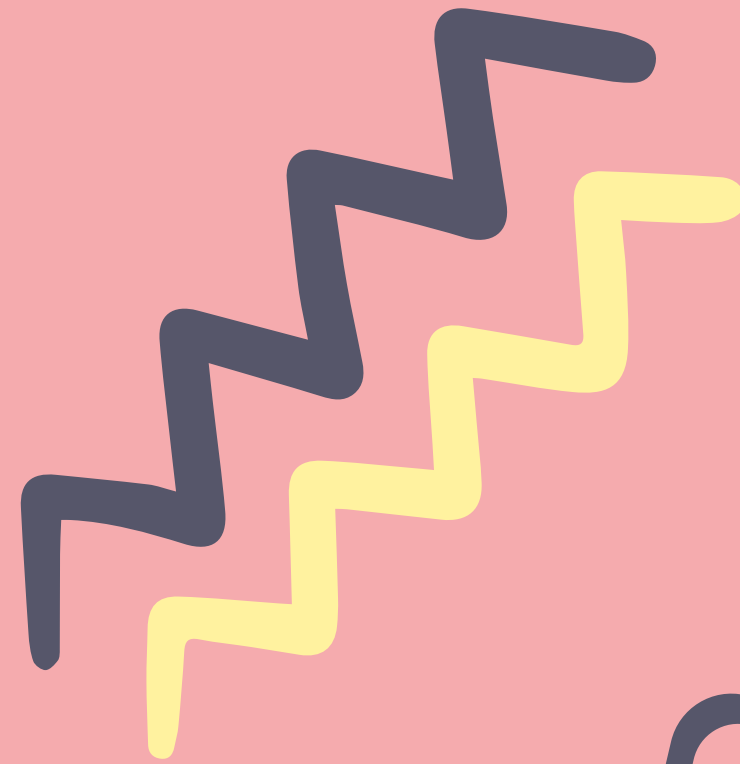


767 CALIFORNIA AVE, / VENICE CA, 90291 / 310-452-7479  
OAKWOOD.RECREATIONCENTER@LACITY.ORG



## Are you ready?

# LET'S CHEER! LETS DANCE!



Cheer

Time : 5pm-6pm

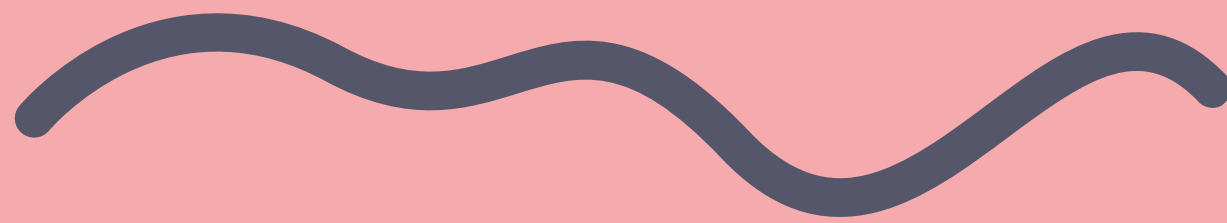
Day: Wednesday

Fee: \$10

Dates: 4/10-5/29



Sign up and learn to cheer for your school teams,  
or just because you love it!



Dance

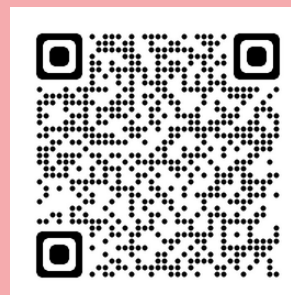
Time : 5pm-6pm

Day: Friday

Fee: \$10

Dates: 4/12-5/31

Learn new cheer stunts and drills!



**REGISTER NOW!**  
[@laparks.org](https://laparks.org)



All programs are subject to change or cancellation.  
Persons with disabilities are welcomed to participate in our classes and programs. Reasonable accommodations will be made with prior arrangements.  
Please be aware that some accommodations may take 30 days or longer. Please submit your request for an accommodation as soon as possible.  
Achieving gender equity through a continuous commitment to girls and women in sports.

Refund policy:

A 15% administrative fee will be assessed by the City of Los Angeles Department of Recreation and Parks for any patron granted a refund. No refunds or credits for missed days.



CITY OF LOS ANGELES DEPARTMENT OF RECREATION AND PARKS

# OAKWOOD RECREATION CENTER



767 CALIFORNIA AVE, / VENICE CA, 90291 / 310-452-7479  
OAKWOOD.RECREATIONCENTER@LACITY.ORG

**GPLA**  
Girls Play Los Angeles

# VOLLEYBALL CLINICS

Monday Classes:  
4/8-6/3  
Wednesday Classes:  
4/10-5/29

Classes will run  
for 8 weeks

**AGES: 6-15**

**DATE / TIME:**  
**MONDAYS: 6PM - 7PM**  
**DATES: 4/8-6/3**

**FEE: \$10**

**WEDNESDAYS: 6PM - 7PM**  
**DATES: 4/10-5/29**

**FEE: \$10**



**REGISTER HERE**



All programs are subject to change or cancellation.  
Persons with disabilities are welcomed to participate in our classes and programs. Reasonable accommodations will be made with prior arrangements.  
Please be aware that some accommodations may take 30 days or longer. Please submit your request for an accommodation as soon as possible.  
Achieving gender equity through a continuous commitment to girls and women in sports.

Refund policy:

A 15% administrative fee will be assessed by the City of Los Angeles Department of Recreation and Parks for any patron granted a refund. No refunds or credits for missed days.



CITY OF LOS ANGELES DEPARTMENT OF RECREATION AND PARKS

# OAKWOOD RECREATION CENTER



767 CALIFORNIA AVE, / VENICE CA, 90291 / 310-452-7479  
OAKWOOD.RECREATIONCENTER@LACITY.ORG

# PLAY LA

# JUDO

DAY: THURSDAYS

TIME: 5 PM - 6 PM

AGES: 5 - 15

FEE: \$10

***AN EXCELLENT BEGINNERS CLASS  
THAT TEACHES BASIC JUDO  
TECHNIQUES & IMPROVES SELF  
CONFIDENCE***

**8 WEEK SESSION  
Classes Begin 4/11**



All programs are subject to change or cancellation. Persons with disabilities are welcomed to participate in our classes and programs. Reasonable accommodations will be made with prior arrangements. Please be aware that some accommodations may take 30 days or longer.

Please submit your request for an accommodation as soon as possible.

Achieving gender equity through a continuous commitment to girls and women in sports.

Refund policy:

A 15% administrative fee will be assessed by the City of Los Angeles Department of Recreation and Parks for any patron granted a refund. No refunds or credits for missed days.

CITY OF LOS ANGELES DEPARTMENT OF RECREATION & PARKS



# Oakwood Recreation Center

767 California Ave, Venice CA, 90291

310-452-7479

[oakwood.recreationcenter@lacity.org](mailto:oakwood.recreationcenter@lacity.org)

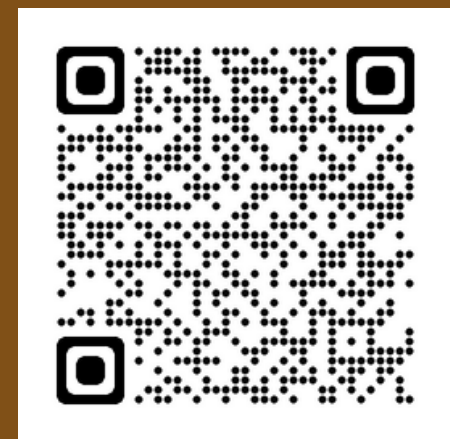


# CO-ED BASEBALL



REGISTER NOW!

[@laparks.org](https://www.laparks.org)



**REGISTRATION ONLY \$60**

League runs from:

4/6-5/25

Practices start:

Week of March 26th

<u>SPORT</u>	<u>DIVISION</u>	<u>YEAR BORN</u>	<u>GAME DAY</u>	<u>PRACTICE DAY</u>	<u>SEE</u>
CO-ED BASEBALL	T-BALL	2017-2018	SATURDAY	TBD	\$60
CO-ED BASEBALL	5-PITCH	2015-2016	SATURDAY	TBD	\$60

## COME JOIN US!

All programs are subject to change or cancellation.

Persons with disabilities are welcomed to participate in our classes and programs. Reasonable accommodations will be made with prior arrangements.

Please be aware that some accommodations may take 30 days or longer. Please submit your request for an accommodation as soon as possible.

Achieving gender equity through a continuous commitment to girls and women in sports.

PlayLA Youth and Adaptive Youth Sports Program is made possible by the LA28 Olympic and Paralympic Games. Waivers available for those who qualify, ask for details.

Refund policy:

A 15% administrative fee will be assessed by the City of Los Angeles Department of Recreation and Parks for any patron granted a refund.

No refunds or credits for missed days.

CITY OF LOS ANGELES DEPARTMENT OF RECREATION & PARKS

Oakwood Recreation Center



767 California Ave, Venice CA, 90291

310-452-7479

[oakwood.recreationcenter@lacity.org](mailto:oakwood.recreationcenter@lacity.org)



# GPLA

Girls Play Los Angeles

# SOFTBALL

REGISTER NOW!  
@laparks.org



League runs from:  
4/6-5/25  
Practices start:  
Week of March 26th

**GPLA SOFTBAL ONLY \$10**

<u>SPORT</u>	<u>DIVISION</u>	<u>YEAR BORN</u>	<u>GAME DAY</u>	<u>PRACTICE DAY</u>	<u>FEE</u>
GPLA SOFTBALL	T-BALL	2017-2018	SATURDAY	TBD	\$10
GPLA SOFTBALL	5-PITCH	2015-2016	SATURDAY	TBD	\$10
GPLA SOFTBALL	MINORS	2013-2014	SATURDAY	TBD	\$10
GPLA SOFTBALL	MAJORS	2011-2012	SATURDAY	TBD	\$10

**COME JOIN US!**

All programs are subject to change or cancellation.  
Persons with disabilities are welcomed to participate in our classes and programs. Reasonable accommodations will be made with prior arrangements. Please be aware that some accommodations may take 30 days or longer. Please submit your request for an accommodation as soon as possible.  
Achieving gender equity through a continuous commitment to girls and women in sports.

Refund policy:

A 15% administrative fee will be assessed by the City of Los Angeles Department of Recreation and Parks for any patron granted a refund.  
No refunds or credits for missed days.

Don't forget about these other fun and exciting programs, classes and events...

**KAREN BASS - MAYOR**

**TRACI PARK - COUNCIL MEMBER, DISTRICT #11**

**RECREATION AND PARKS COMMISSIONERS**

**RENATA SIMRIL - PRESIDENT**

**LUIS SANCHEZ - VICE PRESIDENT**

**FIONA HUTTON, MARIE LLOYD, BENNY TRAN - MEMBERS**

**RECREATION AND PARKS EXECUTIVE STAFF**

**JIMMY KIM - GENERAL MANAGER**

**MATTHEW RUDNICK - EXECUTIVE OFFICER**

**BELINDA JACKSON - ASSISTANT GENERAL MANAGER**

**SONYA YOUNG JIMENEZ - SUPERINTENDENT, VENICE BEACH & WEST REGION**

**RAMON CERRILLOS - PRINCIPAL RECREATION SUPERVISOR II**

**JUAN SOTO, PRINCIPAL RECREATION SUPERVISOR I**

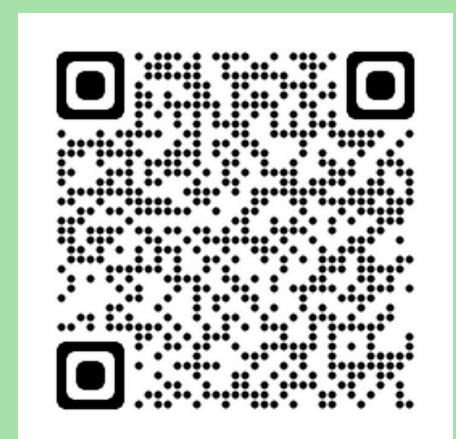
**LESLIE RICHTER - RECREATION SUPERVISOR, VIEWPOINT DISTRICT**

**JOHN GAVILAN - FACILITY DIRECTOR**

**JOHN PAUL SEDILLO - RECREATION COORDINATOR**



Register @ [laparks.org](http://laparks.org)



All programs are subject to change or cancellation.

Persons with disabilities are welcomed to participate in our classes and programs.

Reasonable accommodations will be made with prior arrangements.

Please be aware that some accommodations may take 30 days or longer.

Please submit your request for an accommodation as soon as possible.

Achieving gender equity through a continuous commitment to girls and women in sports.

PlayLA Youth and Adaptive Youth Sports Program is made possible by the LA28 Olympic and Paralympic Games. Waivers available for those who qualify, ask for details.

Refund policy:

A 15% administrative fee will be assessed by the City of Los Angeles Department of Recreation and Parks for any patron granted a refund. No refunds or credits for missed days.