

## MEETING AGENDA

### CITY OF LOS ANGELES DEPARTMENT OF RECREATION AND PARKS FACILITY REPAIR AND MAINTENANCE COMMISSION TASK FORCE

Thursday, February 1, 2024 at 10:00 A.M.  
or soon thereafter as the Board of Recreation and Park Commissioners  
adjourns its Regular Meeting noticed for 9:00 A.M.

Westchester Recreation Center  
7000 W Manchester Ave, Los Angeles, 90045

**Please Note: Public Comment Will be Taken In-Person Only**

To listen to the meeting via Teleconference,  
Use this link: <https://us02web.zoom.us/j/87416494098>

Or Dial (669) 900-6833 to Join the Meeting  
Then Enter this Webinar ID: 874 1649 4098 AND PRESS #

---

LUIS SANCHEZ, CHAIR  
MARIE LLOYD, COMMISSIONER

Staff:

Jimmy Kim, General Manager  
Cathie Santo Domingo, Assistant General Manager  
Darryl Ford, Superintendent  
City Attorney Representative

---

TO LISTEN TO THE MEETING VIA TELECONFERENCE, YOU MUST DIAL (669) 900-6833, AND ENTER 874 1649 4098 AND THEN PRESS #, OR USE THE LINK <https://us02web.zoom.us/j/87416494098>. PUBLIC COMMENTS WILL BE TAKEN IN PERSON ONLY. EACH SPEAKER WILL BE GRANTED A MAXIMUM OF TWO (2) MINUTES FOR PUBLIC COMMENTS.

NOTICE TO PAID REPRESENTATIVES – IF YOU ARE COMPENSATED TO MONITOR, ATTEND, OR SPEAK AT THIS MEETING, CITY LAW MAY REQUIRE TO REGISTER AS A LOBBYIST AND REPORT YOUR ACTIVITY. SEE LOS ANGELES MUNICIPAL CODE 48.01 ET SEQ. MORE INFORMATION IS AVAILABLE AT <https://ethics.lacity.org/lobbying/>. FOR ASSISTANCE, PLEASE CONTACT THE ETHICS COMMISSION AT (213) 978-1960 OR [ethics.commission@lacity.org](mailto:ethics.commission@lacity.org).

THIS AGENDA AND ITS REPORTS ARE AVAILABLE ONLINE AT: <https://www.laparks.org/commissioners/facility-task-force>.

1. CALL TO ORDER
2. CURRENT BUSINESS
  - A. Cesar Chavez Community Garden  
Discussion of Proposed Project

February 1, 2024

B. MacArthur Lake Stormwater Capture Project  
Discussion of Proposed Project

C. Playground Condition Assessment and Replacement Prioritization  
Informational Report

3. PUBLIC COMMENT

Comments by the Public on Matters within Task Force Jurisdiction

4. NEXT MEETING

The next Facility Repair and Maintenance Commission Task Force Meeting is tentatively scheduled for Thursday, March 7, 2024 at 10:00 A.M. or soon thereafter as the Board of Recreation and Park Commissioners adjourns its Regular Meeting noticed for 9:00 A.M.

5. ADJOURNMENT

Additional Information

Under the California State Ralph M. Brown Act, those wishing to make audio recordings of the Commission Task Force Meetings are allowed to bring tape recorders or camcorders in the Meeting.

Sign language interpreters, assistive listening devices, or any auxiliary aides and/or services may be provided upon request. To ensure availability, you are advised to make your request at least 72 hours prior to the meeting you wish to attend. For additional information, please contact the Commission Office at (213) 202-2640.

Information on Agenda items may be obtained by calling the Commission Office at (213) 202-2640. Copies of the Commission Task Force Agenda may be downloaded from the Department's website at [www.laparks.org](http://www.laparks.org).

CITY OF LOS ANGELES  
DEPARTMENT OF RECREATION AND PARKS  
FACILITY REPAIR AND MAINTENANCE COMMISSION TASK FORCE BRIEFING  
FEBRUARY 1ST, 2024

CultivaLA, Inc. (Organization) is a local community benefit 501(c)(3) non-profit organization that focuses on healthy food access and wellness through people, social enterprise, and environmental justice in Los Angeles. The Organization has existing urban farms in the Los Angeles region and is devoted to using an intergenerational approach to agricultural literacy, workforce development, and community empowerment. The Organization, with the support of Council District 1, is seeking approval to operate and maintain a community garden space (Premises) on property which is in the process of being transferred to RAP, located within the Pico-Union community at 1554 W 11th St., Los Angeles, CA 90015.

The Premises was previously under the jurisdiction of the Community Redevelopment Agency of Los Angeles (CRA/LA), and is being transferred to RAP through the General Services Department (GSD). RAP Staff previously attained Board approval for acquisition of the property via BR 21-191, approved by the Board on November 4th, 2021. The Premises has been functioning as a community garden known as the “Pico Union Cesar Chavez Community Garden” for decades prior to the CRA/LA taking over the property. Recent soil testing determined that remediation is now necessary due to contaminated mulch being imported onto the Premises. Upon the conclusion of remediation work by Stantec, the outside consultant selected for soil testing by RAP, the Organization will resume community programming and regular garden operations.

This project requests the approval of a proposed community garden agreement, CEQA exemption for the maintenance and operation of the garden by the Organization at no cost to RAP, and approval of the existing name to remain, “Cesar Chavez Community Garden.” The Organization has previously committed financial resources in the form of grants, fellowships and in-kind donations amounting to approximately \$373,000.

The proposed design for the Premises includes 15 raised beds, a pollinator/native plants area, and a community event area which is surrounded by a chain-link fence, as depicted in the Design Plan included with this summary (Exhibit A). The Organization will be responsible for garden operations, maintenance and programming, which will include community events, workshops, service days and community cleanups in partnership with outside organizations and agencies including, but not limited to, District 1 Supervisor Hilda Solis, LA County Department of Parks and Recreation, the Los Angeles Workforce Development Board, and the California Conservation Corps. The Organization has conducted outreach to the community through community events and meetings which generated continued community support, and has planned future events for the benefit of the local community who are actively involved in and appreciate the presence of this regenerative open space.

CITY OF LOS ANGELES  
 DEPARTMENT OF RECREATION AND PARKS  
 FACILITY REPAIR AND MAINTENANCE COMMISSION TASK FORCE BRIEFING  
 FEBRUARY 1ST, 2024



VEICINITY AREA

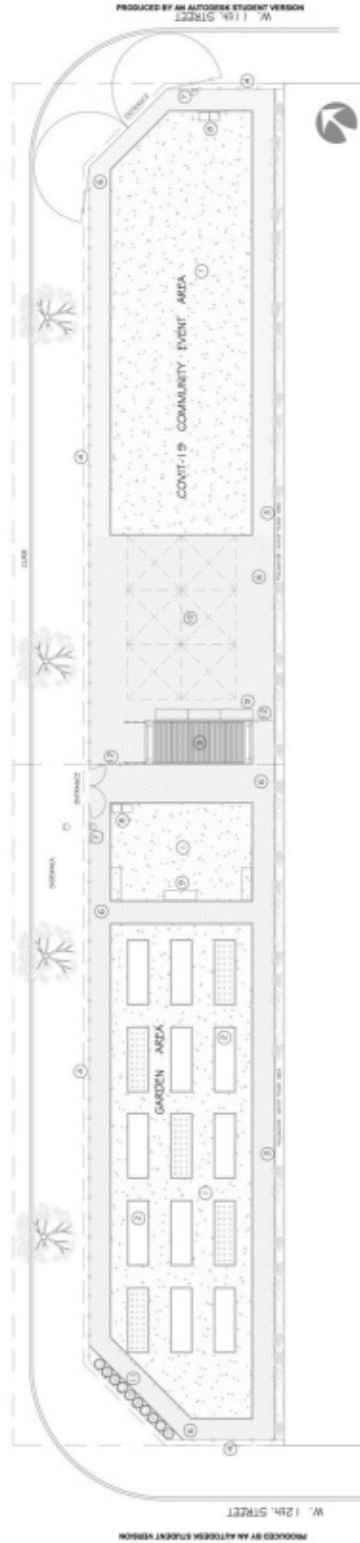
- 1. MASONRY WALL WITH 4' x 8' S.
- 2. POLYBUTYLENE MATS (GARDEN AREA)
- 3. 2' x 4' x 8' REINFORCED CONCRETE FOUNDATION
- 4. 2' x 4' x 8' REINFORCED CONCRETE FOUNDATION
- 5. COLORED REINFORCED CONCRETE FOUNDATION
- 6. 2' x 4' x 8' REINFORCED CONCRETE FOUNDATION
- 7. 2' x 4' x 8' REINFORCED CONCRETE FOUNDATION
- 8. 2' x 4' x 8' REINFORCED CONCRETE FOUNDATION
- 9. 2' x 4' x 8' REINFORCED CONCRETE FOUNDATION
- 10. 2' x 4' x 8' REINFORCED CONCRETE FOUNDATION
- 11. 2' x 4' x 8' REINFORCED CONCRETE FOUNDATION
- 12. 2' x 4' x 8' REINFORCED CONCRETE FOUNDATION

PRODUCED BY AN AUTODESK STUDENT VERSION

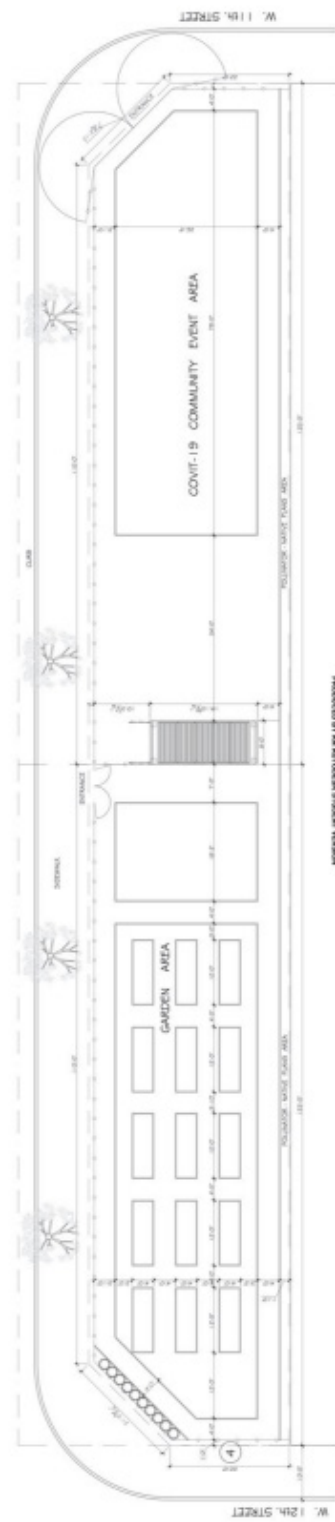


**cultivaLA**  
 Cesar Chavez Community Garden  
 1136 S. Union Avenue  
 Los Angeles, CA 90015

UNION AVENUE



PRODUCED BY AN AUTODESK STUDENT VERSION



PRODUCED BY AN AUTODESK STUDENT VERSION

CITY OF LOS ANGELES  
DEPARTMENT OF RECREATION AND PARKS  
FACILITY REPAIR AND MAINTENANCE COMMISSION TASK FORCE BRIEFING  
February 1, 2024

**Project Name:**

MacArthur Lake Stormwater Capture Project

**Requested Action:**

Provide updates of the Measure W MacArthur Lake Stormwater Project to the Commissioners and seek input to further refine project elements.

**Project Location:**

MacArthur Park is a 29.87-acre park located in Council District 1 at 2230 West 6<sup>th</sup> Street in the Westlake community of the City. The park provides recreational public uses for the community which are centered around the 7.7-acre manmade lake.

**Project Scope:**

The MacArthur Lake Stormwater Capture Project (Project) aims to advance water quality in the Ballona Creek watershed assisting with water quality regulatory standards. The Project will also provide tangible community benefits by partially offsetting potable water use, providing educational opportunities and enhancing the beauty of the Park. The Project would achieve these aims by capturing, treating, and reusing stormwater, installing interpretive signage, and constructing a new water feature.

The Project would divert and treat wet-weather and dry-weather flows from the existing storm drain system through a pretreatment and secondary/filtration treatment process. A portion of the outflow would be introduced into MacArthur Lake for storage. The remaining flow would be released back to the storm drain system. This process would reduce the amount of stormwater and its associated pollutant loads that enter Ballona Creek, the Ballona Creek wetlands, and, ultimately, the Santa Monica Bay. Currently, an automated system is used to replenish the lake with potable water when lake levels drop as a result of evaporation. The diversion of flow from the storm drain system into the lake would lessen the amount of potable water that is used to maintain the lake level (i.e., lake refill). Public signage and information boards would shed light to the details of stormwater management and natural treatment processes of the water feature.

The water feature is being introduced at the west end of the Park, parallel to 7<sup>th</sup> street, and includes a series of low terrace weirs with laminar flow which will create a serene environment with the sound of water flow through the weir walls and visual aesthetics for the community, allowing park patrons to immerse themselves in nature.

**Plant and Trees/ Implementation of Shade:**

The water feature will require the removal of two (2) trees, a Liquidambar Sweet Gum and the Mexican Fan Palm. A total of 10 new trees would be established for mitigation, including Shoestring Acacias, Island Oaks, and Pink Trumpets. The recommended tree removals and tree species to be planted are selected in consultation with the RAP Arborist. The recommended species will suit the landscape of the park and provide shading for families visiting the new playground and water feature. The Project will also include planting of native vegetation.

CITY OF LOS ANGELES  
DEPARTMENT OF RECREATION AND PARKS  
FACILITY REPAIR AND MAINTENANCE COMMISSION TASK FORCE BRIEFING  
February 1, 2024

Community Outreach:

Since August 2021, Los Angeles Sanitation and Environment (LASAN) has conducted a community assessment report and hosted various community engagement meetings and activities to inform stakeholders and community members of the scope of the project. The most recent events were held in-person at MacArthur Park. These events include the Community Resource Fair on April 23, 2022 and the Telenovelas in The Park event, held by Mujeres de la Tierra, on December 3, 2023. These events hosted the attendance of hundreds of community stakeholders.

Funding:

The project was voted into the Round 1 Stormwater Investment Plan (SIP) in fiscal year 20-21. The capital cost for the project is \$37,593,718. LASAN has secured \$20,043,718 through Measure W's Safe Clean Water Program and an additional \$550,000 from Prop K for park improvements. LASAN management is exploring various options, such as requesting more funding from LA County Regional Program, grants, or other City funding to cover the funding gap for the project. It is anticipated that 100% design will be completed by June 2023. It is foreseen, if all funding is identified, the project will be proceeding into bid and award by the Spring of 2025 and construction starting in the Fall/Winter of 2025. Construction is expected to take two (2) years. Operation and maintenance of the project elements is ongoing between LASAN and RAP.

CITY OF LOS ANGELES  
DEPARTMENT OF RECREATION AND PARKS  
FACILITY REPAIR AND MAINTENANCE COMMISSION TASK FORCE BRIEFING  
February 1, 2024

**Attachment 1: Stormwater Capture System Concept**



**Attachment 2: Water Feature Renderings**



CITY OF LOS ANGELES  
DEPARTMENT OF RECREATION AND PARKS  
FACILITY REPAIR AND MAINTENANCE COMMISSION TASK FORCE BRIEFING  
February 1, 2024



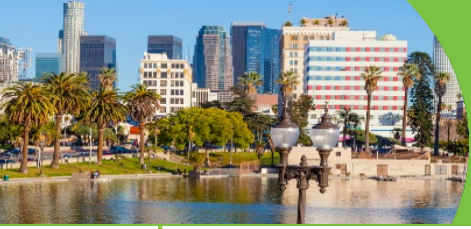




# MacArthur Lake Stormwater Capture Project Facility Repair and Maintenance Commission Task Force

February 1, 2024





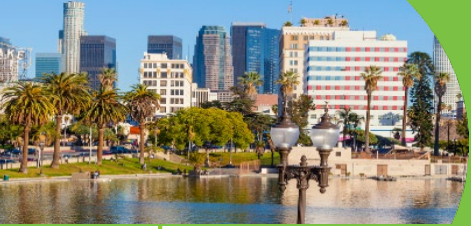
# PROJECT OVERVIEW

This is a Safe Clean Water multi-benefit project funded by LA County's Measure W Regional Program, Round 1. Implementation of the project is led by the City of LAs Sanitation and Environment (LASAN) in partnership with the City of LAs Department of Recreation and Parks (RAP) and the Bureau of Engineering (BOE).

The proposed Project will:

- Advance water quality in the Ballona Creek Watershed
  - Reduce potable water use
  - Provide community benefits and educational opportunities
  - Enhanced urban greening
- The Board of RAP Commissioners conceptually approved the Project on October 1, 2020.
  - LASAN provided project update to the Facility Repair and Maintenance Commission Task Force on June 16, 2022.

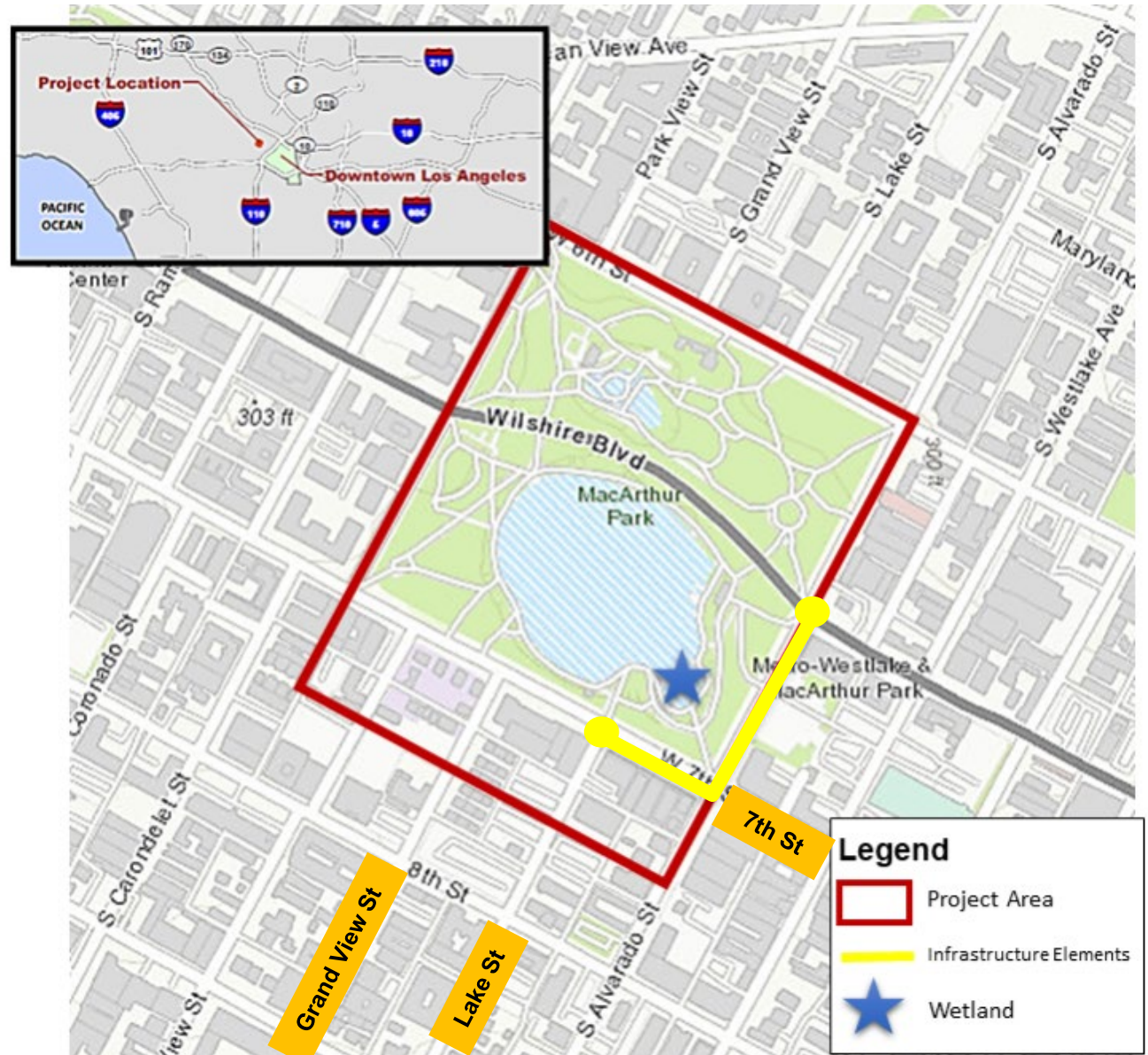




# 2019 Project Concept

## Location of Infrastructure Elements:

- Alvarado Street from Wilshire Blvd. to 7<sup>th</sup> St
- 7<sup>th</sup> Street from Alvarado St to Lake St.





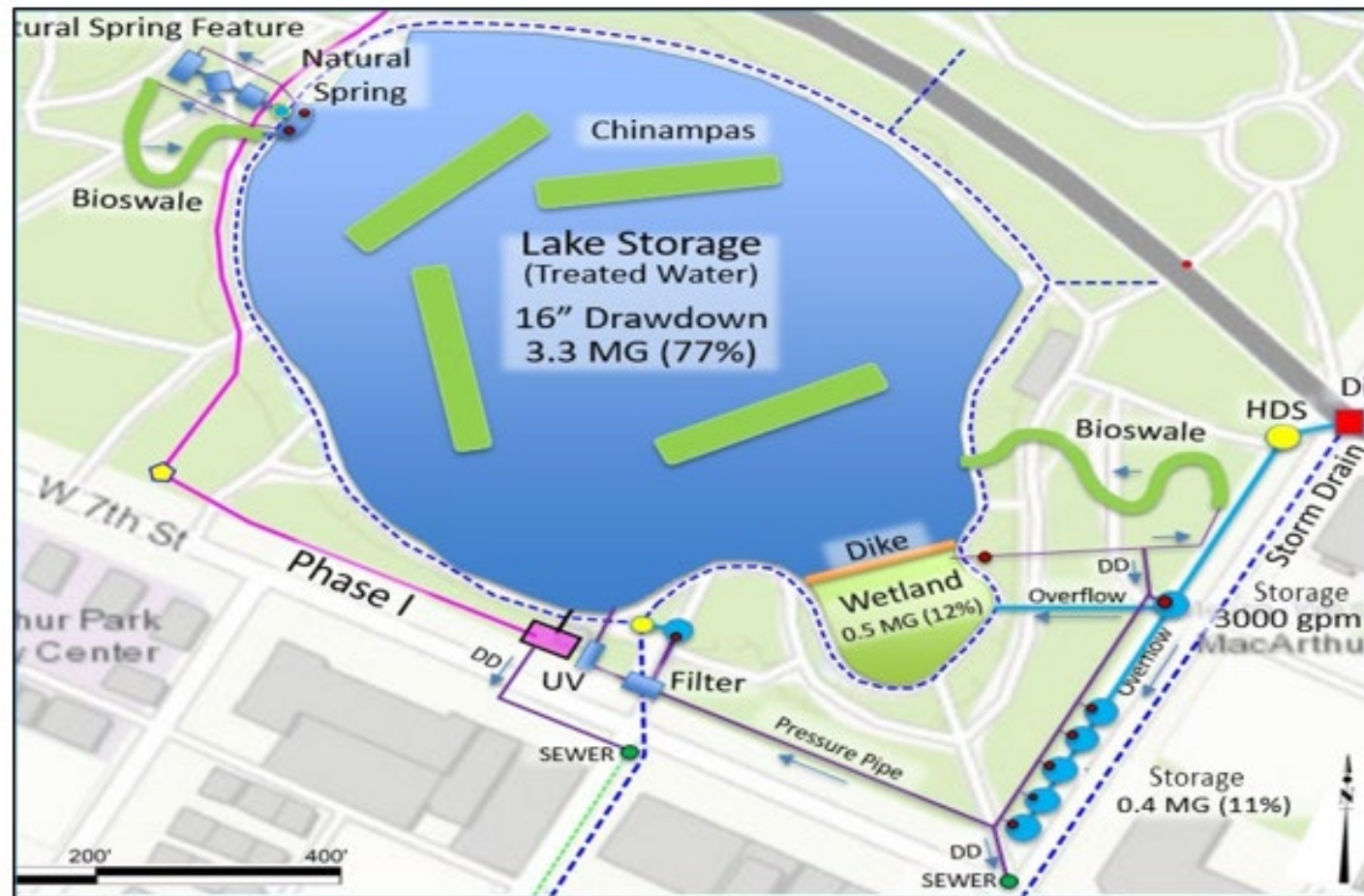
# 2019 Project Concept

## Drainage Area

- 177 acres

## Project Elements

- Diversion Structure
- Hydrodynamic Separator
- 40 vertical Storage Cisterns
- In-lake Storage
- Constructed Wetlands
- On-site treatment
  - Media filtration, UV system & natural bioswales





# 2023 50% Project Design

## Location of Infrastructure Elements:

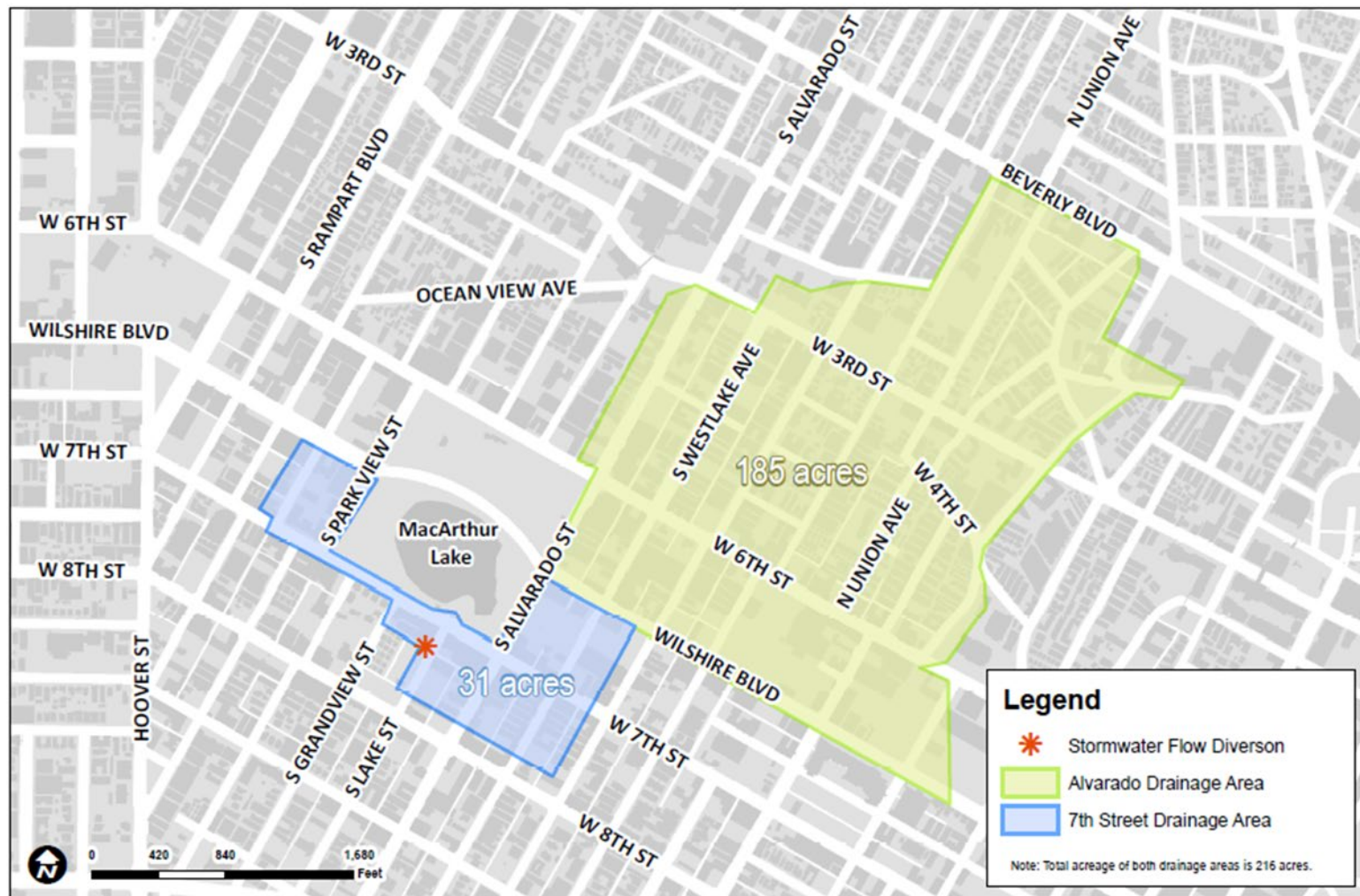
- Lake Street from alley to 7<sup>th</sup> St
- Grandview Street from alley to 7<sup>th</sup> St
- 7<sup>th</sup> Street from Lake St to Grandview St





# PROJECT DETAILS 2023 50% DESIGN

- Drainage Area: 216 acres
- Divert and treat dry weather flows and portions of the wet weather flows through pretreatment (removal of large particles/solids) and secondary treatment (filtration of small particles).
- Discharge the water into MacArthur Lake for storage or return it to the storm drain system
- Recirculate lake water through a new treatment water feature





# PROJECT DETAILS 2023 50% DESIGN

Project components include:

- Stormwater diversion structure
- Pretreatment unit (removal of large solids)
- Pump stations
- Stormwater treatment units (filtration)
- In-lake Storage
- Water Feature





# PROJECT DETAILS

## Preliminary Treatment

- Remove 100% of trash and at least 80% of contaminants, such as Zinc.
- CDS Pretreatment Unit:
  - 12.7 cfs capacity
  - Width: 11'8"
  - length: 16'3¼"







# PROJECT DETAILS

## Secondary Treatment

- 2 StormFilter Units:
  - 4 cfs capacity each
  - Width: 8 ft
  - Length: 22 ft
- Additional removal of Zinc, copper, lead, metals, and bacteria.





# 2022 Proposed Water Feature

- Maximum surface area: 10,000 sq.ft.
- Anticipated removal of a canopy tree and one palm tree.
- Planting additional Riparian trees





# PROJECT DETAILS

- Approximately 6,600 SF
- 2 Tree removals: a Liquidambar Sweet Gum and a Mexican Fan Palm.
- 10 New Trees under RAP Arborist recommendation include: Shoestring Acacias, Island Oaks, and Pink Trumpets.

## Proposed Water Feature





# PROJECT DETAILS

## Proposed Water Feature





# COMMUNITY OUTREACH

- Community Assessment
  - LASAN community outreach team is led by Mujeres de la Tierra (MDLT)

## Engagement Highlights

- Educational presentations at local schools
  - Two workshops February 2022
    - English 40+ participants
    - Spanish 70+ participants
- Community Service Fair
  - April 23, 2022





# COMMUNITY OUTREACH

- Telenovelas In The Park
  - December 3, 2023
  - 33 Stakeholders

## Upcoming

- Love my Community Clean Up and Resource Fair, Pico Union Neighborhood Council
  - February 23, 2024
- Community Resource Fair 2024
  - April 13, 2023





# PROJECT SCHEDULE & FUNDING

Phase	Start Date	End Date	Duration (months)
Pre-Design	02/2021	08/2022	18
Design	05/2023	06/2024	17
B&A	10/2024	05/2025	7
Construction	05/2025	11/2026	18
Post Construction	11/2026	11/2027	12

## Project Funding Sources

- Primary Funding Source:
  - Measure W - Safe, Clean Water Program - \$20M
  - Prop K - \$550k
  
- Potential Additional Funding Opportunities:
  - Additional Regional Program - \$11,109,000
  - Measure W Local Municipal Return - \$4,540,807

PROJECTED PROJECT SCHEDULE DETAIL (BAR CHART)

	FY 2020/21		FY 2021/22				FY 2022/23				FY 2023/24				FY 2024/25				FY 2025/26				FY 2026/27				FY 2027/28	
	2021		2021		2022		2022		2023		2023		2024		2024		2025		2025		2026		2026		2027		2027	
	JFM	AMJ	JAS	OND	JFM	AMJ	JAS	OND	JFM	AMJ	JAS	OND	JFM	AMJ	JAS	OND	JFM	AMJ	JAS	OND	JFM	AMJ	JAS	OND	JFM	AMJ	JAS	OND
Pre-Design	[Orange Bar]																											
Design																												
Bid & Award																												
Construction																												
Post Construction																												



# THANK YOU

## LASAN TEAM

---

**Michael Scaduto P.E, ENV. SP**  
**Division Manager**  
**Safe, Clean Water Implementation Division**  
**[Michael.scaduto@lacity.org](mailto:Michael.scaduto@lacity.org)**  
**SCW Program Manager**

**Carmen Andrade P.E**  
**Civil Engineering Associate**  
**Safe, Clean Water Implementation Division**  
**[Carmen.andrade@lacity.org](mailto:Carmen.andrade@lacity.org)**  
**Project Engineer**

**Alfredo Magallanes P.E**  
**Division Manager**  
**Watershed Protection Division**  
**[alfredo.magallanes@lacity.org](mailto:alfredo.magallanes@lacity.org)**  
**Project Manager**

**Giselle Ramirez**  
**Environmental Engineering Associate**  
**Safe, Clean Water Implementation Division**  
**[giselle.ramirez@lacity.org](mailto:giselle.ramirez@lacity.org)**  
**Project Engineer**



CITY OF LOS ANGELES  
DEPARTMENT OF RECREATION AND PARKS  
FACILITY REPAIR AND MAINTENANCE COMMISSION TASK FORCE BRIEFING  
February 1, 2024

Playground Condition Assessment and Replacement Prioritization

The City of Los Angeles Department of Recreation and Parks (RAP) operates over 16,000 acres of parkland across over 490 parks and recreational facilities. RAP operates and/or maintains over 400 children’s playgrounds – which includes age-appropriate playgrounds for young children (aged 2 to 5) and older children (aged 5 to 12), as well as thirty-eight (38) “Universally Accessible Playgrounds” that go beyond ADA-compliant design to provide opportunities for individuals of different physical, sensory, social, and intellectual abilities to play together.

The City Council has approved two separate motions related to the City’s playgrounds. Both motions request that RAP inventory and assess the condition of the City’s Playgrounds and report back with recommendations and funding needs.

- **Council File No. 22-0605**
  - RAP requested to report back on the condition of all playgrounds in the city.
  - Report should include the year the playground was installed, whether or not it has resilient surfacing, if there is existing shade over the playground, and if the playground has already secured funding for repair or replacement.
  - City Administrative Officer (CAO), in coordination with RAP, to report back on the funding needed to ensure every playground is modernized and has resilient surfacing and shade.  
Report should include recommendations for creating a multi-year capital program to upgrade all playgrounds identified as deficient by the department.
  
- **Council File No. 23-0228**
  - RAP, with assistance of CAO, to report back with update on goals related to “Accessible Play” and the parks eligible to be upgraded to become “Universally Accessible Playgrounds”.
  - Report should include inventory of existing Universally Accessible Playgrounds citywide as well as any funding needs for those sites.

In response to these motions, RAP Planning, Construction, and Maintenance (PCM) staff has begun the process of inventorying and assessing the condition of the City’s Playgrounds and gathering the specific information/data that the City Council requested about each playground. As a part of this process, RAP PCM staff will also be developing a list of prioritized playgrounds sites for replacement based on their status and condition.

A preliminary draft of the Playground Condition Assessment and Replacement Prioritization is being presented to the Task Force for awareness and input. As noted above, RAP staff is in the process of a gathering all the information requested per Council File No. 22-0605 and No. 23-0228 and once complete RAP will prepare the requested reports in response to those motions.

MOTION

The COVID-19 pandemic has had a dramatic impact on how Angelenos live their daily lives. Due to schools and daycares being closed, parents were often desperate to find safe activities for their children. The need to "mask-up" and minimize indoor activities caused many parents to take their children to city parks to use playgrounds and other recreational amenities. This has turned a spotlight on the need for high quality outdoor recreational facilities.

Despite the public's desire for high quality recreational space, city parks have not seen the regular investment needed in order to keep them in good condition. The city's playgrounds are emblematic of this state of disrepair. Many playgrounds still have sand play pits, inadequate shade, and no equipment for people with disabilities.

Due to the sheer volume of playgrounds that need to be upgraded or replaced, a piecemeal approach, where neighborhoods have to wait for scarce Quimby or Measure A allocations in order to see park improvements, has been used by the city which only allows for a few playgrounds to be replaced a year. This is not sustainable or in the best interest of Angelenos - a comprehensive plan is needed to upgrade all of the playgrounds in the city so that they are safe and accessible for all children.

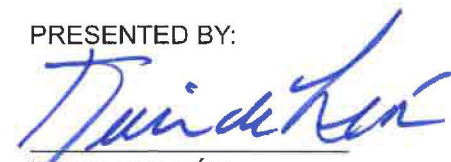
I THEREFORE MOVE that the Department of Recreation and Parks be instructed to report back in 30 days on the condition of all playgrounds in the city.

I FURTHER MOVE that this report should include the year the playground was installed, whether or not it has resilient surfacing, if there is existing shade over the playground, and if the playground has already secured funding for repair or replacement.

I FURTHER MOVE that the City Administrative Officer, in coordination with the Department of Recreation and Parks, report back on the funding needed to ensure every playground is modernized and has resilient surfacing and shade.

I FURTHER MOVE that this report should include recommendations for creating a multi-year capital program to upgrade all playgrounds identified as deficient by the department.

PRESENTED BY:

  
KEVIN DE LEÓN  
Councilmember, 14<sup>th</sup> District

SECONDED BY:



ORIGINAL



MAY 24 2022

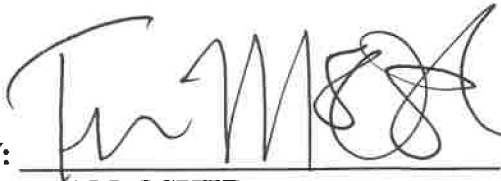
MOTION

Nearly one in five people have a disability in the United States. Further, 13 percent of children enrolled in public school (about 6.7 million) receive services for needs ranging from autism to hearing impairment. Whether a child has cognitive issues, mobility challenges, or both, the design of most urban play areas inadvertently excludes a significant portion of the population playgrounds were built to serve.

In 2010, the Department of Justice revised the *1990 Americans with Disabilities Act*, changing the accessibility standards for playgrounds. The new rules mandate that compliant playgrounds be accessible via ramps and barrier-free travel routes, include a range of accessible play options, and provide an appropriate surface beneath all accessible equipment. A major aspect of making a playground more accessible is the equipment. In San Pedro, the installation of an “accessibility swing” or “supportive swing” (constructed with a harness and tall back support) at Bogdanovich Recreation Center has proven to be a minor, but important, change that has resulted in the ability for an increased use of the park. Identifying upgrades for park equipment that yield to higher accessibility and usage of our city parks is crucial for a more equitable future.

The City of Los Angeles’ Department of Recreation and Parks currently has several “Universally Accessible Playgrounds” where children of all abilities can play side-by-side. A universally accessible design is one that enriches a sensory-rich environment to enable children to develop physically, socially, and emotionally. The Department has a goal of developing additional “Accessible Play” playgrounds and is working to identify more parks citywide which could be enlarged or otherwise accommodate installation of a mid-sized playground to help the vision become a reality.

**I THEREFORE MOVE** that the City Council request the Department of Recreation and Parks, with the assistance of the City Administrative Officer, report with an update on goals related to “Accessible Play” as well as the parks eligible for upgrades to become “Universally Accessible Playgrounds”, specifically those in Council District 15. This report should include an inventory of the existing “Universally Accessible Playgrounds” citywide as well as any funding needs for these sites.

PRESENTED BY:   
TIM McOSKER  
Councilmember, 15th District

ORIGINAL

FEB 28 2023

SECONDED BY: 

PK

## Playground Condition Assessment and Replacement Prioritization

As of: 1/25/24

### General Assessment Key:

1: Poor = Equipment is old, little to no shade, missing equipment  
 2: Fair = Equipment looks used but in good condition  
 3: Good = Equipment looks new, nothing broken

### Replacement Tier Key:

A: Active Replacement projects that are in process. Funding source identified and/or secured.  
 B: Sites that were identified by PMC as a priority based on age/condition  
 C: Sites evaluated as Poor by PMC  
 D: Sites evaluated as Fair by PMC  
 E: Sites evaluated as Good by PMC

CD	Park / Playground	Installation (Year)	# of Playground Pits	Surface Type	Universally Accessible Playground	General Assessment	Date Assessment Completed	Replacement Tier	Notes	Replacement Cost Estimate
8	105th Street	2013	1	Resilient	No	2	10/27/2023	D		TBD
15	109th Street		1	Resilient	No	2	10/27/2023	D		TBD
15	111th Street		1	Resilient	No	2	10/27/2023	D		TBD
8	11th Avenue		1	Resilient	No	2	10/27/2023	A	Active Project Design	\$ 315,000.00
9	49th Street	2012	1	Resilient	No	3	10/27/2023	E		TBD
9	61st Street	2013	1	Resilient	No	1	10/27/2023	C		TBD
8	76th Street	2012	1	Resilient	No	2	10/27/2023	D		TBD
8	97th Street		1	Resilient	No	2	10/27/2023	D		TBD
6	Albert Piantanida	2021	1	Resilient	No	3	10/26/2023	E		TBD
8	Algin Sutton	2018	1	Resilient	No	3	10/25/2023	E		TBD
8	Algin Sutton (Child Care)	2018	1	Resilient	No	3	10/25/2023	A	Active Project Design	\$ 250,000.00
15	Alma		1	Resilient	No	2	10/26/2023	D		TBD
1	Alpine Recreation Center		1	Resilient	No	2	10/31/2023	D		TBD
1	Alverado Terrace	2020	1	Resilient	No	3	12/26/2023	E		TBD
7	Amistad		1	Resilient	No	1	10/27/2023	B	Priority Per Construction	\$ 200,000.00
15	Anderson Senior	2015	1	Resilient	No	3	10/26/2023	E		TBD
6	Andres & Maria Cardenas		1	Resilient	No	3	10/26/2023	E		TBD
8	Angeles Mesa	2020	1	Resilient	No	3	10/30/2023	E		TBD
15	Angels Gate		1	Resilient	No	3	10/26/2023	E		TBD
14	Arroyo Seco (Avenue 64)		1	Sand	No	2	10/28/2023	A	Active Project Design	\$ 400,000.00
14	Arts District Park	2016	1	Resilient	No	2	10/31/2023	D		TBD
9	Avalon/Gage	2015	1	Resilient	No	2	10/30/2023	D		TBD
9	Avalon/San Pedro		1	Resilient	No	2	10/30/2023	D		TBD
10	Baldwin Hills	2015	1	Resilient	Yes	3	10/27/2023	A	Active Project Design	\$ 750,000.00
10	Baldwin Hills (Child Care)		1	Resilient	No	1	10/27/2023	C		TBD
15	Banning	2010	1	Combination	No	2	10/25/2023	D		TBD
15	Banning C.C.	2021	1	Resilient	No	3	10/25/2023	E		TBD
11	Barrington	2013	1	Combination	No	3	10/27/2023	E		TBD
12	Bee Canyon		1	Resilient	No	2	10/27/2023	D		TBD
2	Bellaire	2021	1	Resilient	No	2	10/26/2023	D		TBD
13	Bellevue	2018	2	Resilient	No	2	10/31/2023	D		TBD
10	Benny H. Potter		1	Combination	Yes	2	10/31/2023	D		TBD
11	Bill Rosendahl Del Rey Park		1	Combination	Yes	2	10/26/2023	D		TBD
14	Boyle Heights Sports Center		1	Combination	No	1	10/27/2023	C	Active Project Pre-Design	\$ 385,000.00
6	Branford		1	Resilient	No	1	10/26/2023	C		TBD
6	Branford (Child Care)	2022	1	Resilient	No	3	10/30/2023	E		TBD
5	Briarwood		1	Sand	No	2	10/27/2023	D		TBD
15	Cabrillo Beach		1	Combination	No	2	10/26/2023	D		TBD
7	Carey Ranch		1	Combination	No	1	10/27/2023	C		TBD
1	Carlin G. Smith		2	Combination	No	2	10/28/2023	D		TBD

## Playground Condition Assessment and Replacement Prioritization

As of: 1/25/24

### General Assessment Key:

1: Poor = Equipment is old, little to no shade, missing equipment  
 2: Fair = Equipment looks used but in good condition  
 3: Good = Equipment looks new, nothing broken

### Replacement Tier Key:

A: Active Replacement projects that are in process. Funding source identified and/or secured.  
 B: Sites that were identified by PMC as a priority based on age/condition  
 C: Sites evaluated as Poor by PMC  
 D: Sites evaluated as Fair by PMC  
 E: Sites evaluated as Good by PMC

CD	Park / Playground	Installation (Year)	# of Playgrounds Pits	Surface Type	Universally Accessible Playground	General Assessment	Date Assessment Completed	Replacement Tier	Notes	Replacement Cost Estimate
13	Carlton Way		1	Resilient	No	1	10/31/2023	C		TBD
12	Castle Peak	2020	1	Combination	No	3	10/26/2023	E		TBD
9	Central Avenue Jazz	2015	1	Resilient	No	2	10/27/2023	D		TBD
9	Central Recreation Center	2016	2	Resilient	No	2	10/27/2023	D		TBD
12	Chatsworth North		1	Sand	No	1	10/25/2023	C		TBD
12	Chatsworth Oaks		1	Resilient	No	1	10/26/2023	A	Active Project Pre-Design	\$ 500,000.00
12	Chatsworth South	2016	2	Sand	No	3	10/25/2023	E		TBD
8	Chesterfield Square	2017	1	Resilient	No	2	10/25/2023	D		TBD
5	Cheviot Hills	2017	1	Combination	No	3	10/27/2023	E		TBD
13	Chevy Chase		1	Sand	No	2	10/31/2023	D		TBD
1	Cleland Avenue	2018	1	Resilient	No	2	10/28/2023	D		TBD
3	Costanzo Fire Station 84		1	Resilient	No	3	10/25/2023	E		TBD
10	Country Club Heritage Plaza / Wilton		1	Resilient	No	2	11/13/2023	D		TBD
11	Crestwood Hills		1	Sand	No	2	10/27/2023	B	Priority Per Construction	TBD
11	Culver-Slauson		1	Combination	No	2	10/26/2023	D		TBD
1	Cypress	2022	1	Resilient	No	3	10/28/2023	E		TBD
7	David Gonzales		1	Sand	No	2	10/27/2023	A	Active Project Bid and Award	\$ 450,000.00
2	De Garmo	2013	1	Resilient	Yes	3	10/26/2023	E		TBD
4	De Longpre Park	2019	1	Resilient	No	2	10/31/2023	D		TBD
12	Dearborn		2	Combination	Yes	2	10/26/2023	D		TBD
14	Debs Park (Rose Hills East)		1	Resilient	No	2	10/30/2023	D		TBD
11	Del Rey Lagoon	2020	2	Resilient	No	3	10/26/2023	E		TBD
6	Delano	2018	1	Resilient	No	2	10/26/2023	D		TBD
15	Denker		1	Resilient	No	1	10/25/2023	C		TBD
12	Devonshire/Arleta		1	Resilient	No	2	10/27/2023	D		TBD
7	Devonwood		2	Resilient	No	2	10/27/2023	D		TBD
1	Downey / Albion (Albion)	2019	1	Resilient	Yes	3	10/27/2023	E		TBD
1	Downey / Albion (Rec Center)	2021	1	Resilient	No	3	12/26/2023	E		TBD
15	Drum Barracks	2013	1	Resilient	No	2	10/25/2023	D		TBD
14	Eagle Rock	2022	1	Resilient	No	3	10/28/2023	E		TBD
14	Eagle Rock (Child Care)		1	Combination	No	2	10/28/2023	D		TBD
15	East Wilmington Greenbelt		1	Resilient	No	2	10/26/2023	D		TBD
15	East Wilmington Greenbelt Pocket Park	2018	1	Resilient	No	2	10/26/2023	D		TBD
1	Echo Park (Child Care)	2022	1	Resilient	No	3	10/27/2023	E		TBD
13	Echo Park (Lake)	2012	1	Resilient	No	2	10/27/2023	D		TBD
13	Echo Park (Recreation Center)	2020	2	Resilient	No	3	10/31/2023	E		TBD

## Playground Condition Assessment and Replacement Prioritization

As of: 1/25/24

### General Assessment Key:

1: Poor = Equipment is old, little to no shade, missing equipment  
 2: Fair = Equipment looks used but in good condition  
 3: Good = Equipment looks new, nothing broken

### Replacement Tier Key:

A: Active Replacement projects that are in process. Funding source identified and/or secured.  
 B: Sites that were identified by PMC as a priority based on age/condition  
 C: Sites evaluated as Poor by PMC  
 D: Sites evaluated as Fair by PMC  
 E: Sites evaluated as Good by PMC

CD	Park / Playground	Installation (Year)	# of Playground Pits	Surface Type	Universally Accessible Playground	General Assessment	Date Assessment Completed	Replacement Tier	Notes	Replacement Cost Estimate
14	El Sereno Arroyo	2019	1	Resilient	No	3	10/28/2023	E		\$ 560,000.00
14	El Sereno Recreation Center	2023	2	Resilient	No	3	12/23/2023	D		TBD
1	Elysian Park (Bishop Canyon)		3	Sand	No	2	10/31/2023	B	Priority Per Construction	TBD
13	Elysian Park (Adaptive Center)		1	Resilient	No	3	10/31/2023	E		TBD
1	Elysian Park (Angels Point / Lower Angels)		1	Resilient	No	2	11/13/2023	D		\$ 400,000.00
1	Elysian Park (Buena Vista Meadows)		1	Combination	No	2	10/31/2023	D		TBD
1	Elysian Park (Casanova Terrace)	2022	1	Resilient	No	3	10/31/2023	E		TBD
1	Elysian Park (Grace Simmons Lodge)		1	Combination	No	2	10/31/2023	D		TBD
13	Elysian Park (Section 9)		2	Sand	No	2	12/26/2023	D		TBD
13	Elysian Park (Stadium Way / Scott Road)		1	Combination	No	2	11/13/2023	B	Priority Per Construction	TBD
13	Elysian Valley	2023	1	Resilient	No	3	10/31/2023	E		TBD
5	Encino Park		2	Combination	No	2	10/26/2023	D		TBD
14	Evergreen (Child Care)	2022	1	Resilient	No	3	10/27/2023	E		TBD
14	Evergreen Recreation Center		1	Resilient	No	2	10/27/2023	D		TBD
9	Expo Park (Child Care)	2017	1	Resilient	No	2	12/26/2023	D		TBD
12	Fallbrook	2020	1	Resilient	No	3	10/27/2023	E		TBD
6	Fernangeles		1	Combination	Yes	2	10/26/2023	D		TBD
3	Four Oaks		1	Sand	No	2	10/26/2023	D		TBD
7	Fox & Laurel		1	Resilient	No	2	10/27/2023	D		TBD
9	Fred Roberts		1	Combination	No	2	10/27/2023	D		TBD
2	Fulton/Vanowen		1	Resilient	No	1	10/25/2023	C		TBD
14	Garvanza Park		2	Combination	No	2	10/28/2023	A	Active Project Design	\$ 600,000.00
10	Genesee	2020	1	Resilient	No	3	10/27/2023	E		TBD
9	Gilbert Lindsay	2010	2	Combination	No	2	10/25/2023	D		TBD
10	Gladys Jean Wesson		1	Resilient	No	2	10/25/2023	D		TBD
1	Glassell Park	2018	1	Combination	No	2	10/28/2023	D		TBD
13	Glenhurst	2022	1	Resilient	No	3	10/31/2023	E		TBD
12	Granada Hills		2	Combination	No	2	10/26/2023	D		TBD
14	Grand Hope		1	Resilient	No	3	11/13/2023	E		TBD
9	Green Meadows		3	Combination	No	2	10/24/2023	A	Active Project Design	\$ 720,000.00
2	Greenwood Square		1	Resilient	No	2	10/26/2023	D		TBD
4	Griffith Park (Bronson Canyon Lower)		1	Sand	No	1	10/31/2023	C		TBD
4	Griffith Park (Bronson Canyon Upper)		1	Resilient	No	1	10/31/2023	C		TBD

## Playground Condition Assessment and Replacement Prioritization

As of: 1/25/24

### General Assessment Key:

1: Poor = Equipment is old, little to no shade, missing equipment  
 2: Fair = Equipment looks used but in good condition  
 3: Good = Equipment looks new, nothing broken

### Replacement Tier Key:

A: Active Replacement projects that are in process. Funding source identified and/or secured.  
 B: Sites that were identified by PMC as a priority based on age/condition  
 C: Sites evaluated as Poor by PMC  
 D: Sites evaluated as Fair by PMC  
 E: Sites evaluated as Good by PMC

CD	Park / Playground	Installation (Year)	# of Playground Pits	Surface Type	Universally Accessible Playground	General Assessment	Date Assessment Completed	Replacement Tier	Notes	Replacement Cost Estimate
4	Griffith Park (Crystal Springs)		1	Sand	No	2	10/31/2023	B	Priority Per Construction	TBD
4	Griffith Park (Ferndell)		1	Resilient	No	3	10/31/2023	E		TBD
4	Griffith Park (Ferraro)		1	Resilient	No	3	10/31/2023	E		TBD
4	Griffith Park (Lake Hollywood)	2016	1	Resilient	No	3	10/31/2023	E		TBD
4	Griffith Park (Recreation Complex)	2014	1	Combination	No	2	10/31/2023	D		TBD
4	Griffith Park (Shanes Inspiration)	2019	2	Combination	Yes	3	10/31/2023	E		TBD
4	Griffith Park (Vermont Canyon)	2019	1	Resilient	No	3	10/31/2023	E		TBD
14	Guardia Park	2023	1	Resilient	No	2	10/30/2023	D		TBD
7	Hansen Dam		3	Combination	Yes	2	10/27/2023	D		TBD
7	Hansen Dam (Orcas)		1	Sand	No	2	10/25/2023	D		TBD
15	Harbor City		1	Resilient	No	3	10/25/2023	E		TBD
15	Harbor Highland	2010	2	Combination	No	2	10/25/2023	D		TBD
4	Harold A. Henry		1	Sand	No	1	10/31/2023	C		TBD
14	Hazard Park		2	Combination	Yes	1	10/27/2023	C		TBD
14	Hermon Park	2020	1	Resilient	Yes	2	10/25/2023	D		TBD
14	Highland Park	2023	1	Resilient	No	2	10/25/2023	D		TBD
12	Holleigh Berson		1	Resilient	No	2	10/31/2023	D		TBD
14	Hollenbeck Park	2016	1	Resilient	No	2	10/25/2023	D		TBD
13	Hollywood		2	Combination	No	1	10/31/2023	C		TBD
5	Holmby Hills	2023	2	Resilient	No	3	10/27/2023	E		TBD
1	Hoover	2018	1	Resilient	No	3	10/30/2023	E		TBD
8	Hoover- Gage		1	Resilient	No	1	10/25/2023	C		TBD
1	Hope And Peace Park		1	Resilient	No	1	11/13/2023	C		TBD
14	Hostetter / Lou Costello		1	Resilient	No	3	10/27/2023	E		TBD
7	Howard Finn	2013	1	Combination	Yes	1	10/25/2023	C		TBD
7	Hubert Humphrey	2014	1	Combination	Yes	2	10/27/2023	D		TBD
5	Irving Schachter	2017	2	Resilient	No	3	10/26/2023	E		TBD
8	Jacaranda		1	Resilient	No	2	10/27/2023	D		TBD
8	Jackie Tatum Harvard	2016	1	Resilient	Yes	2	10/25/2023	D		TBD
2	Jaime Beth Slavin	2013	1	Combination	Yes	2	10/26/2023	D		TBD
15	Janet Shour Harbor Gateway Park	2012	1	Resilient	No	2	10/26/2023	D		TBD
6	Jesse Owens	2022	1	Resilient	No	3	10/26/2023	E		TBD
10	Jim Gilliam	2018	1	Resilient	No	3	10/27/2023	E		TBD
10	Jim Gilliam (Child Care)	2019	1	Resilient	No	3	10/27/2023	E		TBD
3	John Quimby		2	Combination	No	2	10/25/2023	D		TBD
9	Julian C. Dixon	2012	1	Resilient	No	2	10/25/2023	D		TBD
13	Juntos Family		1	Resilient	No	1	10/31/2023	B	Priority Per Construction	TBD

## Playground Condition Assessment and Replacement Prioritization

As of: 1/25/24

### General Assessment Key:

- 1: Poor = Equipment is old, little to no shade, missing equipment
- 2: Fair = Equipment looks used but in good condition
- 3: Good = Equipment looks new, nothing broken

### Replacement Tier Key:

- A: Active Replacement projects that are in process. Funding source identified and/or secured.
- B: Sites that were identified by PMC as a priority based on age/condition
- C: Sites evaluated as Poor by PMC
- D: Sites evaluated as Fair by PMC
- E: Sites evaluated as Good by PMC

CD	Park / Playground	Installation (Year)	# of Playground Pits	Surface Type	Universally Accessible Playground	General Assessment	Date Assessment Completed	Replacement Tier	Notes	Replacement Cost Estimate
7	Kagel Canyon		1	Sand	No	1	10/25/2023	B	Priority Per Construction	TBD
15	Ken Malloy (Harbor Sports)		1	Resilient	No	2	10/25/2023	D		TBD
15	Ken Malloy Harbor Regional	2017	1	Combination	Yes	2	10/25/2023	D		TBD
12	Knapp Ranch		1	Sand	No	2	10/25/2023	D		TBD
12	Knapp Ranch West		1	Sand	No	1	10/25/2023	C		TBD
4	LA High Memorial Park		1	Resilient	No	2	10/31/2023	D		TBD
13	La Mirada Park	2013	1	Resilient	No	2	10/31/2023	D		TBD
10	Lafayette Park	2019	1	Resilient	No	3	10/31/2023	E		TBD
13	Lake Street Recreation Center		1	Combination	Yes	2	10/31/2023	D		TBD
7	Lake View Terrace	2019	1	Resilient	No	2	10/25/2023	D		TBD
3	Lanark		1	Combination	No	1	10/25/2023	C		TBD
3	Lanark Shelby Park		1	Sand	No	1	10/28/2023	C		TBD
4	Las Palmas Senior		1	Sand	No	2	10/31/2023	D		TBD
9	Lathem	2016	1	Resilient	No	2	10/25/2023	D		TBD
4	Laurel Canyon		1	Sand	No	1	10/27/2023	C		TBD
12	Lazy J		1	Combination	No	2	10/26/2023	D		TBD
15	Leland	2010	1	Resilient	No	2	10/26/2023	D		TBD
13	Lemon Grove	2021	1	Resilient	No	2	10/31/2023	D		TBD
10	Lesile Shaw	2015	1	Resilient	No	2	10/30/2023	D		TBD
13	Lexington Pocket Park		2	Combination	No	1	10/31/2023	C		TBD
1	Lincoln Heights	2019	1	Combination	No	2	10/30/2023	D		TBD
14	Lincoln Park (Plaza de La Raza)		2	Combination	Yes	2	10/30/2023	B	Funding Being Identified	\$ 1,500,000.00
14	Lincoln Park (Valley Blvd)	2023	2	Resilient	No	2	10/30/2023	D		TBD
11	Linnie Canal		1	Resilient	No	3	10/26/2023	E		TBD
7	Little Landers		1	Resilient	No	2	10/26/2023	D		TBD
8	Loren Miller	2020	3	Resilient	No	3	10/30/2023	E		TBD
8	Loren Miller (Child Care)		2	Resilient	No	2	12/26/2023	D		TBD
6	Louise		1	Combination	No	2	10/26/2023	D		TBD
1	MacArthur (Signal Building)	2021	2	Resilient	No	2	10/31/2023	D		TBD
13	Madison Avenue	2019	1	Combination	No	2	12/26/2023	D		TBD
13	Madison West		1	Resilient	No	2	12/26/2023	D		TBD
12	Mae Boyer		2	Sand	No	2	10/25/2023	A	Active Project Pre-Design	\$ 735,000.00
11	Mar Vista		1	Combination	No	2	10/26/2023	D		TBD
11	Marr Triangle		1	Sand	No	1	10/26/2023	B	Priority Per Construction	TBD
6	Marson		1	Resilient	No	2	10/26/2023	D		TBD
15	Martin J Bogdanovich	2016	1	Combination	No	2	10/26/2023	D		TBD
8	Martin Luther King Jr.		2	Combination	No	2	10/25/2023	D		TBD
12	Mason	2014	2	Combination	Yes	3	10/25/2023	E		TBD
12	Mason (Child Care)		1	Resilient	No	2	10/26/2023	A	Active Project Pre-Design	\$ 250,000.00
7	McGroarty		2	Sand	No	2	10/25/2023	D		TBD



## Playground Condition Assessment and Replacement Prioritization

As of: 1/25/24

### General Assessment Key:

1: Poor = Equipment is old, little to no shade, missing equipment  
 2: Fair = Equipment looks used but in good condition  
 3: Good = Equipment looks new, nothing broken

### Replacement Tier Key:

A: Active Replacement projects that are in process. Funding source identified and/or secured.  
 B: Sites that were identified by PMC as a priority based on age/condition  
 C: Sites evaluated as Poor by PMC  
 D: Sites evaluated as Fair by PMC  
 E: Sites evaluated as Good by PMC

CD	Park / Playground	Installation (Year)	# of Playground Pits	Surface Type	Universally Accessible Playground	General Assessment	Date Assessment Completed	Replacement Tier	Notes	Replacement Cost Estimate
9	McKinley		1	Sand	No	2	10/25/2023	D		TBD
1	Montecito Heights	2016	2	Resilient	No	1	10/25/2023	C		TBD
2	Moorpark		1	Resilient	No	3	10/25/2023	E		TBD
8	Mount Carmel		1	Resilient	No	3	10/26/2023	E		TBD
8	Norman O. Houston		1	Combination	No	2	10/27/2023	D		TBD
15	Normandale		2	Resilient	No	3	10/25/2023	E		TBD
1	Normandie	2017	1	Resilient	No	2	10/31/2023	D		TBD
13	North Atwater	2013	1	Resilient	No	1	10/31/2023	C		TBD
6	North Hills	2019	1	Resilient	No	3	10/26/2023	E		TBD
2	North Hollywood		1	Resilient	No	2	10/25/2023	D		TBD
2	North Weddington	2017	1	Combination	No	2	10/25/2023	D		TBD
12	Northridge	2013	2	Combination	No	2	10/27/2023	D		TBD
11	Oakwood		1	Resilient	No	1	10/26/2023	C		TBD
9	Orchard Avenue		1	Resilient	No	2	10/27/2023	D		TBD
9	Orthopaedic		2	Resilient	Yes	3	10/30/2023	E		TBD
5	Palisades Recreation Center		1	Sand	No	2	10/27/2023	A	Active Project Pre-Design	\$ 2,000,000.00
5	Palms (Child Care)	2020	1	Resilient	No	3	10/27/2023	E		TBD
5	Palms Recreation		1	Resilient	No	3	10/27/2023	E		TBD
5	Pan Pacific (Lower)	2019 2022	3	Resilient	Yes	3	10/27/2023	E		TBD
5	Pan Pacific (Renee's)		2	Resilient	Yes	3	10/27/2023	E		TBD
5	Pan Pacific (Senior Center)		1	Combination	No	2	10/27/2023	D		TBD
6	Panorama	2016	1	Resilient	No	3	10/26/2023	E		TBD
3	Parthenia	2020	1	Combination	No	3	10/26/2023	E		TBD
1	Patton Street		1	Combination	No	2	10/31/2023	D		TBD
14	Pecan	2008	1	Combination	No	3	10/27/2023	E		TBD
15	Peck		1	Combination	No	2	10/26/2023	D		TBD
11	Penmar		1	Combination	No	3	10/26/2023	E		TBD
14	Pershing Square		2	Resilient	No	2	10/31/2023	D		TBD
1	Pico Union		1	Resilient	No	3	10/31/2023	E		TBD
5	Poinsetta	2011	1	Sand	No	1	10/31/2023	C		TBD
15	Point Fermin		1	Combination	No	1	10/26/2023	C		TBD
12	Porter Ridge	2018	1	Resilient	No	3	10/26/2023	E		TBD
14	Prospect Park		1	Combination	No	1	10/27/2023	A	Active Project Construction	\$ 450,000.00
10	Queen Anne	2020	1	Resilient	No	2	10/31/2023	D		TBD
14	Ramon Garcia	2022	2	Combination	No	3	10/27/2023	E		TBD
10	Rancho Cienega (Ira Massey)	2022	1	Resilient	No	3	10/27/2023	E		TBD
10	Rancho Cienega Park		1	Combination	No	3	10/27/2023	A	Active Project Design	\$ 1,500,000.00
3	Randall Simmons	2023	1	Resilient	No	3	10/25/2023	E		TBD
15	Rena		1	Resilient	No	2	10/26/2023	D		TBD

## Playground Condition Assessment and Replacement Prioritization

As of: 1/25/24

### General Assessment Key:

1: Poor = Equipment is old, little to no shade, missing equipment  
 2: Fair = Equipment looks used but in good condition  
 3: Good = Equipment looks new, nothing broken

### Replacement Tier Key:

A: Active Replacement projects that are in process. Funding source identified and/or secured.  
 B: Sites that were identified by PMC as a priority based on age/condition  
 C: Sites evaluated as Poor by PMC  
 D: Sites evaluated as Fair by PMC  
 E: Sites evaluated as Good by PMC

CD	Park / Playground	Installation (Year)	# of Playground Pits	Surface Type	Universally Accessible Playground	General Assessment	Date Assessment Completed	Replacement Tier	Notes	Replacement Cost Estimate
3	Reseda		2	Combination	No	2	10/26/2023	D		TBD
10	Reyner		1	Resilient	No	2	10/26/2023	D		TBD
8	Richardson Family Park		1	Combination	No	2	12/26/2023	A	Active Project Bid and Award	\$ 1,000,000.00
1	Rio De Los Angeles		1	Combination	Yes	1	10/30/2023	B	Priority Per Construction	TBD
7	Ritchie Valens (Pool)		1	Combination	No	1	10/27/2023	C		TBD
7	Ritchie Valens	2013	1	Combination	Yes	2	10/27/2023	D		TBD
4	Robert Burns		1	Sand	No	2	11/13/2023	D		TBD
5	Robertson	2019	1	Resilient	No	3	10/27/23	E		TBD
13	Rockwood		1	Resilient	No	2	12/26/2023	D		TBD
7	Roger Jessup		3	Sand	No	2	10/27/2023	A	Active Project Design	\$ 900,000.00
8	Rolland Curtis		2	Resilient	No	2	10/27/2023	D		TBD
14	Rose Hills Recreation Center	2019	1	Sand	No	1	10/30/2023	C		TBD
15	Rosecrans	2008	2	Combination	No	2	10/26/2023	D		TBD
9	Ross Snyder	2016	1	Resilient	No	2	10/30/2023	D		TBD
3	Runnymead		1	Resilient	No	3	10/25/2023	E		TBD
11	Rustic Canyon		1	Sand	No	2	10/27/2023	B	Priority Per Construction	TBD
8	Saint Andrews		1	Resilient	No	2	10/25/2023	A	Active Project Design	\$ 400,000.00
7	San Fernando Road		1	Resilient	No	2	10/31/2023	D		TBD
14	San Pascual	2018	1	Resilient	No	3	10/28/2023	E		TBD
12	Sean Brown Park		1	Combination	No	2	10/25/2023	D		TBD
13	Seily Rodriguez		2	Resilient	No	2	12/26/2023	D		TBD
13	Selma		1	Resilient	No	1	11/13/2023	C		TBD
10	Seoul International Park		1	Resilient	No	2	10/31/2023	D		TBD
6	Sepulveda Basin (Balboa Lake)		1	Combination	Yes	1	10/25/2023	C		TBD
6	Sepulveda Basin (Balboa Sports)		3	Combination	No	1	10/25/2023	C		TBD
6	Sepulveda Basin (Woodley)		1	Sand	No	1	10/25/2023	C		TBD
6	Sepulveda Recreation Center	2015	3	Resilient	Yes	3	10/26/2023	E		TBD
3	Serrania		1	Resilient	No	3	10/25/2023	E		TBD
3	Shadow Ranch		2	Sand	Yes	1	10/25/2023	C		TBD
10	Shatto Recreation		1	Resilient	No	2	11/13/2023	B	Funding Being Identified	\$ 170,000.00
13	Silver Lake	2018	2	Resilient	No	3	11/13/2023	E		TBD
9	Slauson	2016	1	Resilient	No	2	10/25/2023	D		TBD
15	South Broadway Pocket Park		1	Resilient	No	2	10/27/2023	D		TBD
9	South Park	2018	2	Combination	Yes	2	10/27/2023	D		TBD
9	South Park (Child Care)		1	Resilient	No	2	10/25/2023	D		TBD
8	South Victoria	2019	1	Resilient	No	2	10/27/2023	D		TBD
14	Spring Street		1	Resilient	No	3	11/13/2023	E		TBD
14	State Street	2013	1	Combination	No	2	10/27/2023	A	Active Project Pre-Design	\$ 765,000.00

## Playground Condition Assessment and Replacement Prioritization

As of: 1/25/24

### General Assessment Key:

1: Poor = Equipment is old, little to no shade, missing equipment  
 2: Fair = Equipment looks used but in good condition  
 3: Good = Equipment looks new, nothing broken

### Replacement Tier Key:

A: Active Replacement projects that are in process. Funding source identified and/or secured.  
 B: Sites that were identified by PMC as a priority based on age/condition  
 C: Sites evaluated as Poor by PMC  
 D: Sites evaluated as Fair by PMC  
 E: Sites evaluated as Good by PMC

CD	Park / Playground	Installation (Year)	# of Playground Pits	Surface Type	Universally Accessible Playground	General Assessment	Date Assessment Completed	Replacement Tier	Notes	Replacement Cost Estimate
7	Stonehurst		1	Resilient	No	2	10/26/2023	D		TBD
11	Stoner		1	Sand	Yes	2	10/27/2023	D		TBD
4	Studio City	2014	1	Combination	Yes	2	10/25/2023	D		TBD
6	Sun Valley	2018	2	Combination	No	3	10/26/2023	E		TBD
7	Sunland	2019	2	Combination	No	2	10/25/2023	D		TBD
1	Sycamore Grove Park	2009	2	Combination	Yes	2	10/25/2023	D		TBD
1	Sycamore Grove Park (Ramon Hall)	2020	1	Resilient	No	3	12/26/2023	E		TBD
7	Sylmar	2016	1	Resilient	No	2	10/27/2023	D		TBD
3	Tarzana	2013	1	Combination	No	2	10/26/2023	D		TBD
3	Tarzana (Child Care)		1	Combination	No	2	10/26/2023	D		TBD
12	Taxco		1	Combination	No	3	10/26/2023	E		TBD
7	Telfair		1	Sand	No	1	10/31/2023	B	Priority Per Construction	TBD
11	Temescal Canyon		2	Resilient	No	2	10/27/2023	D		TBD
2	Tiara Street		1	Combination	No	2	10/24/2023	D		TBD
1	Toberman	2013	2	Resilient	No	1	11/13/2023	C		TBD
6	Tobias		1	Resilient	Yes	1	10/26/2023	B	Priority Per Construction	\$ 1,100,000.00
9	Trinity	2013	1	Resilient	No	1	10/30/2023	C		TBD
1	Unidad Park		1	Resilient	No	3	10/31/2023	E		TBD
2	Valley Glen		1	Combination	Yes	2	10/25/2023	D		TBD
2	Valley Plaza (Victory Valley Child Care)	2022	1	Resilient	No	3	10/26/2023	E		TBD
2	Valley Plaza	2020	1	Resilient	No	3	10/26/2023	E		TBD
2	Valley Plaza (Laurel Grove)	Replacement Playground Under Construction	1	Combination	No	Replacement Playground Under Construction	N/A	A	Active Project Construction	\$ 850,000.00
2	Valley Village		2	Combination	No	2	10/25/2023	D		TBD
8	Van Ness		1	Combination	No	2	10/27/2023	A	Active Project Bid and Award	\$ 500,000.00
8	Van Ness (Child Care)	2022	2	Resilient	No	3	10/26/2023	E		TBD
6	Van Nuys	2011	1	Resilient	No	1	10/26/2023	C		TBD
4	Van Nuys Sherman Oaks		2	Combination	Yes	3	10/25/2023	E		TBD
4	Van Nuys Sherman Oaks (Pool)	2023	1	Resilient	No	3	12/26/2023	E		TBD
11	Venice Beach (Rose Avenue)	2020	2	Combination	No	2	10/30/2023	D		TBD
11	Venice Beach (Windward Plaza)	1999	1	Sand	No	Demolished	N/A	A	Active Project Pre-Design	\$ 5,000,000.00
9	Vermont - Gage	2016	1	Resilient	Yes	2	10/25/2023	D		TBD
8	Vermont Miracle		1	Resilient	No	2	10/26/2023	D		TBD
9	Vermont Square	2016	1	Resilient	No	2	10/26/2023	D		TBD
11	Via Dolce		1	Resilient	No	2	10/26/2023	D		TBD
2	Victory Vineland		2	Resilient	No	2	10/26/2023	D		TBD
12	Viking		1	Sand	No	1	10/26/2023	C		TBD

## Playground Condition Assessment and Replacement Prioritization

As of: 1/25/24

### General Assessment Key:

1: Poor = Equipment is old, little to no shade, missing equipment  
 2: Fair = Equipment looks used but in good condition  
 3: Good = Equipment looks new, nothing broken

### Replacement Tier Key:

A: Active Replacement projects that are in process. Funding source identified and/or secured.  
 B: Sites that were identified by PMC as a priority based on age/condition  
 C: Sites evaluated as Poor by PMC  
 D: Sites evaluated as Fair by PMC  
 E: Sites evaluated as Good by PMC

CD	Park / Playground	Installation (Year)	# of Playground Pits	Surface Type	Universally Accessible Playground	General Assessment	Date Assessment Completed	Replacement Tier	Notes	Replacement Cost Estimate
10	Vineyard	2020	1	Resilient	No	3	10/27/2023	E		TBD
11	Vista Del Mar		1	Resilient	No	3	10/27/2023	B	Priority Per Construction	TBD
14	Wabash		2	Resilient	No	2	10/27/2023	D		TBD
9	Wall St	2013	1	Resilient	No	2	10/26/2023	D		TBD
3	Warner Ranch		1	Sand	No	2	10/25/2023	D		TBD
10	Washington Irving	2022	1	Resilient	No	3	10/27/2023	E		TBD
15	Watts Community Park		1	Resilient	No	2	10/26/2023	D		TBD
10	West Adams		1	Resilient	No	1	11/13/2023	C		TBD
11	Westchester	2011	1	Combination	No	2	10/30/2023	D		TBD
9	Western Gage	2020	1	Resilient	No	3	12/26/2023	E		TBD
10	Westside Neighborhood		2	Combination	Yes	2	10/27/2023	D		TBD
5	Westwood Gardens		1	Resilient	No	2	10/27/2023	D		TBD
5	Westwood Park (Aidans)	2022	3	Combination	Yes	3	10/27/2023	E		TBD
12	Wilbur Tampa	2018	1	Resilient	No	1	10/26/2023	C		TBD
15	Wilmington Recreation Center		1	Combination	No	2	10/25/2023	D		TBD
15	Wilmington Veterans		1	Resilient	No	2	10/26/2023	D		TBD
12	Winnetka		1	Combination	No	2	10/25/2023	D		TBD
12	Winnetka (Child Care)		1	Combination	No	2	10/25/2023	D		TBD
5	Woodbine	2021	1	Resilient	No	3	10/26/2023	E		TBD
2	Woodbridge	2020	2	Resilient	No	2	10/25/2023	D		TBD
3	Woodland Hills	2017	2	Resilient	No	3	10/25/2023	E		TBD
14	York Park	2014	1	Resilient	No	2	10/28/2023	D		TBD
14	Yosemite Recreation Center		1	Combination	No	2	10/28/2023	D		TBD
13	Yucca Mini Park		1	Resilient	No	2	11/13/2023	D		TBD
12	Zelzah		1	Sand	No	2	10/26/2023	D		TBD