

# LOU COSTELLO

SENIOR CENTER



**3121 E. Olympic Blvd. Los Angeles, CA 90023**

**Phone: (213)485-9143**

**Email: [COSTELLO.SENIORCENTER@LACITY.ORG](mailto:COSTELLO.SENIORCENTER@LACITY.ORG)**

**WEBSITE: <https://www.laparks.org/scc/costello>**



# FACILITY INFORMATION

---



## HOURS OF OPERATION

## HORAS DE OPERACIÓN

Monday - Friday

Lunes- Viernes

9:00 AM - 5:00 PM

Saturday

Sabado

Closed/ Permit Available

Cerrado / permiso disponible

Sunday

Domingo

Closed/ Permit Available

Cerrado / permiso disponible

---

## IMPORTANT PHONE NUMBER

### NÚMEROS DE TELÉFONO

### IMPORTANTES

Costello Senior Center Office	(213) 485-9143
Costello Center	(213) 485-9111
Region Office	(213) 485-1310
Park Film Office	(323) 644-6220
Municipal Sports	(818) 246-5613
Office of Public Safety	(213) 978-4670
Park Rangers	(323) 906-7390
LAPD Non- Emergency	(877) ASK-LAPD

## IMPORTANT DATES

### FECHAS IMPORTANTES

Spring Event	4/2/24
Mother's Day Event	5/16/24
Father's Day Event	6/20/24
Memorial Day 05/27/24	CLOSED
Juneteenth 06/19/24	CLOSED

---

## IMPORTANT INFORMATION

All programs are offered on a first-come, first-serve basis.

Participants must have reached the minimum age by the first day of the program.

All classes and programs are subject to change.

Persons with disabilities are welcome to participate in our programs.

Reasonable accommodations will be made available with prior arrangements.

*Achieving gender equity through continuous commitment to girls and women in sports.*

---

# Registration Information

Program registrations are accepted on a first-come, first-serve basis.

Full payment is required at time of registration.

A participant is not considered registered until full payment has been received.

Payments may be made by cash, check, or credit card (Visa or Mastercard only).

Please make checks payable to the City of Los Angeles.

When paying in cash, please have exact amount.

Recreation staff cannot make change.

A \$35 collection fee will be charged for each returned check.

Administration may cancel or combine activities if minimum enrollment is not met.

Class times and dates are subject to change.

“Persons with disabilities are welcomed to participate in our classes and programs.

Reasonable accommodations will be made with prior arrangements. Please be aware that some accommodations may take 30 days or longer. Please submit your request for an accommodation as soon as possible.”

---

## Refund Policy

You may request a refund before the program's scheduled first day.

A 15% administrative fee will be deducted from all refunds.

Full refunds are only given if recreation center cancels a class or program.

There will be no refunds after the program has begun unless a class or sports league is changed or cancelled by the recreation center.

Please allow 6-8 weeks for the processing of all refund requests.



---

# Información de Registro

Las inscripciones al programa se aceptan por orden de llegada.

Se requiere el pago completo al momento de la inscripción.  
Un participante no se considera registrado hasta que haya recibido el pago completo.

Los pagos pueden realizarse en efectivo, cheque o tarjeta de crédito (solo Visa o Mastercard).

Por favor haga los cheques a nombre de la Ciudad de Los Ángeles.  
Al pagar en efectivo, indique el monto exacto.  
El personal de recreación no puede dar cambio.

Se cobrará una tarifa de cobro de \$35 por cada cheque devuelto.

La administración puede cancelar o combinar actividades si no se cumple la inscripción mínima.

Los horarios y fechas de clases están sujetos a cambios.

“Las personas con discapacidades son bienvenidas a participar en nuestras clases y programas. Se harán adaptaciones razonables con arreglos previos. Tenga en cuenta que algunas adaptaciones pueden tardar 30 días o más. Por favor, envíe su solicitud de adaptación lo antes posible” “Pago con cheque o giro postal solamente” y “Se cobrará una tarifa de cobro por cada cheque devuelto por el Banco” “Los reembolsos completos solo se emiten cuando el Centro de Recreación cancela la actividad. Se aplica una tarifa de cancelación del 15% para todos los reembolsos. Las clases y los programas puede estar sujeto a cancelación

---

## Politica de reembolso

Puede solicitar un reembolso antes del primer día programado del programa.

Se deducirá una tarifa administrativa del 15 % de todos los reembolsos.

Solo se otorgan reembolsos completos si el centro recreativo cancela una clase o programa.

No habrá reembolsos después de que el programa haya comenzado a menos que una clase o La liga deportiva es cambiada o cancelada por el centro recreativo.

Espere entre 6 y 8 semanas para procesar todas las solicitudes de reembolso.



---

# Volunteer Information

Give back to your community and make a difference in the life of a child.

Lou Costello Senior Citizen Center is seeking committed individuals that wish to dedicate time to assist in providing quality recreation.

Live scan fingerprinting and background checks are required.

For more information, please contact the main office at (323) 261-0113.



---

## Park Advisory Board

Park Advisory Boards (PABs) are essential to the overall operation of a recreation facility.

The partnership between staff and community members is of primary importance in identifying and meeting the recreational needs of the community.

A Park Advisory Board works to make facilities safe, clean and hospitable while offering guidance and assistance on programming and fundraising.

If you would like to join the Lou Costello Senior Citizen Center Advisory Board, please stop by the office for more information.

---

## Facility Rental

Facility usage permits are available for anyone (over 18 years old) interested in using the facility for meetings or personal usage such as birthday parties, baby showers and/or community events.

Request must be made at least 4-6 weeks prior to the event.

Facility rental payments may be made by cash, check, or money orders only and all fees must be paid in full at least 2 weeks prior to the start of the event.

---

## Filming

A film permit is required to make any commercial still photograph, commercial motion picture, television program, or similar production at a city park or recreation facility.

Please contact the Park Film Office for more information at (213)485-9143.

---

# Información para voluntarios

Contribuya a su comunidad y marque una diferencia en la vida de un niño.

Lou Costello Senior Citizen Center busca personas comprometidas que deseen dedicar tiempo para ayudar a brindar recreación de calidad.

Se requieren escaneos en vivo de huellas dactilares y verificación de antecedentes.

Para obtener más información, comuníquese con la oficina principal al (323) 261-0113.

---

## Asesora del Parque

Los Consejos Asesores de Parques (PAB) son esenciales para el funcionamiento general de una instalación recreativa.

La asociación entre el personal y los miembros de la comunidad es de primordial importancia para identificar y satisfacer las necesidades recreativas de la comunidad.

Un Consejo Asesor del Parque trabaja para hacer que las instalaciones sean seguras, limpias y hospitalarias mientras ofreciendo orientación y asistencia sobre programación y recaudación de fondos.

Si desea unirse al Consejo Asesor del Centro para Personas Mayores Lou Costello, por favor pase por la oficina para obtener más información.

---

## Alquiler de Instalaciones

Los permisos de uso de las instalaciones están disponibles para cualquier persona interesada (mayor de 18 años) en el uso de las instalaciones para reuniones o uso personal como fiestas de cumpleaños, baby showers y/o eventos comunitarios.

La solicitud debe realizarse al menos entre 4 y 6 semanas antes del evento.

Los pagos de alquiler de las instalaciones se pueden realizar únicamente en efectivo, cheque o giro postal. y todas las tarifas deben pagarse en su totalidad al menos 2 semanas antes del inicio del evento

---

## Filmacion

Se requiere un permiso de película para realizar cualquier fotografía comercial, película comercial, programa de televisión o producción similar en un parque de la ciudad o instalación recreativa.

Comuníquese con la Park Film Office para obtener más información en (213)485-9143.

---

# LOU COSTELLO SENIOR CENTER

Classes are from 10am-4pm

Please see schedule attached.



## Free Classes/ Classes Gratis

- Social Cafe/ Walk for Wellness
- Card Friendly
- Billiards
- Computer Lab
- Karaoke

## Low Cost \$1 Classes

- Chair Yoga
- Chair workout with Dumbbells
- Aerobics
- Dance

## Bingo:

**Check in at 10am; Games start 10:30am**

- **Tuesday & Friday's at 10 AM-11am and 12-1:30 PM**

## Loteria:

- **Mondays: 12:20-2:30 PM**
- **Tuesday, Thursday and Friday's: 2:30-4:30 PM**



# LOU COSTELLO SENIOR CENTER

Las clases son de 10 a.m. a 4 p.m.

Consulte el horario adjunto.



## Classes Gratis

- Café social/paseo por el bienestar
- Juegos amistosos con las cartas
- Billiards
- Laboratorio de Computación
- Karaoke

## Clases de bajo costo de \$1

- Yoga en silla
- Entrenamiento en silla con mancuernas
- Aerobics
- El Dazon

## Bingo:

- **El check-in es a las 10 am y comienza a las 10:30 am**
- **Tuesday & Friday's at 10 AM-11am and 12-1:30 PM**

## Loteria:

- **Lunes: 12:20-2:30 PM**
- **Martes, jueves y viernes: 2:30-4:30 PM**





# LOU COSTELLO SENIOR CITIZEN CENTER

3121 E. Olympic Blvd. Los Angeles, CA 90023

Phone:(213)485-9143

Email: COSTELLO.SENIORCENTER@LACITY.ORG

## Membership is \$5 per Month!

- Refreshments
- Access to Facility

Low-Cost  
Classes, \$1  
Each

Membership  
Includes  
Free Classes



1. Aerobics
2. Dance
3. Chair workouts  
with dumbbells
4. Chair Yoga

1. Walk for wellness
2. Karaoke
3. Card friendly games
4. Computer lab
5. Billiards

Bingo &  
Loteria

- Bingo:  
Tuesdays @ 9am-1pm  
Fridays @9am-11am
- Loteria:  
Mondays 12:30pm-2:30pm  
Tuesday & Thursdays &  
Fridays @ 2:30-4pm

### *Special Events Included*

\*Subject to Change

“Persons with disabilities are welcomed to participate in our classes and programs. Reasonable accommodations will be made with prior arrangements. Please be aware that some accommodations may take 30 days or longer. Please submit your request for an accommodation as soon as possible.” “Payment by Check or Money Order Only” and “A Collection Fee will be charged for each check returned by the Bank” “Full refunds are only issued when the Recreation Center cancels the activity. A 15% cancellation fee is assessed for all refunds.

The classes and programs may be subject to cancellation



REGISTER NOW  
SCAN QR CODE



# LOU COSTELLO SENIOR CITIZEN CENTER

3121 E. Olympic Blvd. Los Angeles, CA 90023

Teléfono:(213)485-9143

Correo electrónico:

COSTELLO.SENIORCENTER@LACITY.ORG

## La membresía cuesta \$5 por mes!

- Refrescos
- Acceso a las Instalaciones

Clases de bajo costo,  
\$1 cada una

La membresía incluye clases gratis



1. Aeróbicos
2. El Dazon
3. Entrenamientos en silla con pesas
4. Yoga en silla

1. Caminata por el bienestar
2. Karaoke
3. Juegos amistosos con cartas
4. Laboratorio de computación
5. Billir

Bingo y Loteria

- Bingo:  
martes & viernes @ 9am-1pm
- Loteria:  
lunes 12:30pm-2:30pm  
martes & jueves & viernes  
2:30-4pm

**eventos especiales incluidos**

\*sujeta a cambios

“Las personas con discapacidades son bienvenidas a participar en nuestras clases y programas. Se harán adaptaciones razonables con arreglos previos. Tenga en cuenta que algunas adaptaciones pueden tardar 30 días o más. Por favor, envíe su solicitud de adaptación lo antes posible” “Pago con cheque o giro postal solamente” y “Se cobrará una tarifa de cobro por cada cheque devuelto por el Banco” “Los reembolsos completos solo se emiten cuando el Centro de Recreación cancela la actividad. Se aplica una tarifa de cancelación del 15% para todos los reembolsos.

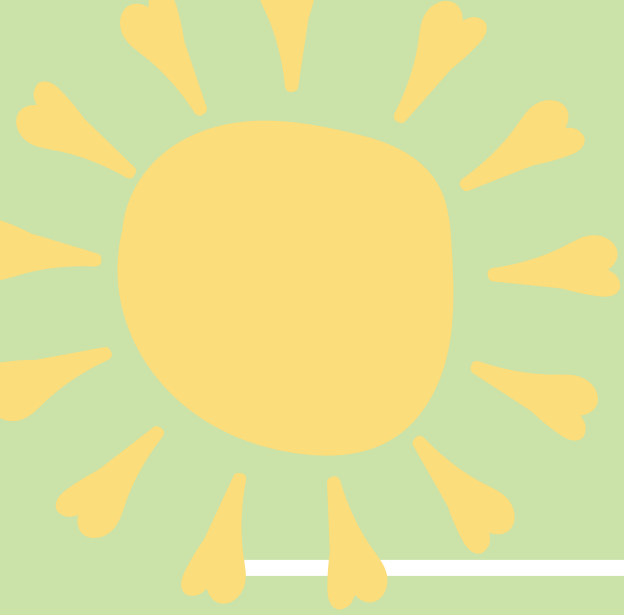
Las clases y los programas puede estar sujeto a cancelación



REGÍSTRATE AHORA  
ESCANEAR CÓDIGO QR







**SPRING '24**

# EVENTS

**2** APRIL TUESDAY

---

**SPRING EVENT**

**16** MAY THURSDAY

---

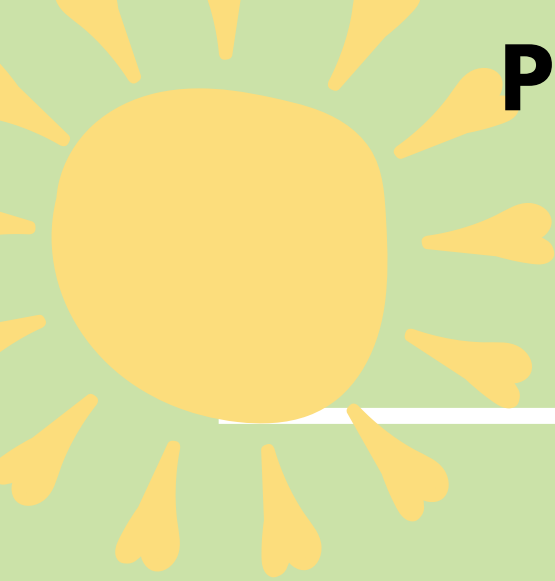
**MOTHER'S DAY EVENT**

**20** JUNE THURSDAY

---

**FATHER'S DAY EVENT**





**PRIMAVERA '24**

# EVENTOS

**2** ABRIL TUESDAY

---

PRIMAVERA EVENT

**16** MAYO THURSDAY

---

DIA DE LA MADRES

**20** JUNIO THURSDAY

---

DIA DEL PADRES

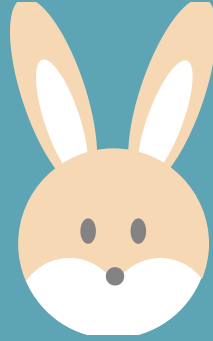


# Lou Costello Senior Citizen Center

3121 E. Olympic Blvd. Los Angeles, CA 90023

Phone: (213) 485-9143

Email: [COSTELLO.SENIORCENTER@LACITY.ORG](mailto:COSTELLO.SENIORCENTER@LACITY.ORG)



YOU'RE INVITED TO JOIN OUR

## *Spring Event*

TUESDAY, APRIL 2ND 10 AM TO 1 PM

DRINKS | RAFFLES | DANCE

\$5 DOLLARS FOR NON-MEMBERS

FREE FOR MEMBERS

FOOD WILL BE PROVIDED BY



"Persons with disabilities are welcomed to participate in our classes and programs. Reasonable accommodations will be made with prior arrangements. Please be aware that some accommodations may take 30 days or longer. Please submit your request for an accommodation as soon as possible." "Payment by Check or Money Order Only" and "A Collection Fee will be charged for each check returned by the Bank" "Full refunds are only issued when the Recreation Center cancels the activity. A 15% cancellation fee is assessed for all refunds. The classes and programs may be subject to cancellation"



REGISTER NOW  
SCAN QR CODE



# Lou Costello Senior Citizen Center

3121 E. Olympic Blvd. Los Angeles, CA 90023

Phone: (213) 485-9143

Email: [COSTELLO.SENIORCENTER@LACITY.ORG](mailto:COSTELLO.SENIORCENTER@LACITY.ORG)



ACOMPANENOS CELEBRAR

## Primavera Evento

MARTES, ABRIL 2ND

10 AM TO 1 PM

RIFAS | KARAOKE | BAILE

\$5 PARA PERSONAS SIN MEMBRESÍA / GRATIS PARA MIEMBROS

LA COMIDA SERÁ PROPORCIONADA POR CD14



"Las personas con discapacidades son bienvenidas a participar en nuestras clases y programas. Se harán adaptaciones razonables con arreglos previos. Tenga en cuenta que algunas adaptaciones pueden tardar 30 días o más. Por favor, envíe su solicitud de adaptación lo antes posible" "Pago con cheque o giro postal solamente" y "Se cobrará una tarifa de cobro por cada cheque devuelto por el Banco" "Los reembolsos completos solo se emiten cuando el Centro de Recreación cancela la actividad. Se aplica una tarifa de cancelación del 15% para todos los reembolsos. Las clases y los programas puede estar sujeto a cancelación"



REGÍSTRATE AHORA  
ESCANEAR CÓDIGO QR



# COSTELLO SENIOR CITIZEN CENTER

3121 E. Olympic Blvd. Los Angeles, CA 90023

Phone:(213)485-9143

Email: COSTELLO.SENIORCENTER@LACITY.ORG

# MOTHER'S DAY EVENT

\$5 dollars for non-members /  
Free for members  
\$5 para personas sin membresía  
/ Gratis para miembros



CD14 WILL PROVIDE  
ENTERTAINMENT  
CD14 PROPORCIONARÁ  
ENTRETENIMIENTO



**THURSDAY** **JUEVES**  
**16, MAY, 2024** **16, MAYO, 2024**  
**FROM 10AM TO 1PM** **DE 10AM A 1PM**



"Persons with disabilities are welcomed to participate in our classes and programs. Reasonable accommodations will be made with prior arrangements. Please be aware that some accommodations may take 30 days or longer. Please submit your request for an accommodation as soon as possible." "Payment by Check or Money Order Only" and "A Collection Fee will be charged for each check returned by the Bank" "Full refunds are only issued when the Recreation Center cancels the activity. A 15% cancellation fee is assessed for all refunds.

The classes and programs may be subject to cancellation



REGISTER NOW  
SCAN QR CODE





# Costello Senior Citizen Center

3121 E. Olympic Blvd. Los Angeles, CA 90023

Phone:(213)485-9143

Email: COSTELLO.SENIORCENTER@LACITY.ORG

# HAPPY FATHER'S DAY EVENT

# DIA DEL PADRE VENTO

Karaoke

Rifas

CD14 will  
provide  
entertainment

CD14  
proporcionará  
entretenimiento

**Kevin**  
**DE LEÓN**

Councilmember, 14th District



Dance  
Baile

RAFFLES  
Refrescos

\$5 for non-members /  
Free for members

\$5 para personas sin  
membresía  
/ Gratis para  
miembros

**FRIDAY 14, JUNE, 2024**

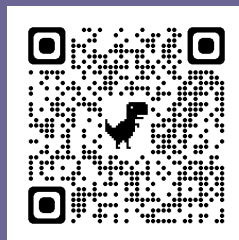
**FROM 10AM-1PM**

**JUEVES 20, JUNIO, 2024**

**DE 10AM-1PM**



REGÍSTRATE  
AHORA  
ESCANEAR  
CÓDIGO QR



REGISTER NOW  
SCAN QR CODE



"Persons with disabilities are welcomed to participate in our classes and programs. Reasonable accommodations will be made with prior arrangements. Please be aware that some accommodations may take 30 days or longer. Please submit your request for an accommodation as soon as possible." "Payment by Check or Money Order Only" and "A Collection Fee will be charged for each check returned by the Bank" "Full refunds are only issued when the Recreation Center cancels the activity. A 15% cancellation fee is assessed for all refunds. The classes and programs may be subject to cancellation

# LOU COSTELLO

## SENIOR CENTER

Spring  
2024

3121 E Olympic Blvd, Los Angeles, CA 90023

(213)485-9143

[COSTELLO.SENIORCENTER@LACITY.ORG](mailto:COSTELLO.SENIORCENTER@LACITY.ORG)

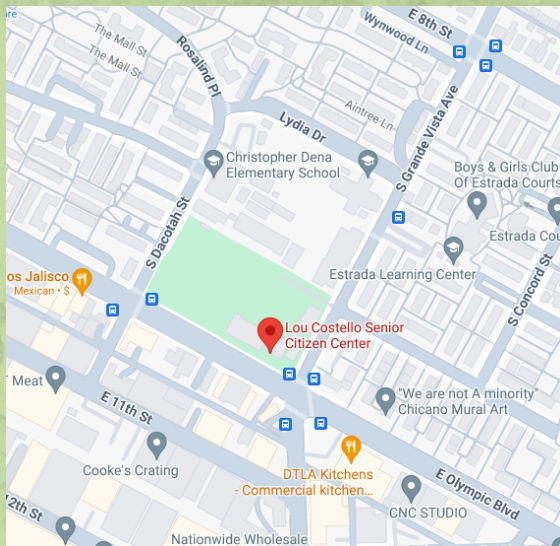
[www.laparks.org/reccenter/hollenbeck](http://www.laparks.org/reccenter/hollenbeck)



## OUR MISSION

Our mission is to enrich the lives of the residents of Los Angeles by providing safe, welcoming parks and recreation facilities and affordable, diverse recreation and human services activities for people of all ages to play, learn, contemplate, build community and be good stewards of our environment.

## LOU COSTELLO MAP



## OUR VISION

Our vision is to provide affordable recreational, physical and cultural opportunities for all of Los Angeles residents, with a focus on families, youth development and building healthy communities. The programs and services offered by the Department will provide excellent value and quality and emphasize the equitable distribution of resources throughout the city. We will offer these programs in safe, attractive and well-maintained facilities that will reflect the public's needs and interest.



# LOU COSTELLO

## SENIOR CENTER

Primavera  
2024

3121 E Olympic Blvd, Los Angeles, CA 90023

(213)485-9143

[COSTELLO.SENIORCENTER@LACITY.ORG](mailto:COSTELLO.SENIORCENTER@LACITY.ORG)

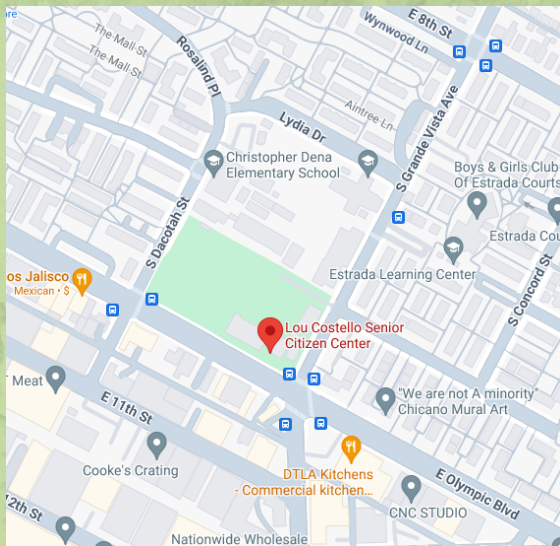
[www.laparks.org/reccenter/hollenbeck](http://www.laparks.org/reccenter/hollenbeck)



## NUESTRA MISION

Nuestra misión es enriquecer las vidas de los residentes de Los Ángeles proporcionando parques e instalaciones recreativas seguras y acogedoras y actividades recreativas y de servicios humanos diversas y asequibles para que personas de todas las edades jueguen, aprendan, contemplen, construyan una comunidad y sean buenos administradores de nuestro ambiente.

## LOU COSTELLO MAPA



## NUESTRA VISION

Nuestra visión es brindar oportunidades recreativas, físicas y culturales asequibles para todos los residentes de Los Ángeles, con un enfoque en las familias, el desarrollo juvenil y la construcción de comunidades saludables. Los programas y servicios ofrecidos por el Departamento brindarán excelente valor y calidad y enfatizarán la distribución equitativa de los recursos en toda la ciudad. Ofreceremos estos programas en instalaciones seguras, atractivas y bien mantenidas que reflejarán las necesidades e intereses del público.





# City of Los Angeles

## Department of Recreation & Parks



Karen Bass, Mayor  
Kevin De Leon, Councilmember 14th District

---

### **BOARD OF RECREATION & PARK COMMISSIONERS**

Renata Simril, President  
Luis Sanchez Vice President  
Fiona Hutton, Member  
Benny Tran, Member

---

### **RECREATION & PARKS ADMINISTRATION**

Jimmy Kim, General Manager  
Matthew Rudnick, Executive Officer & Chief of Staff  
Belinda Jackson, Assistant General Manager, Recreation Services Branch  
Brenda Aguirre, Assistant General Manager, Special Operations Branch  
Cathie Santo Domingo, Assistant General Manager, Planning, Construction & Maintenance Branch

---

### **METRO REGION**

Anita Meacham, Superintendent  
Kimberly Simonet, Principal Recreation Supervisor II  
Leslie Perez, Principal Recreation Supervisor I  
Carlos Alvarado, Recreation Supervisor, East District

---

### **LOU COSTELLO SENIOR CENTER**

Francisco Cerritos, Recreation Facility Director

#### Recreation Assistants

Yarida Blas, Jennifer Harvey, Cynthia Blas

---

### **MAINTENANCE STAFF**

Javier Solis, Superintendent, Park Maintenance Division  
Rafael Rodriguez, Park Maintenance Supervisor  
Rocio Ramirez, Gardener Caretaker  
Kasandra Maravilla, SPA II