

# LAKE STREET COMMUNITY CENTER

# SPRING DAY CAMP



**MARCH 26- 29**

**8:00AM-6:00PM**

\*Lunch not included\*



**REGISTRATION  
STARTS  
FEBRUARY  
26TH**

**Ages  
5-12 YEARS  
OLD**

Registration Fee &  
field trip

**\$70/ week**

Field Trip TBA



## Activities

- ✓ Games
- ✓ Snacks
- ✓ Arts & Crafts
- ✓ Field trip

**227 N. Lake Street, LA, CA 90026**

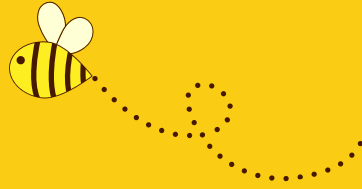
(213) 207-2196

**email:**

**lakestreetcommunitycenter@lacity.org**

Person with disabilities are welcome to participate in our programs. Reasonable accommodations will be made with prior arrangements. Please be aware that some accommodations may take 30 days or longer. Please submit your request for an accommodation as soon as possible."

Payment by exact cash/money order, Visa/Mastercard/ checks payable to: City of LA  
No full refunds unless league is canceled. A cancellation fee of 15% will be assessed for each refund.  
Program is subject to change or cancel without notice.



# LAKE STREET COMMUNITY CENTER

# CAMPAMENTO DE PRIMAVERA



26-29 DE  
MARZO  
8:00AM-6:00PM

\*Almuerzo No  
Incluido\*



Registracion  
Comienza  
26 de febrero

EDAD  
5-12

Incluye cuota de  
inscripción y excursión  
**\$70/ Semana**



## Activities

- ✓ Artes y Manualidades
- ✓ Juegos
- ✓ Aperetivos
- ✓ Excursión el miércoles

**227 N. Lake Street, LA, CA 90026**

(213) 207-2196

**email:**

**lakestreet.communitycenter@lacity.org**

Logrando la igualdad de genero a traves de un compromiso continuo con niñas y mujeres en los deportes  
Personas con discapacidad son bienvenidas a participar en nuestras clases y programas.  
Acomodaciones razonables serán hechas con arreglo previo.

Pago en efectivo/money order, Visa/Mastercard/ cheque pagable a: City of LA  
No hay reembolsos completos a menos que se cancele la liga. Se cobrará una tarifa de cancelación del 15% por cada reembolso.

El programa está sujeto a cambios o cancelaciones sin previo aviso.