



PLANTING

There are many groves of common and exotic plants and trees in the park and these consist primarily of Palms, Rubber trees, Deodar cedars, Eucalyptus and Olives, but there is a great wealth of unusual plant material throughout the entire park. The old Botanic Garden established in the 1890's still retains some fine specimens of exotic species, many of them famous for their large size.

After every rain, there is an upsurge of native grasses and small flowers in all areas of the park. There are large numbers of Toyon and, on the north slopes, small groves of native California Walnut may be seen. There are scattered groups of native shrubs throughout the park, but the general effect today is that introduced species outnumber native.

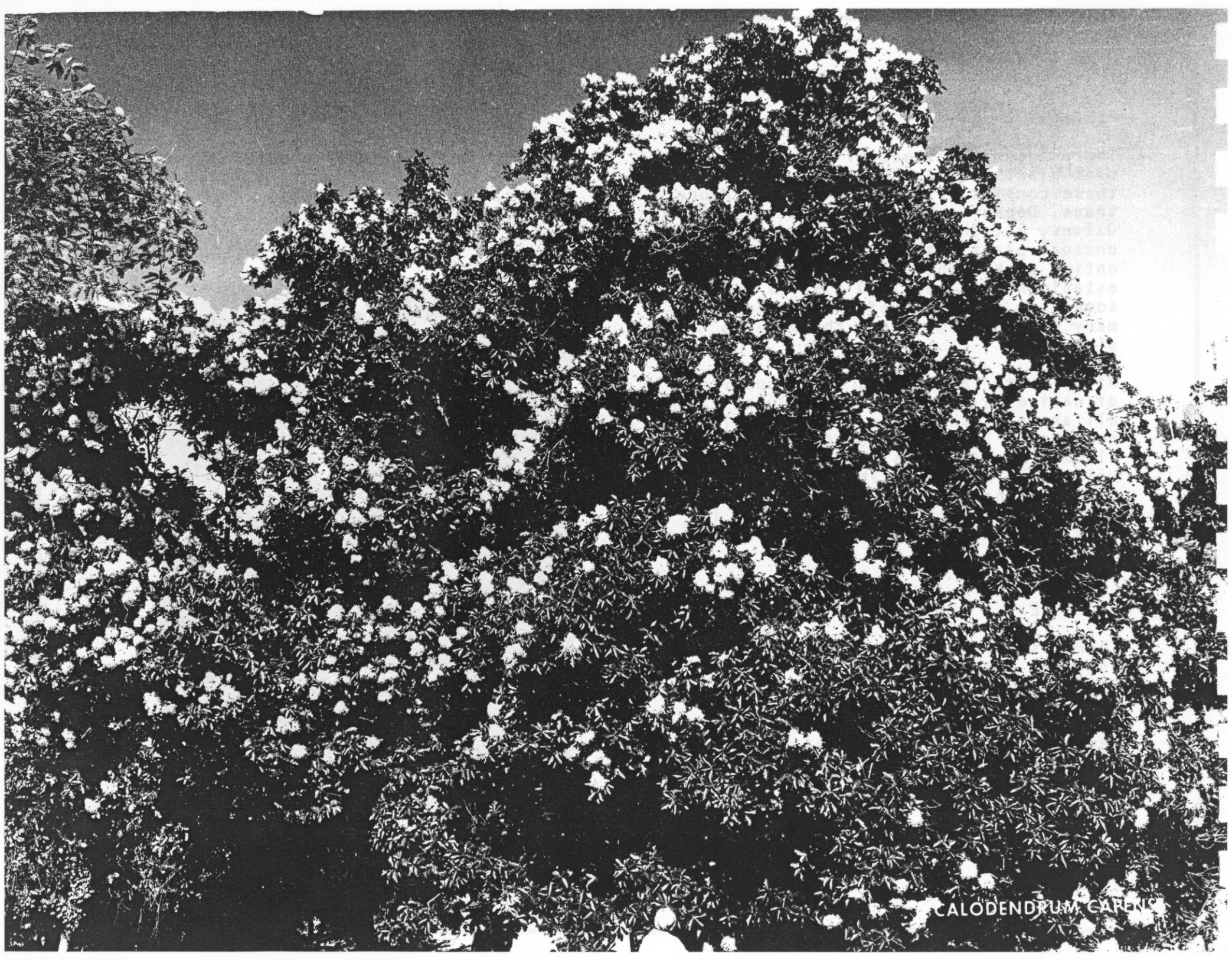
WILDLIFE

There is a wide variety of birdlife in the park now which consist of the more conspicuous natives such as hawks, jays, owls, quail, towhees and sparrows, to name a few. In addition to the permanent residents, there are sizeable flocks of migratory birds which appear here each year to rest and refresh themselves with food and water.

There is a substantial population of small native animals such as foxes, skunks, squirrels, rabbits, which generally keep to the more remote areas in the park.



DEODAR—MALE FLOWERS



CALODENDRUM CARENS