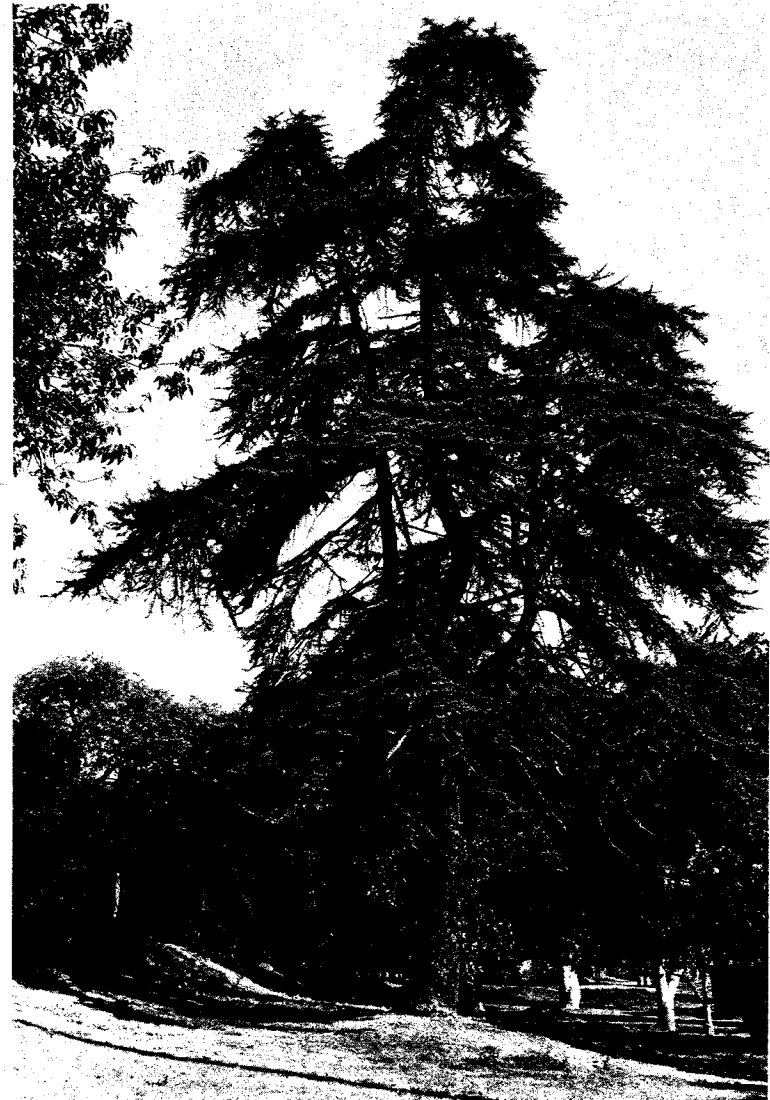


EXIST. TREES & SHRUB MASSES IN PARK (compiled by H.J. Teague 1971)

Acacia decurrens
(Green Wattle)
Acacia longifolia
(Bush Acacia)
Acacia melanoxylon
(Black Acacia)
Catalpa species
Cedrus deodar
(Deodar Cedar)
Ceratonia siliqua
(Carob)
Cupressus glabra sempervirens
(Arizona Cypress)
Cupressus macrocarpa
(Monterey Cypress)
Eucalyptus globulus
(Blue Gum)
Eucalyptus species
Ficus macrophylla
(Moreton Bay Fig)
Ficus species
Grevillea robusta
(Silk Oak)
Jacaranda mimosaeifolia
(Jacaranda)
Juglans californica
(California Black Walnut)
Magnolia grandiflora
(Southern Magnolia)
Olea europaea
(European Olive)
Phoenix canariensis
(Canary Island Date Palm)
Photinia arbutifolia
(Toyon)



CEDRUS DEODARA

Pinus canariensis
(Canary Island Pine)
Pinus halepensis
(Aleppo Pine)
Pinus pinea
(Italian Stone Pine)
Pinus radiata
(Monterey Pine)
Pittosporum undulatum
(Orange Pittosporum)
Prunus caroliniana
(Carolina Cherry Laurel)
Prunus lyoni
(Catalina Cherry)
Quercus agrifolia
(California Live Oak)
Quercus ilex
(Holly Oak)
Quercus lobata
(Valley Oak)
Quercus species
Rhus ovata
(Sugar Bush)
Sambucus glauca
(Blue Elderberry)
Schinus molle
(California Pepper)
Spartium junceum
(Spanish Broom)
Ulmus parvifolia
(Evergreen Chinese Elm)
Washingtonia filifera
(California Fan Palm)
Washingtonia robusta
(Mexican Fan Palm)

NOTE: This list compiled by Harold J. Teague during a survey of general masses of trees now existing in park. This list does not go into detail with respect to the botanic garden or isolated specimens.



CAPE CHESTNUT FLOWERS

EXISTING TREES IN ELYSIAN PARK (old list from Park Department)

Acacia cynophylla (Blue Wattle)	Cedrela australis (Cedrela)
Acer campestre (Hedge Maple)	Cedrus libanensis (Cedar of Lebanon)
Acer negundo (Box Elder)	Celtis australis (European Hackberry)
Acer paxii (Evergreen Maple)	Chorisia insignis (Samohu Chorisia)
Acmena smithii (Lilly-Pilly Tree)	Chorisia speciosa (Silk Floss Tree)
Agathis australis (Dammar Pine)	Cryptocarya rubra
Alectryon excelsum (Titoka Alectryon)	Cupaniopsis anacardioides (Cupannia)
Anogophora lanceolata	Cupressus guadalupensis (Guadalupe Cypress)
Araucaria bidwillii (Bunya Bunya)	Cupressus sempervirens (Italian Cypress)
Baphia chrysophylla (Camwood)	Dalbergia sisoo
Baphia racemosa (Bush Camwood)	Dovyalis caffra (Kei-Apple)
Bonita daphnoides (Barbados Olive)	Drypetes australasica (Drypetes)
Brachychiton acerifolium (Flame Bottle Tree)	Ehretia tinifolia (Cherry Ehretia)
Brachychiton populneum (Kurrajon Bottle Tree)	Enterolobium cyclocarpum (Earpod Tree)
Callistris cupressiformis (Drooping Cypressine)	Erythea edulis (Guadalupe Palm)
Callodendrum capense (Cape Chestnut)	Erythrina indica (Indian Coral Bean)
Calocedrus decurrens (Incense Cedar)	Ficus flomerata (Cluster Ficus)
Casimiroa edulis (White Sapote)	Ficus religiosa (Bottle)
Castanospermum australe (Moreton Bay Chestnut)	Fraxinus velutina (Arizona Ash)
Catalpa speciosa (Western Catalpa)	Hemicyclia australasica
	Hymenosporum flavum (Sweetshade)

<p> <i>Koelreuteria paniculata</i> (Golden Raintree) </p>	<p> <i>Quercus palustris</i> (Eastern Pin Oak) </p>
<p> <i>Luehea divaricata</i> (Common Whiptree) </p>	<p> <i>Randia megacarpa</i> (Randia) </p>
<p> <i>Macadamia ternifolia</i> (Queensland Nut) </p>	<p> <i>Rhamnus californica</i> (Coffeeberry) </p>
<p> <i>Mimosa biuncifera</i> (Catclaw Mimosa) </p>	<p> <i>Sassafras variifolium</i> (Sassafras) </p>
<p> <i>Phoenix reclinata</i> (Senegal Date Palm) </p>	<p> <i>Schinus hugin</i> </p>
<p> <i>Phoenix sylvestris</i> (Sugar Date Palm) </p>	<p> <i>Schinus latifolia</i> (Chilean Pepper Tree) </p>
<p> <i>Pinus canariensis</i> (Canary Island Pine) </p>	<p> <i>Schinus polygamus</i> (Tree Pepper) </p>
<p> <i>Pinus cembroides parryana</i> (Parry Pinyon Pine) </p>	<p> <i>Schotia latifolia</i> (Kafir Bean Tree) </p>
<p> <i>Pinus halepensis</i> (Aleppo Pine) </p>	<p> <i>Simmondsia californica</i> (Goat Nut) </p>
<p> <i>Pistacia chinensis</i> (Chinese Pistache) </p>	<p> <i>Sobotis latifolia</i> </p>
<p> <i>Pittosporum erioloma</i> (Lord. Howe Pittosporum) </p>	<p> <i>Syncarpia glomulifera</i> (Turpentine Tree) </p>
<p> <i>Pittosporum undulatum</i> (Victorian Box) </p>	<p> <i>Syzygium cuminii</i> (Jambolan Plum) </p>
<p> <i>Pleiogynium solandrii</i> (Burdekin Plum) </p>	<p> <i>Taxodium ascendens</i> (Pond Bald Cypress) </p>
<p> <i>Podocarpus taxifolia</i> (Yew Leaf Pine) </p>	<p> <i>Taxodium distichum</i> (Bald Cypress) </p>
<p> <i>Podocarpus totara</i> (Totara Podocarpus) </p>	<p> <i>Thuja occidentalis</i> (Eastern Arborvitae) </p>
<p> <i>Prunus lyonii</i> (Catalina Cherry) </p>	<p> <i>Tipuana tipu</i> (Tipu Tree) </p>
<p> <i>Psidium cattleianum</i> (Strawberry Guava) </p>	<p> <i>Tristania conferta</i> (Brisbane Box) </p>
<p> <i>Quercus alba</i> (American White Oak) </p>	<p> <i>Ulmus americana</i> (American Elm) </p>
<p> <i>Quercus cerris</i> (European Turkey Oak) </p>	<p> <i>Umbellularia californica</i> (California Laurel) </p>
<p> <i>Quercus imbricaria</i> (Shingle Oak) </p>	<p> <i>Washingtonia robusta</i> (Mexican Fan Palm) </p>
	<p> <i>Zelkova serrata</i> (Japanese Zelkova) </p>