


INFORMATIONAL BOARD REPORT

CITY OF LOS ANGELES
DEPARTMENT OF RECREATION AND PARKS

August 21, 2025

TO: BOARD OF RECREATION AND PARK COMMISSIONERS

FROM: JIMMY KIM, General Manager 

SUBJECT: VARIOUS COMMUNICATIONS

The following communications addressed to the Board have been received by the Board Office, and the action taken thereon is presented.

<u>From</u>		<u>Action Taken</u>
1. Jennifer Hunt comments regarding Reseda Triangle Park Renovation	#9938	Referred to General Manager
2. Lizeth G Benitez comments regarding Reseda Triangle Park Renovation	#9938a	Referred to General Manager
3. Jamie York comments regarding Reseda Triangle Park Renovation	#9938b	Referred to General Manager
4. Jamie York comments regarding Reseda Triangle Park Renovation (Community Impact Statement; Item Number: 2B. Reseda Park North Triangle Project)	#9938c	Referred to General Manager
5. Joy Boyajian comments regarding the Riverside Bridge Home Shelter	#9939	Referred to General Manager
6. Joy Boyajian comments regarding the Riverside Bridge Home Shelter	#9939a	Referred to General Manager
7. Dennis Chew comments regarding the Riverside Bridge Home Shelter	#9939b	Referred to General Manager
8. Unknown comments regarding the Riverside Bridge Home Shelter	#9939c	Referred to General Manager
9. George the Great comments regarding maintenance at Echo Park	#9940	Referred to General Manager

10. George the Great comments regarding maintenance at Echo Park	#9940a	Referred to General Manager
11. Sakae Koyama comments regarding Board Report #25-139: Echo Park Boathouse Café Concession	#9941	Referred to General Manager
12. Donald Rebhun comments regarding Fire Prevention in the West San Fernando Valley	#9942	Referred to General Manager
13. Shelly Morita comments regarding the Los Angeles Equestrian Center Operations & Horse Care	#9943	Referred to General Manager
14. Piper May comments regarding the Los Angeles Equestrian Center Operations & Horse Care	#9943a	Referred to General Manager
15. Stephanie Larrowe comments regarding the Los Angeles Equestrian Center Operations & Horse Care	#9943b	Referred to General Manager
16. Jackie Sparagna comments regarding the Lights at Whitnall Off Leash Dog Park Not Working	#9944	Referred to General Manager
17. Henry Barajas comments regarding the Lights at Whitnall Off Leash Dog Park Not Working	#9944a	Referred to General Manager
18. Lorena Davila comments regarding the Current Age Cut-off Policy for Youth Sports Enrollment	#9945	Referred to General Manager
19. Chris Cooley comments regarding Staff Harassment at Westchester Park	#9946	Referred to General Manager
20. Gabriel comments regarding Park Fee Vesting	#9947	Referred to General Manager
21. Ron Bitzer comments regarding Annual Report on Park Fees	#9948	Referred to General Manager

Prepared by Rosa Cartagena, RAP Commission Office



Rap Commissioners <rap.commissioners@lacity.org>

Re: Reseda Triangle Park Renovation

1 message

Rap Commissioners <rap.commissioners@lacity.org>

Wed, Aug 6, 2025 at 8:08 AM

To: Jennifer Hunt

Good morning,

Thank you for contacting the Board of Recreation and Park Commissioners Office, your email will be forwarded to the Commissioners

On Mon, Aug 4, 2025 at 10:53 AM Jennifer Hunt

wrote:

To whom it may concern,

My name is Jennifer Hunt Gudernatch, and I am a Reseda Resident. I am reaching out today because I am deeply disappointed at the plans that were released for the Reseda Triangle Park Renovation.

In the summer of 2022, I went to two separate gatherings where the community expressed their needs for the park- the overwhelming need was a splash pad for children to cool off in the hot summer months, a big grassy field for soccer games, and space for celebrations- like birthday parties and community events. Your current plan not only doesn't meet the needs of the community, it doesn't address them at all.

The drawing shows over half of the park becoming a storm water basin, eliminating necessary communal space. I know the importance of capturing storm water and how badly we need it, however over half the park is too much. Especially when we could look at the construction of the LA river and make it more sustainable.

Also as a mother, I fear the basins would become breeding groups for mosquitos. There are already mosquitos with west Nile in our area and this will cause such a risk for families attending the park.

There is still so much work that needs to be done to this plan to meet the needs of the community.

Jennifer Hunt Gudernatch



Rap Commissioners <rap.commissioners@lacity.org>

Re: Park renovation

1 message

Rap Commissioners <rap.commissioners@lacity.org>

Wed, Aug 6, 2025 at 8:05 AM

To: Lizeth G Benitez

Good morning,

Thank you for contacting the Board of Recreation and Park Commissioners Office, your email will be forwarded to the Commissioners

On Tue, Aug 5, 2025 at 11:26 AM Lizeth G Benitez

wrote:

To whom it may concern,

I am a San Fernando Valley Resident who frequents Reseda Park. I am reaching out today because I am deeply disappointed at the plans that were released for the Reseda Triangle Park Renovation.

During the planning process, the community expressed their needs for the park- the overwhelming concern was a splash pad for children to cool off in the hot summer months, a big grassy field for soccer games, and space for celebrations- like birthday parties and community events. Your current plan not only doesn't meet the needs of the community, it doesn't address them at all.

The drawing shows over half of the park becoming a storm water basin, eliminating necessary communal space. I know the importance of capturing stormwater and how badly we need it, however over half the park is too much. Especially when we could look at the construction of the LA river and make it more sustainable.

This water collection also increases the amount of mosquitos at the park, therefore increasing the community's exposure to West Nile Virus.

There is still so much work that needs to be done to this plan to meet the needs of the community.

Thank you for your time,

Lizeth Ceron
Sent from my iPhone



Rap Commissioners <rap.commissioners@lacity.org>

Re: Triangle Park- Reseda

1 message

Rap Commissioners <rap.commissioners@lacity.org>

Thu, Aug 7, 2025 at 12:22 PM

To: Jamie York

Good morning,

Thank you for contacting the Board of Recreation and Park Commissioners Office, your email will be forwarded to the Commissioners

On Wed, Aug 6, 2025 at 10:56 PM Jamie York

wrote:

Dear Mr. Sanchez and Ms. Lloyd,

I am writing regarding Item 2B on your task force agenda this week in my capacity as an individual stakeholder. I would come in person to give a comment, but unfortunately cannot since it is in person only and I have a medical matter that day. In July 2022, Reseda Neighborhood Council passed a community impact statement regarding these updates that noted there was significant community consensus for the installation of a splash pad. In fact, a splash pad was promised as part of the redesign by Councilmember Blumenfield's office. This was echoed at meetings held by MRCA at multiple community meetings. The plans on your agenda do not include a splash pad, but also present a significant deviation from community input.

I ask that you table this item or ask MRCA to return with a new plan that incorporates community input and how our park is currently utilized.

While I do not oppose water catchment and treatment, there are ways [to implement](#) these systems that do not require over 50% of our total park area. Furthermore, other stormwater mitigation efforts such as bioswales have been left unplanted and are trash gathering dirt pits along our sidewalks. This situation has persisted for over a year. Given that context, I am extremely worried about mosquito mitigation as well. *Aedes aegypti* can breed in a remarkably small amount of standing water and has been responsible for multiple cases of west Nile virus in our community.

This project needs to be informed by the needs of the entire community, The community engagement process only allowed the community to pick from 3 predetermined designs, even though many community members expressed discontent at any of the designs.

The plans on your agenda fundamentally do not serve the constituents of Reseda who rely on that park to function as a community backyard. On any given day, one will see multiple family gatherings and celebrations in Triangle Park. It is used for pick-up soccer games. The plans presented reduce the green space so dramatically in service of storm water capture. Only 23% of the park would be left for open space, less than the size of a small soccer field in total.

These concerns were [repeatedly expressed to MRCA](#), who have seemingly ignored the community input. In your own presentation on your agenda, it cites the top community wants as Multipurpose lawn(s), Gathering areas, Play areas, and Fitness areas, but this design would reduce the lawns to under 25% of the total park. It would force members of our community to lug chairs, tables and tents though the now added hilly areas. This area has traditionally been heavily used by our community for family gatherings and celebrations. So many in our neighborhood do not have backyards or common spaces available to them and the park is critical for that use.

I ask that you table this item or ask MRCA to return with a new plan that incorporates community input and how our park is currently utilized. Of the three total parks for Reseda's 70,000+ population, one of them is already devoted to storm water capture. I do not want to see this space used predominantly for that intent when our community so heavily relies on this park as a third space for gatherings. I am begging you to reject this design

and ask MRCA to return with a design that addresses community input. The design too severely impacts the current utilization of the park by our residents. It would have severe impacts on our community's well being.

Jamie York
Reseda NC (in my capacity as an individual)



Rap Commissioners <rap.commissioners@lacity.org>

Re: Your Community Impact Statement Submittal - Agenda Item Number: 2B. Reseda Park North Triangle Project

1 message

Rap Commissioners <rap.commissioners@lacity.org>
To:

Thu, Aug 7, 2025 at 1:55 PM

Good afternoon,

Thank you for contacting the Board of Recreation and Park Commissioners Office, your email will be forwarded to the Commissioners

On Wed, Aug 6, 2025 at 8:38 PM LA City SNow <cityoflaprod@service-now.com> wrote:

A Neighborhood Council Community Impact Statement (CIS) has been successfully submitted to your Commission or City Council. We provided information below about CISs and attached a copy of the CIS.

We encourage you to reach out to the Community Impact Statement Filer to acknowledge receipt and if this Community Impact Statement will be scheduled at a future meeting. Neighborhood Council board members are volunteers and it would be helpful if they received confirmation that you received their CIS.

The CIS process was enabled by the Los Angeles Administrative Code §22.819. It provides that, "a Neighborhood Council may take a formal position on a matter by way of a Community Impact Statement (CIS) or written resolution." NCs representatives also testify before City Boards and Commissions on the item related to their CIS. If the Neighborhood Council chooses to do so, the Neighborhood Council representative must provide the Commission with a copy of the CIS or resolution sufficiently in advance for review, possible inclusion on the agenda, and posting on the Commission's website. Any information you can provide related to your agenda setting schedule is helpful to share with the NC.

If the CIS or resolution pertains to a matter *listed on the Commission's agenda*, during the time the matter is heard, the designated Neighborhood Council representative should be given an opportunity to present the Neighborhood Council's formal position. We encourage becoming familiar with the City Council's rules on the subject. At the Chair's discretion, the Neighborhood Council representative may be asked to have a seat at the table (or equivalent for a virtual meeting) typically reserved for City staff and may provide the Neighborhood Council representative more time than allotted to members of the general public. They are also permitted up to five (5) minutes of time to address the legislative body. If the CIS or resolution pertains to a matter *not listed on the agenda*, the designated Neighborhood Council representative may speak during General Public Comments.

We share this information to assist you with the docketing neighborhood council items before your board/commission. If you have questions and/or concerns, please contact the Department of Neighborhood Empowerment at empowerla@lacity.org.

***** This is an automated response, please DO NOT reply to this email. *****

Contact Information

Neighborhood Council: Reseda

Name: Jamie York

Email:

The Board approved this CIS by a vote of: Yea(11) Nay(0) Abstain(0) Ineligible(0) Recusal(0)

Date of NC Board Action: 08/06/2025

Type of NC Board Action: Against Unless Amended

Impact Information

Date: 08/07/2025

Update to a Previous Input: No

Directed To: Board of Recreation and Park Commissioners, Community Forest Advisory Committee, Climate Emergency Mobilization Commission, Board of Neighborhood Commissioners, Board of Police Commissioners, Pedestrian Advisory Committee, Commission on Disability

Council File Number:

City Planning Number:

Agenda Date: 08/07/2025

Item Number: 2B. Reseda Park North Triangle Project

Summary: Reseda Neighborhood Council cares deeply about the development and care of our local parks. We have worked side by side with our regional park department to support programming such as movie nights and red card distribution for the community. We have advocated for council files that support the Parks Department and their mission. Their work is a fixture in our community's well being and it is part of why we are compelled to speak when we believe the proposed improvement to Reseda Park North (Triangle) fundamentally misunderstands how our community currently utilizes this park and what it needs to thrive. The Triangle Park in the northern part of Reseda Park is bisected by the Los Angeles River. With only three (3) total parks in Reseda, it is a vital community resource and space, and we consider it our community's backyard. On any given day, you can find members of the Reseda community utilizing the space for pick-up soccer or flag football matches, cooking and sitting at the picnic tables while celebrating events with families and friends, or walking their dogs and socializing with their neighbors. It is not uncommon to find many of our community members with families and friends celebrating a major event with food and games. It is an extremely well utilized park in our neighborhood as it is the only one that has restrooms. We request that MRCA, SWA, and RAP review our community input and offer a design that the Reseda community has repeatedly requested and needs. We need extensive green space for community and family gatherings like picnics, birthday parties and quinceaneras, and outdoor cooking. We need space for pick-up soccer or flag football games for our youth. We need space with shade for cooling. We need to retain the restrooms in any future proposals. The proposed design does not include restrooms and reduces the available green space for these activities more than 60%! We need SWA to consult with R Please see attached pdf for our full statement.



2B. Reseda Park – Reseda Park North (Triangle) Project

Position: **Oppose unless amended**

Dear Board of Recreation and Parks Commissioners,

Reseda Neighborhood Council cares deeply about the development and care of our local parks. We have worked side by side with our regional park department to support programming such as movie nights and red card distribution for the community. We have advocated for council files that support the Parks Department and their mission. Their work is a fixture in our community's well being and it is part of why we are compelled to speak when we believe the proposed improvement to Reseda Park North (Triangle) fundamentally misunderstands how our community currently utilizes this park and what it needs to thrive.

The Triangle Park in the northern part of Reseda Park is bisected by the Los Angeles River. With only three (3) total parks in Reseda, it is a vital community resource and space, and we consider it our community's backyard. On any given day, you can find members of the Reseda community utilizing the space for pick-up soccer or flag football matches, cooking and sitting at the picnic tables while celebrating events with families and friends, or walking their dogs and socializing with their neighbors. It is not uncommon to find many of our community members with families and friends celebrating a major event with food and games. It is an extremely well utilized park in our neighborhood as it is the only one that has restrooms.

The RNC greatly respects and appreciates the work and dedication of the Department of Rec and Parks (RAP) to invest in our community. The current proposal for the Triangle Park includes a few of the features expressly desired by Reseda residents - such as a main playground and pocket playground, fitness area, small native garden area with seating, and the replacement/addition of shade trees with beautiful Coastal Oaks.

However, we do not believe that the current design balances or maximizes ecological benefits with necessary public benefits. The input from our disadvantaged community was seemingly ignored by SWA and Mountains Recreation and Conservation Authority (MRCA) with this current proposal. According to SWA's presentation in your agenda, our community's priorities included multipurpose lawns, gathering areas, play areas, and fitness areas.¹ We heard these sentiments echoed in the three (3) public meetings conducted by MRCA² that we

¹ Meeting Agenda, City of Los Angeles DEPARTMENT OF RECREATION AND PARKS FACILITY REPAIR AND MAINTENANCE COMMISSION TASK FORCE Thursday, August 7, 2025 at 10:00 A.M. p 27 <https://www.laparks.org/sites/default/files/pdf/commissioner/MTFagenda/2025/REDUCED%20FRM%20Task%20Force%20Agenda%2008.07.pdf>

² 🇺🇸 Reseda Park Triangle Community Meeting – August 17, 2022



attended in August 2022. There was no further community engagement following these meetings, despite assurances that there would be further process.

Knowing that park improvements were coming, our Neighborhood Council began the process of collecting community data before these meetings, so that we could better advocate for our constituents. At the July 9, 2022 Getty 25 Art Fest, the Reseda Neighborhood Council collected comments from attendees to see what our constituents wanted for our neighborhood. By far, the top request was for the installation of a splash pad in Reseda Park. We registered 73 comments asking for the addition of a splash pad or water play feature from parents, children, and event goers³. We believe the desire for that amenity reflects the reality of the effects of climate change on the West Valley and inadequate public cooling places.⁴ Indeed, a splash pad/water play feature would be the only one in the Mid-Valley! These comments echo the recommendations of the LA County 2016 Park Needs Assessment for a splash pad to be installed in the Reseda area and also noted that most Reseda Park facilities were in state of fair or poor repair.⁵ Additionally, Reseda Neighborhood Council was promised a splash pad would be incorporated into the design for this park by CD3 Deputy Chief of Staff John Popoch.⁶

We believe the recent allocation of funding for improvements to the Triangle Park section of Reseda Park presents a unique opportunity to meet the wishes of our neighbors. We believe it should be explored if Measure W funding could be utilized to capture and recycle the water used by the splash pad to then be used for park irrigation. We believe the splash pad play area could also be Los Angeles River themed in keeping with the environmental education mission of the MRCA.

Despite an overwhelming amount of community support for a splash pad and/or interactive water features and open green spaces that sustain current community use, neither is present in the design. It is our contention that the proposed park designs prioritize storm water management over the people of Reseda who actually use the park.

Arroyo experience design

The selected “arroyo experience” particularly misunderstands how our community relies on this park. It reduces the social and cultural use of the park for our community in favor of an LA River revitalization plan. Of the only three (3) parks in Reseda, the Aliso Creek confluence

³ Comments collected by Reseda NC in 2022 included 73 for a splashpad, followed by 21 for more community gatherings/programming, and 15 for more trees. We continue to hear similar feedback in the present.

⁴ See attached image A

⁵ https://lacountyparkneeds.org/wp-content/root/FinalReportAppendixA/StudyArea_095.pdf

⁶ May 2, 2022 and August 17, 2022 emails with John Popoch “Im (sic) glad as we discussed that evening in the park that we’ll get the splash pad into the design. I want to help get the community’s voices heard so Im (sic) glad you attended and spoke along with others. It’s always been important to me to have a park that reflects the desires and needs of the community surrounding it which is what I was trying to convey in my comments to the other panelists when I mentioned you by name.”



park is already entirely dedicated to the purpose of storm water management; our next park, LAPD SWAT Officer Randal D. Simmons Park, offers no public restrooms. Thus it is Reseda Park that is used as our communal gathering space.

While we recognize the effects of climate change and while we are certainly not adverse to incorporating storm water management and filtration into the designs of the park, we would like the proposal to include comprehensive details in the plan for the water management system itself and how this fits into the overall Master Plan for stormwater management in the city of LA.

This proposal must be created in a way that still allows the community to use it as their “backyard.” Our constituents depend on this park for that purpose and the reduction in usable green space to less than 25% of the total square footage is not in line with what our residents have repeatedly told us they want for the park. The amount of green space remaining is less than one small soccer field in total, but each green space is significantly bifurcated, so none offer large play or communal areas. That is simply not enough to support the community’s current utilization of the park.

In the East Valley, LADWP has renovated parks with multiple underground storm water management facilities that do not impede the current use cases of their parks.⁷ Our Neighborhood Council would support similar smart construction such as this that maximizes ecological storm water management benefits with public benefits such as recreation.

The arroyo design also gives rise to significant concerns from the community regarding mosquito abatement and West Nile virus cases in the San Fernando Valley. Given that *aedes aegypti* can reproduce in even small amounts of standing water, we question whether an artificial wetland will worsen our existing problem with mosquito control.

The LAPD has repeatedly expressed concerns about the current design of the park when trees and shrubbery impede sightlines to the river edge. This proposal worsens those current concerns by prioritizing trees and shrubs along the entire street perimeter, which will offer no additional shade for the community, and will create a visual barrier that will make it more difficult for the LAPD to see what is happening in the park to ensure public safety.

After consulting with our local park employees there are also significant concerns regarding the size and location of the maintenance yard, the removal of the picnic tables and picnic area, and existence of a restroom. The proposal does not show any restroom placements on the rendering for the north side of the park which are a necessary resource and were listed as a chief concern of our residents to not remove them.⁸

⁷ <https://www.ladwp.com/community/construction-projects/other/stormwater-capture-parks-program>

⁸ Meeting Agenda, City of Los Angeles DEPARTMENT OF RECREATION AND PARKS
FACILITY REPAIR AND MAINTENANCE COMMISSION TASK FORCE
Thursday, August 7, 2025 at 10:00 A.M. p 27



While we support the addition of a playground and pocket playground, we are concerned about the placement of the playgrounds along the immediate street line. Speeding cars were listed as a major community concern⁹ and we do not think a playground immediately alongside the street line takes these concerns seriously.

There are also concerns with accessibility for those who are disabled related to the elevation changes of the boardwalk, limited entrances on Kittridge Avenue, and green spaces that are very far from street parking, which is already heavily impacted due to the high utilization and enjoyment of Reseda Park.

Additional concerns:

- It would also be valuable to understand the existing Reseda Park biome and how this proposal would affect the biome.
- “River Terraces” and a “River Outlook” that provides a view to a concrete river and the homeless encampments along the LA River? There is already a pedestrian bridge that spans between the South and North parts of the park and provides this “benefit.” These features are a waste of tax dollars, will not be utilized, and will not provide a valuable ROI for our community.
- We would like a reevaluation of the planting palette to ensure that all species used are California native. Currently, at least four listed species are non-native. Native plants are essential to restoring local ecosystems, conserving water, and supporting California’s unique wildlife, while also reducing long-term maintenance and the risk of fire.
- The planting palette doesn’t even include the eponymous [reseda odorata](#) flowering plant, of which Reseda was named for.

We request that MRCA, SWA, and RAP review our community input and offer a design that the Reseda community has repeatedly requested and needs. We need extensive green space for community and family gatherings like picnics, birthday parties and quinceaneras, and outdoor cooking. We need space for pick-up soccer or flag football games for our youth. We need space with shade for cooling. We need to retain the restrooms in any future proposals. The proposed design does not include restrooms and reduces the available green space for these activities more than 60%! We need SWA to consult with Reseda Park employees on the size and placement of the maintenance yard. We need SWA to consult with the LAPD on the safety concerns about tree and shrubbery placement, as well as the proposed location of the

<https://www.laparks.org/sites/default/files/pdf/commissioner/MTFagenda/2025/REDUCED%20FRM%20Task%20Force%20Agenda%2008.07.pdf>

⁹ Meeting Agenda, City of Los Angeles DEPARTMENT OF RECREATION AND PARKS
FACILITY REPAIR AND MAINTENANCE COMMISSION TASK FORCE

Thursday, August 7, 2025 at 10:00 A.M. p 27

<https://www.laparks.org/sites/default/files/pdf/commissioner/MTFagenda/2025/REDUCED%20FRM%20Task%20Force%20Agenda%2008.07.pdf>



playgrounds adjacent to the street.

In summation, we know that we can accomplish a design that balances ecological and recreational benefits as demonstrated by the successful design of the Valley Village and North Hollywood Parks in the East Valley. The Reseda Neighborhood Council vehemently rejects and does not support this proposal being advanced or approved until all of the aforementioned items have been adequately addressed to meet the needs of, and support the community of which we proudly serve.

This community impact statement was passed in a meeting held in accordance with the Brown Act on August 6, 2025 with a vote of 11 yes, 0 no, 0 abstain, 0 ineligible, 0 recused.

Cc: Councilmember Bob Blumenfield
Councilmember Nithya Raman
Mountains Recreation Conservancy Authority





Rap Commissioners <rap.commissioners@lacity.org>

Re: Sample letter to Rec & Parks Commission, the City Council and Mayor Bass

1 message

Rap Commissioners <rap.commissioners@lacity.org>

Wed, Aug 6, 2025 at 7:48 AM

To: JOY BOYAJIAN

Good morning,

Thank you for contacting the Board of Recreation and Park Commissioners Office, your email will be forwarded to the Commissioners

On Tue, Aug 5, 2025 at 7:31 AM JOY BOYAJIAN

wrote:

Dear Recreation & Parks Management and Commissioners, the Honorable Councilmembers and Mayor Bass of the City of Los Angeles,

On June 23rd, 2025, over 100 community members appeared before the Recreation & Parks (RAP) Commission with the intention of reiterating our collective desire to revive the south Griffith Park area, and to again call for the closure of the Riverside Bridge Home shelter in the southerly portion of Griffith Park.

There have been innumerable reports over the years to the RAP Commission by individuals and representatives of area groups about ongoing safety issues both inside and outside the Riverside Bridge Home shelter.

Given the lack of success of the shelter as an "interim" site (\$15M spent in 5 years with less than 8% of people having graduated from the program), and now, on the morning of July 5th, the death of a shelter resident and another former resident living outside in a van with his dog, I urge you to get every resident in the shelter housed immediately and sunset the facility.

The Los Feliz community was promised the revitalization of the south area of Griffith Park, via the south Griffith Park Master Plan that has been approved by City Council motion. This Master Plan for south Griffith Park is to include a new senior focused community center, the bathhouse and pool, as well as the pony rides and more, which is so exciting given the area has lied fallow for many years. I wish to reiterate my strong desire for the fulfillment of that promise to reinvigorate south Griffith Park for all Angelenos.

Should you wish to reach me, please email me at



Rap Commissioners <rap.commissioners@lacity.org>

Re: Bridge Housing Riverside Drive

1 message

Rap Commissioners <rap.commissioners@lacity.org>

Fri, Aug 8, 2025 at 7:33 AM

To: joy boyajian

Good morning,

Thank you for contacting the Board of Recreation and Park Commissioners Office, your email will be forwarded to the Commissioners

On Thu, Aug 7, 2025 at 5:59 PM joy boyajian

wrote:

August 7, 2025

To Recs & Parks:

Hello,

I am asking for the closing of the Bridge housing on Riverside Drive. When topic of opening it first came up I was for it; to have services there to help & place those in need. It's been a number of years now and I'm seeing a once stable community become unstable, filthy and with continual infrastructure damage. It's no longer an "unhoused" situation but a drug & crime situation. You may ask what my experience is. I live here & see what's happening; we have always had some homeless but they were never so destructive; I have 2 nephews - one who was on black tar heroin who only got clean when he was Incarcerated. The other is now a paranoid schizophrenic from meth use since age 9. You could scream in His face but his eyes were empty. He is now 40, has been institutionalized multiple times and will be on psych drugs for the rest of his life. It's heartbreaking & I see that In our community and on riverside Dr.

Two weeks ago my neighbor who stopped at Riverside Dr & Fletcher to get gas, was recently attacked by an unhoused man. If my neighbor hadn't been quick to move despite him being 81 years old, the man swinging the gas pump handle at his head would've killed him. Fortunately my neighbor put up his arm to protect himself. That attack was strong enough to break his arm. Recently a female Trader Joe's employee was attacked walking a block back to the store. Both attacks occurred within a week in broad daylight & unprovoked.

The Bridge housing was promised to be temporary . Let's remember the promise of the city for a new adult community center there. Many adults, elderly and low income people go to the current trailer location for their daily hot meal, to socialize, take classes and participate with others. The trailers are congested & dilapidated. This group has been patient long enough. They have paid their taxes, supported the community through the years and deserve proper care & attention as well. They also have needs.

It's time to reevaluate if we're really helping or perpetuating a situation and find an alternative to this issue vs staying with the status quo. If a medication or treatment plan does not work, then you look for a different medication or treatment plan that does work.

I would implore you to reassess the Bridge housing lease and close it. The community deserves no less . When I asked that neighbor, a retired emergency room MSW, to come to this meeting his response " toxic empathy is tyranny ".

Thank you,
Joy Boyajian

Sent from my iPhone



Rap Commissioners <rap.commissioners@lacity.org>

Re: August 8, 2025 General Public Comment - Item #5 - Riverside Bridge Housing Project

1 message

Rap Commissioners <rap.commissioners@lacity.org>

Fri, Aug 8, 2025 at 8:16 AM

To: D Chew

Good morning,

Thank you for contacting the Board of Recreation and Park Commissioners Office, your email will be forwarded to the Commissioners

On Thu, Aug 7, 2025 at 6:28 PM D Chew

wrote:

August 8, 2025

Rec & Parks Commission

221 N Figueroa Street, Suite 350

Los Angeles, CA 90012

Jimmy.Kim@lacity.orgRenata.Simril@lacity.orgLuis.Sanchez@lacity.orgMarie.Lloyd@lacity.orgBenny.Tran@lacity.orgRosa.Cartagena@lacity.org

RAP Commission Office

RAP.PublicInfo@lacity.orgRap-gpab@lacity.orgrap.commissioners@lacity.org

General Public Comment - Item #5 - Riverside Bridge Housing Project

Dear Rec & Parks (RAP) General Manager, Jimmy Kim; and RAP Commissioners (Ms. Renata Simril, Mr. Luis Sanchez, Ms. Marie Lloyd, and Mr. Benny Tran),

I am a long-time resident of Los Angeles, residing in Los Feliz, which is the entryway into Griffith Park. I am concerned with the poor progress with the Bridge Housing Program and the homeless issue. Due to circumstances which have come to light by the Press about the gross loss of funds going to the Homeless Shelters. I am disappointed that the homeless issue isn't being solved, especially at the Riverside Bridge Housing Project. In light of this situation, the Bridge Housing projects be transitioned and redirected, as well as its funds transferred to those facilities that are more successful sheltering projects. No more time or support should be given to the unsuccessful projects. The Riverside Bridge Housing Project is in Griffith Park and is still NOT a Park Use. And has not made a successful impact on health, safety, and positive procedures or transitioning individuals to housing. I have empathy and apprehension because they lack success within almost 4 years and has not significant in decrease its the population.

There are successful congregant shelter facilities and have housed their populations, thus reducing the unhoused. The Riverside Bridge Housing numbers have not shown a significant reduction in its numbers of participants. This Facility has not been effective and has affected the neighboring community. The success of using existing facilities can assist in reducing the participant numbers and increasing housing instead of continued "storing" these unhoused people. This project continues to have a fiscal effect on the area and should refund Recreation and Parks for the damages to the area surrounding the Mulholland Fountain.

This Southeastern portion of Griffith Park must be restored to its planned purpose as recreational use, which is the intent of this site per City Council ratified Griffith Park Master Plan and efforts of the previous Councilpersons. Restore the site with the promised replacement use: a Senior Center, Recreational Facility, Adult Community Center, a multi-use community facility.

I am trying to impress to this Commission the importance of replacing the Riverside Bridge Housing Project; because, its extended use is stopping the true intended use of this site, The Senior Adult Community Center, a multi-use community facility. This Senior Center was promised 15 years ago by City Councilmen Tom LaBonge and David Ryu. This site is intended for recreational use as part of the Park, not a housing project. This "temporary housing" has not lived up to its intent as well as being ineffective for its more than 3 1/2 years. Its time has been extended beyond its allowance but still has shown no positive progress. The Senior Adult Community Center has been promised to this City for the needs of this region; In 10 years Councilman Ed Reyes has brought to Los Angeles a park, Los Angeles State Historic Park, which was dedicated and established with landscape and equipped.

This Senior Center would be well used by the community as well as other City Departments that would use this future facility.

Park property is for recreational use and the Public's use for all Los Angeles, not so for special interest for just housing. I fear that the Bridge Housing continued use will become a permanent repository and is erasing the intended use of this property.

I support the Griffith Park Master Plan, June 23, 2025. A City Council motion was passed a year ago for a plan that was introduced in 2015 for the parkland and adjacent area of Los Feliz Blvd and Riverside Drive. It is Park land use, not housing the unhoused.

Los Feliz Neighborhood Council did a report (dated May 2025) based on a survey that called for the area pool and community center with meeting rooms and classes for the area, among other recreation-focused assets. And anyone interested in dog training classes was not addressed in the report.

Bridge Home shelter. \$15M spent in 5 years (operations only), approx. 8% housed, current operator under federal scrutiny for money expended with poor results. Various types of crime in the area continues, it's taxing police division that is often assigned to other areas. Where are the "ambassadors" that are to "police" the facility?

"In July 2023, Judge Milan Smith, Jr. of the U.S. 9th Circuit Court of Appeals wrote: 'There are stretches of the city where one cannot help but think the government has shirked its most basic responsibilities under the social contract: providing public safety and ensuring that public spaces remain open to all. One-time public spaces like parks - many of which provide scarce outdoor space in dense, working-class neighborhoods - are filled with thousands of tents and makeshift structures and are no longer welcoming to the broader community.'"

Thank you for this time,

Dennis Chew

The "California Housing First Policy" focuses on only one of the problems of the homeless. The Riverside Bridge residents are allowed to continue their drugging, their criminal acts, their lack of productivity, with NO REQUIREMENTS, for drug rehabilitation or mental health counseling. Plus, the homeless shelter has no curfew, & no external security.

So, the "Let's get high & party" scenario has simply moved from the streets of L.A. to the Riverside Bridge Shelter.

Furthermore, a neighbor recently told me that he was driving down Riverside Drive at 2:30 in the morning; & he saw a group smoking dope right outside the homeless shelter entrance.

Does this sound healthy & safe to you?

Unabashed fact--the truth--some drug users lie, cheat,

steal, & in some cases, even murder their fellow man.

All of this is just what we have experienced in Los Feliz-- formerly a safe neighborhood until the shelter was built.

All kinds of theft and crime now occur, and Richard Ware was even murdered across the street from the shelter, by a shelter resident.

* * * * *

to anyone else, but present company, warning bells would sound off, & policy change would occur!

* * * * *

It is sad to say but I feel the only way to affect change is to vote the unwavering & uncompromising idealogues out of office.

May the Lord God Almighty, bless you with knowledge, wisdom, insight & the willingness to do the right thing.



Rap Commissioners <rap.commissioners@lacity.org>

Re: Trash Echo Park Lake Kids Playground.

1 message

Rap Commissioners <rap.commissioners@lacity.org>

Fri, Aug 8, 2025 at 11:10 AM

To: George The Great

Good morning,

Thank you for contacting the Board of Recreation and Park Commissioners Office, your email will be forwarded to the Commissioners

On Wed, Aug 6, 2025 at 10:56 AM George The Great
Parks and Recreation Commissioners

wrote:

Your attention please. This request for better upkeep of the park is directed to you.

As you will see in the video below, there is a lot of trash around the park. On our previous request for service, we covered the boat rental area. This time we covered the kids' playground area.

The two, half way full trash cans were picked up by the park keeper 10 minutes after we recorded the video. We used the opportunity to ask the employee about all the trash around the park and the employee shared with us that there is ONLY one employee assigned to wash up 20 restroom stalls, collect all trash bags and that there is no more time to pick up trash from the floor or do anything else.

Commissioners, are we short on funding?

Are there any supervisors working on these days who could lend a hand and own the work due to lack of funding or hours issued to one worker. Why not give the worker overtime?

It's becoming a norm for Echo Park Lake to be trashed.

We have reported all the graffiti around the park. So far, no action has been taken. Not before, during nor after the Lotus Festival last year neither this year.

We count on you doing the right thing hoping to see supervisors and their subordinates keeping our parks clean.

We appreciate your response to this important matter.

Tax Payers
Community Members
Park Goers

<https://photos.app.goo.gl/JVAiRUUCmoznkVLk9>

<https://photos.app.goo.gl/ynBBcbiUJVWWax4v7>



Rap Commissioners <rap.commissioners@lacity.org>

Re: Public resources not in good use

1 message

Rap Commissioners <rap.commissioners@lacity.org>

Wed, Aug 13, 2025 at 7:35 AM

To: George The Great

Good morning,

Thank you for contacting the Board of Recreation and Park Commissioners Office, your email will be forwarded to the Commissioners and staff.

On Tue, Aug 12, 2025 at 6:17 PM George The Great

wrote:

<https://photos.app.goo.gl/qjM4sg7>

1UQNDyy

Sg8

City Commissioners,

Once again, the same employee we have reported before not doing what he is getting paid to do.

We stood there for a few minutes and he seemed not to be in a hurry to help clean the park.

There was a lady driving the golf cart picking up trash bags and the man didn't bother to assist her.

There is a big possibility that this public employee was on his break.

You will find out and do the correct thing.

On previous weekends there have been only one worker taking care of the the cleaning around the park.

Last Sunday, there were 3 people.

Tax Payers

Community Members

Park Goers

--

City of Los Angeles

Office of the Board of Recreation and Park Commissioners

Figueroa Plaza

221 North Figueroa Street, Suite 300

Los Angeles, CA 90012

Telephone: (213) 202-2640

Fax: (213) 202-2610

Mail Stop: 625/15

Website: www.laparks.org



Rap Commissioners <rap.commissioners@lacity.org>

Re: Echo Park Boat House tenancy

1 message

Rap Commissioners <rap.commissioners@lacity.org>

Thu, Aug 7, 2025 at 1:32 PM

To: Sakae321

Good afternoon,

Thank you for contacting the Board of Recreation and Park Commissioners Office, your email will be forwarded to the Commissioners

On Thu, Aug 7, 2025 at 12:37 PM Sakae321 <

wrote:

Good Afternoon Park Commissioners,

I was unable to attend this morning's Park Commission Meeting in Exposition Park.
I listened to the meeting over the phone re: item:

#25-139 Echo Park Boathouse Café Concession – Approval of Agreement for the Operation and Management of the Food and Beverage Concession – Categorical Exemption from the Provisions of the California Environmental Quality Act (CEQA) Pursuant to Article 19, Section 15301 [Operation, Repair, Maintenance, Permitting, Leasing, Licensing, or Minor Alteration of Existing Public or Private Structures, Facilities, Mechanical Equipment, or Topographical Features, Involving Negligible or No Expansion of Existing or Former Use] of California CEQA Guidelines as well as Article III, Section 1, Class 1(1) and Class 1(14) of City CEQA Guidelines

I am very glad to hear a RFP has been put in for a new tenant for the Echo Park Boat House and that it was approved today.

I wish them great success.

An unoccupied building is vulnerable to graffiti, blight, vermin, crime, and fire.

One thing that was left out of the discussion today was a major problem the previous tenant PIKNIK had during their short operation.

They had 5 break-ins between their opening on July 4th, 2024 - Oct 30, 2024 when the Dodgers won the World Series, resulting in significant losses and costs.

I've spoken to owner, Don Andes in person twice re: this issue.

Security is a big problem, in addition to the unfair competition from the presence of the many street vendors on the sidewalk, directly in front of the Boat House and INSIDE the Park, where illegal sales of alcohol has also been witnessed with regularity.

How many of the street vendors at or around Echo Park Lake are LEGALLY permitted with the City to do business, I do not know?

What I do know is they are not held to the same standards, or should I say ANY(?) standards with the City or Health Department.

While street vending may have been decriminalized in the State of California, it is not regulated in any meaningful way to prevent unfair competition or unsafe practices. The City and State simply do not have the resources to do enforcement.

It has been estimated that approximately 50K street vendors (10K of which are food) exist in Los Angeles, less than 1.4% have a valid operating permit to run their business.

That amounts to 687 valid permits TOTAL for the entire City of Los Angeles, I might mention at the ridiculously low cost of \$27.51 for a permit as of June 2024, when it was reduced from the initial cost of \$291 to the proposed \$541, ultimately landing at the \$27.51 cost.

At a time when the budget crisis is huge and your RAP Dept is being severely cut for staff and services, I do not know how this model is sustainable?

Thank you to Commissioner Lloyd for asking about the many nearby street vendors.

We cannot pretend the problem doesn't exist and the direct impact it has on the local economy and storefront businesses.

As a new member of the Lotus Festival Planning Committee, I am also deeply concerned about the impact of any "sanctioned" introduction of street vendors INSIDE the Park, taking up valuable public green spaces before, during and after the festival.

Echo Park Lake is the crown jewel of Los Angeles and has a historic designation.

We must treasure and protect this sacred space for the health of the wildlife and the vibrant community that surrounds it.

We must also put into protections to support the tenants your Department puts into the parks, so they have a fighting chance to succeed.

Thank you.

Humbly,

Sakae Koyama

🌳 Echo Park-Park Advisory Board President/PAB

🌸 Lotus Festival Planning Committee

🌲 FoEP/Friends of Elysian Park Co-President

💚 PEP/Preserve Echo Park Lake



Rap Commissioners <rap.commissioners@lacity.org>

Re: Fire prevention and Fire Safe Communities

1 message

Rap Commissioners <rap.commissioners@lacity.org>

Thu, Aug 7, 2025 at 1:43 PM

To: DONALD REBHUN

Good afternoon,

Thank you for contacting the Board of Recreation and Park Commissioners Office, your email will be forwarded to the Commissioners

On Thu, Aug 7, 2025 at 12:53 PM DONALD REBHUN

wrote:

Dear Commissioner Lloyd,

I am writing you for assistance regarding a concern for hundreds of residents in the West San Fernando Valley. With the tragic fires this past January and previous fires which have been in our communities, we are taking action to prepare and/or prevent further catastrophic loss of life and property. We have been meeting with the LAFD, MRCA, and the VCFD to get their recommendations and pass these to home owners throughout our area. We have also asked for assistance from Council member John Lee's office and the Mayor's office. I recently received an email from Myrka Martinez who is the deputy director for Councilmember's Lee's office who stated that the parcel in question was under an environmental designation and has different requirements and guidelines and under the jurisdiction of the Department of Parks and Recreation and am now reaching out to you. The parcel, which is probably 2+ acres, is significantly overgrown and has Palm Trees which have not had their dead fronds removed for years. With homes within a few hundred feet and a large open mountainous region it abuts, a fire could easily send embers igniting those homes as well as a nearby large community with over several thousand residents, should a fire break out.

If significant brush clearance, thinning of the tree overgrowth, and cutting of the dead palm leaves (fronds) is done soon, it may save our residents lives and property.

We look forward to hearing from you.

Sincerely,
Don Rebhun

Donald Rebhun, MD, MSPH

Sent from my iPhone
Without benefit of "spell check" so please excuse any typos.



OVERLAND DR

WASCASSET DR

GRAYSTONE DR
STONEGATE DR

ATHERTON LANE

WESTCLIFF DR

INDIAN HILL LANE

STARLIGHT LANE

HEAVENLY CT
PLUMTREE CT

CRABAPPLE CT

BELL CANYON ROAD

WOODGLADE LANE

FIELDMONT PL

FINSBURY LANE

GARDENSTONE LANE

CASTLE PEAK DR

HIGHLANDER ROAD

SHADE TREE LANE

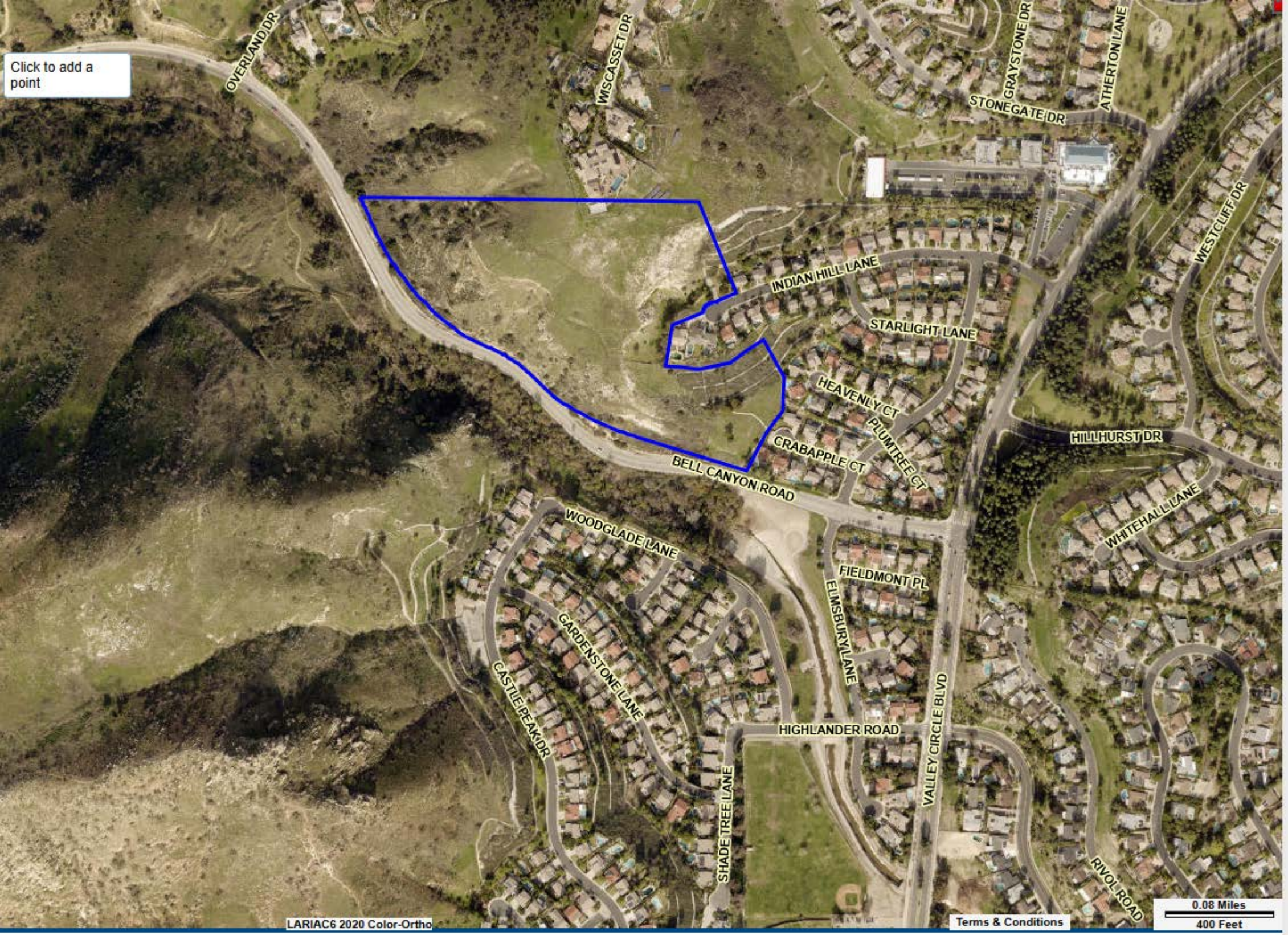
VALLEY CIRCLE BLVD

HILLHURST DR

WHITEHALL LANE

RIVOLI ROAD

Click to add a point















Rap Commissioners <rap.commissioners@lacity.org>

Re: LAEC Horse Welfare Crisis

1 message

Jimmy Kim <jimmy.kim@lacity.org>

Fri, Aug 8, 2025 at 10:51 AM

To: SHELLY MORITA , Brenda Aguirre <brenda.aguirre@lacity.org>

Cc: matthew.rudnick@lacity.org, Rap Commissioners <rap.commissioners@lacity.org>, mayor.helpdesk@lacity.org

Good Morning,

I am adding +Brenda Aguirre Assistant General Manager of the Special Operations Branch to provide an update as we work with ASM Global on this situation.

Thank you SO much

On Fri, Aug 8, 2025 at 10:50 AM SHELLY MORITA

wrote:

The Los Angeles Equestrian Center, home to over 500 horses, is overseen by you and operated by ASM Global. Recently, ASM fired 10 stall cleaners without providing replacements or a plan for ongoing care.

Today, all remaining workers went on strike. As of now, no horses have been fed and no stalls have been cleaned. Boarders have received no communication from ASM regarding the situation.

The welfare and safety of the horses are in immediate jeopardy. Urgent action is needed to ensure the animals receive proper care.

--

Jimmy Kim
General Manager

City of Los Angeles
Department of Recreation and Parks



Rap Commissioners <rap.commissioners@lacity.org>

Re: Los Angeles Equestrian Center Operations & Horse Care

1 message

Brenda Aguirre <brenda.aguirre@lacity.org>

Mon, Aug 11, 2025 at 10:18 AM

To: Piper May

Cc: "jimmy.kim@lacity.org" <jimmy.kim@lacity.org>, "matthew.rudnick@lacity.org" <matthew.rudnick@lacity.org>, "rap.commissioners@lacity.org" <rap.commissioners@lacity.org>, "mayor.helpdesk@lacity.org" <mayor.helpdesk@lacity.org>

Dear Ms. May,

Thank you for taking the time to share your detailed account of what occurred on August 9 at the Los Angeles Equestrian Center. I can hear in your words the deep concern you and others feel — not only for the horses' well-being, but also for the sense of trust and communication between boarders, trainers, and management.

First and foremost, I want to acknowledge the distress that this situation caused for you and the broader LAEC community. The welfare of the horses and the safety of those who care for them are of the utmost importance, and I understand how unsettling it must have been to experience a disruption in daily operations, particularly without timely communication.

We are reviewing the circumstances surrounding the staffing changes and the response that followed to better understand where communication and contingency planning fell short. Your feedback, along with that of others, will be part of this review so that we can address these gaps and work toward rebuilding trust.


I appreciate you bringing these concerns forward with such detail. While it may not undo what happened, it is my commitment to ensure these concerns are heard and acted upon. I will be following up with LAEC management to address both the immediate issues and the longer-term need for clear, transparent, and proactive communication with boarders and trainers.


Thank you again for your dedication to the horses and for speaking up on behalf of the community.

Sincerely,

Brenda D. Aguirre, MPA*Assistant General Manager*

City of Los Angeles | Department of Recreation & Parks

Special Operations Bureau
 (213) 202-2633

 221 N. Figueroa St. Suite 350, Los Angeles, CA 90012

 [LAParks.org](https://laparks.org) | [SwimLA.gov](https://swimla.gov)

On Sun, 10 Aug 2025 at 19:06, Piper May

wrote:

On Friday morning August 9th 2025 several employees of the Los Angeles Equestrian Center were terminated. There was no prior correspondence informing Boarders and Trainers that this would be happening and that there might possibly be interruptions in operations.

This letter is in response to the email received by Boarders and Trainers from the LA Equestrian Center Management Team which addresses statements made by LAEC management. Please refer to the email below.

Myself and several other boarders find this correspondence regarding the situation which arose early Friday morning August 8th, 2025 to be most insincere, disingenuous, and misleading. Management was nowhere to

be seen nor heard from until after 3:00 PM and then we only received this inaccurate email.

In this email, there was no mention 10 employees were let go, they did not voluntarily resign. Several other employees on the chopping block stood in solidarity with their fellow employees who were now out of a job. It was my understanding that the dismissed employees had an appointment at 8:00 AM to collect their final paycheck. These employees went to the management office at 8:00 AM and were confronted with locked doors. Since these doors were locked it is assumed that management was fully aware of what was taking place. There was no contingency plan to replace the 10 employees who were dismissed. There was no contingency plan to ensure the horses, their safety and environment were taken care of.

The horses who are fed hay cubes in the DEF barns are normally fed around 7:00 AM and by 8:00 AM it became apparent no one was coming to feed them. The only reason these horses were fed Friday morning was because Carlos (who works for the Traditional Equitation School) and Fidel (who is employed by several Boarders to care for their personal horses) took it upon themselves to get the feed cart, load it with cubes and feed them. The ABC barn's horses were fed by the trainers and their employees.

As far as the horses having access to water; not every horse will drink from the automatic waterers. Some horses will only drink from their water buckets. Some horses in the ABC barns do not have auto waterers. Our community of trainers and boarders ensured all horses had water.

Cleaning the stalls had still not been arranged by 3:00 PM. The individual boarders were not about to let our horses stand all day in an unhealthy environment of manure and wet shavings with flies all around. So we took it upon ourselves way before 3:00 PM to clean our own horse stalls to provide them with a healthy environment. The ABC barn's horse stalls were cleaned by the trainers and their employees. The only people who came to help were Robert Mc Neel, Stabling Manager and Sal Hirsch, Operations Administrative Manager to distribute stall shavings to ABC and DEF barns, unfortunately by the time they arrived at DEF many stalls had already been completed by boarders.

Horses are not human beings, they cannot fend for themselves. Management was conspicuously absent all day Friday. It was the Boarders, Trainers, grooms, and other personnel that came to our horse's rescue without any help, input or communication from Management. I do not know if the Polo Barns at LAEC were effected.

The arenas not being timely and routinely maintained puts our horses at risk of injury due to poor footing, lack of proper exercise and mental stimulation horses need on a daily basis.

In other companies, when personnel become unavailable, management steps in to ensure operations run as smoothly as possible, we did not observe this at all. In fact, management was no where to be seen, they were behind locked doors, and we did not hear from management until late afternoon and this was only by a falsely worded email. Management should have been out there feeding the horses, mucking stalls, filling water buckets, and Yes, even cleaning the restrooms. Management should have been out there COMMUNICATING with us. This lack of communication has created a great deal of anger and resentment, which could have been lessened early on by truthfully communicating with us. As of this hour, there has been no further communication from the management of LAEC.

Regardless of what management professes and assures us that the health and well-being of every horse on site remains their top priority, they have failed miserably. They have not demonstrated any commitment to keeping us informed nor that the boarders, trainers, horses, and team members remain at the heart of LAEC management. Their actions/inactions say differently. This management team needs to be replaced with competent personnel who know how to run an equestrian facility, know how to make horses their top priority and know how to communicate.

Sincerely,

Piper May, Boarder at the Los Angeles Equestrian Center

----- Forwarded Message -----

From: Los Angeles Equestrian Center

To:

Sent: Friday, August 8, 2025 at 03:14:44 PM PDT

Subject: Important Update on LAEC Operations & Horse Care



Dear LAEC Boarders and Trainers,

We want to update you on current operations at the Los Angeles Equestrian Center following the unexpected resignations of several site crew members today. Please be assured that the health and well-being of every horse on site remains our top priority.

- All horses were fed this morning. Arrangements are in place for all remaining feedings
- All horses have access to water
- Stall cleaning is being arranged but may be delayed today. Regular stall cleaning will resume tomorrow
- Arena dragging will be scheduled as resources allow and may be temporarily delayed or reduced

Our Operations Team is managing the situation as quickly and effectively as possible in close coordination with the City of Los Angeles Department of Recreation and Parks. We have been in active communication with our site crew to provide them with information and options and we are assessing all available resources to ensure continuity of care.

We are committed to keeping you informed as more details become available. This community, our boarders, trainers, horses, and team members remain at the heart of all we do. We thank you for your patience, support and understanding as we work through this transition.

LA Equestrian Center Management Team

Visit our website, reach out, and follow us on social media!

On-site Security for Emergencies, call or text: (747) 688-2678

Los Angeles Equestrian Center Office: (818) 840-9063

[Check out our upcoming events](#)



Rap Commissioners <rap.commissioners@lacity.org>

Re: Petition for LAEC Muckers/ Essential Workers

1 message

Rap Commissioners <rap.commissioners@lacity.org>

Tue, Aug 12, 2025 at 9:40 AM

To:

Good morning,

Thank you for contacting the Board of Recreation and Park Commissioners Office, your email will be forwarded to the Commissioners

On Tue, Aug 12, 2025 at 9:33 AM

wrote:

Dear Mr. Kim,

I am writing to express my deep concern and disappointment regarding the recent dismissal of essential workers at the Los Angeles Equestrian Center (LAEC). The handling of this situation was, in my view, both abrupt and disrespectful to the long-serving staff and the broader LAEC community.

Many of these workers have dedicated over 20 years of service to the care and well-being of the horses and the maintenance of the facility. Their sudden termination has not only disrupted their personal and family lives but has also had an immediate negative impact on the horses who relied on their daily care.

Equally troubling is the lack of communication to horse owners and boarders. We were not informed in a timely manner, which jeopardized our ability to ensure proper care and oversight of our animals. The welfare of the horses must remain a top priority, and the current situation puts that at risk.

In light of this, I would appreciate your response to the following:

1. **Do these essential workers qualify for an agricultural worker petition program**, given their role in the direct care of horses and maintenance of an equine facility?
2. **Will you consider supporting or initiating such a petition** on their behalf to help reinstate or protect these valued members of the LAEC community?
3. Is California really a sanctuary city? If so how does that help these hardworking essential minimum wage undocumented workers?

I urge you to take immediate action to address the consequences of this decision and to work toward a resolution that respects the dedication of these workers and the needs of the horses.

Thank you for your attention to this matter. I look forward to your prompt response.

Sincerely,
Stephanie Larowe
Boarder at LAEC

--

City of Los Angeles
Office of the Board of Recreation and Park Commissioners
Figueroa Plaza
221 North Figueroa Street, Suite 300
Los Angeles, CA 90012



Rap Commissioners <rap.commissioners@lacity.org>

Re: Whitnall off leash lights not working

1 message

Rap Commissioners <rap.commissioners@lacity.org>

Wed, Aug 6, 2025 at 8:06 AM

To: Jackie Sparagna

Good morning,

Thank you for contacting the Board of Recreation and Park Commissioners Office, your email will be forwarded to staff.

On Tue, Aug 5, 2025 at 8:52 PM Jackie Sparagna

wrote:

Hi,

The lights at the whitnall off leash dog park in north hollywood dont work. Its pitch black at 7 30 pm. Can you please have someone come fix these lights?

Thanks,

Jacqueline Sparagna, Esq.

IMPORTANT: The contents of this email and any attachment are confidential. They are intended for the named recipient(s) only. If you have received this email by mistake, please notify the sender immediately and do not disclose the contents to anyone or make copies thereof.



Rap Commissioners <rap.commissioners@lacity.org>

Re: Whitnall Dog Park Broken Light

1 message

Rap Commissioners <rap.commissioners@lacity.org>

Thu, Aug 14, 2025 at 7:48 AM

To: Henry Barajas

Good morning,

Thank you for contacting the Board of Recreation and Park Commissioners Office, your email will be forwarded to the Commissioners and staff.

On Wed, Aug 13, 2025 at 9:14 PM Henry Barajas

wrote:

The main light at the north end of Whitnall is broken. It's intermittent and randomly turns on and off. It is not triggered by motion. It may be shorting out or over heating. I've been coming here for the last 2 years and this hasn't been an issue until the last 4-6 months. It makes the park feel very unwelcoming and it draws an unwanted element of sketchy people. It would be great to have the light fixed so the people with late schedules will feel safe and comfortable to come at later times. Thank you

--

City of Los Angeles
Office of the Board of Recreation and Park Commissioners
Figueroa Plaza
221 North Figueroa Street, Suite 300
Los Angeles, CA 90012

Telephone: (213) 202-2640
Fax: (213) 202-2610
Mail Stop: 625/15
Website: www.laparks.org



Rap Commissioners <rap.commissioners@lacity.org>

Re: SUGGESSTION FOR REGISTRATION FOR CHILDREN SPORT ACTIVITIES

1 message

Rap Commissioners <rap.commissioners@lacity.org>

Fri, Aug 8, 2025 at 10:36 AM

To: "L. Davila"

Good morning,

Thank you for contacting the Board of Recreation and Park Commissioners Office, your email will be forwarded to the Commissioners and staff.

On Tue, Aug 5, 2025 at 10:12 AM LA Parks Public Information <RAP.PublicInfo@lacity.org> wrote:

Hello Rap Commissioners,

Please see the forwarded email below.

If you are not the right department to follow up with please advise where I should redirect this email.

Thank you,

Caro

----- Forwarded message -----

From: **Lorena Davila**

Date: Mon, Aug 4, 2025 at 8:50 PM

Subject: SUGGESSTION FOR REGISTRATION FOR CHILDREN SPORT ACTIVITIES

To: <RAP.PUBLICINFO@lacity.org>

Dear Parks and Recreation Center:

I hope this message finds you well. I'm writing as a concerned parent regarding the current age cut-off policy for youth sports enrollment.

My son, born on March 6, 2020, is eager and ready to participate in sports like soccer and T-ball. Unfortunately, due to the existing age cut-off rules, he is not eligible to join a team this season. As a result, he would either have to wait an entire year or be grouped with much younger children, which doesn't accurately reflect his age or developmental level.

This policy seems to unfairly impact children born just after the cut-off date, placing them at a disadvantage through no fault of their own. It's disheartening for both the kids and their families, especially when many children are ready and excited to engage, learn, and be part of a team with their true age peers.

I respectfully ask that this policy be reviewed with consideration for children like my son. Perhaps implementing a more flexible age range or allowing case-by-case evaluations could create a more inclusive and fair experience for all children.

Thank you for your time, and I appreciate your attention to this matter. I would be happy to discuss this further or offer any input as a parent directly affected by this policy.

Sincerely,
Lorena Davila



Rap Commissioners <rap.commissioners@lacity.org>

Re: Westchester Park Staff Harassment

1 message

Rap Commissioners <rap.commissioners@lacity.org>

Fri, Aug 8, 2025 at 1:43 PM

To: Chris Cooley

Good afternoon,

Thank you for contacting the Board of Recreation and Park Commissioners Office, your email will be forwarded to the Commissioners and staff.

On Sun, Aug 3, 2025 at 12:52 PM Chris Cooley
Councilwoman Park,

wrote:

First, thank you and your team for all you do for CD 11. There has been great improvement in the area under your leadership.

My name is Chris Cooley, I'm a 42 year resident of Playa Del Rey (PDR). Born and raised, attended our local schools and graduated from LMU. I'm a Certified Public Accountant in our community and an avid tennis player.

I began my tennis career learning from my father at Westchester Park's tennis courts. After years of learning as a small child, my parents signed me up for tennis lessons offered by the coaches at Westchester Park's tennis courts. Fast forward 20 years, I have two young daughters of my own and am still a regular tennis player.

My daughters showed interest in tennis just like I did. I've been taking them to Westchester Park's tennis courts every weekend since 2017. Once they turned 4, I signed them up for lessons at the park just like my parents did for me. Both of my daughters take paid lessons at Westchester park 2-3 days per week.

On the weekends, I come to Westchester park to play tennis with them. Since last year, there has been a dramatic change in the management of the tennis courts. During my paid reservations, I am being harassed by park staff. They come onto my court and tell me that teaching of any kind is prohibited. I inform them I am not a paid coach, I am simply teaching my 4 year old daughter how to play tennis. She is not old enough to stand on the opposite side of the court and rally with a grown adult. So I am on the same side of the court as her, showing her how to hold a racquet and the fundamentals of tennis form.

Last year my encounter with parks staff was horrible. They told me I can't be on the side with my daughter as that constitutes teaching. It does not matter that she is my kid and I'm not a paid coach. I told them respectfully that I paid for the hour of court time and am going to play with my daughter for the time I paid for.

The park staff called LAPD to report me for trespassing. My daughter was present when the staff spoke to me like this and started crying, afraid her father was going to jail for playing tennis with her. The staff person then placed a ban on my online account so I could no longer make reservations to play tennis at Westchester Park (my banned account is this email address).

After this instance, I spoke to LMU and signed up for a paid membership since I am an alumni. It's been the best decision and I had one year of harassment free tennis with my children. Unfortunately for 3 weeks each August, LMU dedicates their sports facility to our LA Rams training camps - so their tennis courts are not available and I'm relegated to Westchester Park.

In order to try to play again at Westchester Park during these 3 weeks that LMU is unavailable, I had to ask a family member to book tennis court time as my account is banned. I came to the tennis courts this weekend and within the first 20 mins of playing with my daughter, I was yet again approached by Parks staff and informed I cannot teach my child how to play. The staff

person stood at the fence beside my court and watched to see if I walked onto the same side as my child to provide her instruction.

I was advised if I gave her coaching or assistance again, the account associated with my reservation would be banned. Again, my daughter became fearful and started to cry as she recalled the instance from last year when LAPD was called.

I am requesting assistance with how I can best attend a parks public forum, to formally raise this issue and affect a meaningful change in the park's application of rules and regulations. I'd like to work together to ensure families are not harassed and threatened in front of their children.

I appreciate the "no teaching" rule at the parks is to prohibit non-permitted individuals from charging people for tennis lessons without being properly vetted and approved by the parks governing body. However the application of this rule to parents and their children on the tennis courts is misplaced, and destroys the fabric of what we should be doing with our children.

I see parents teaching their kids how to play basketball, soccer and baseball at Westchester park. I see parents teaching their children how to climb on the play yard. I see parents teaching their children how to skateboard at the skate park. There is no prohibition of any kind for these interactions because there are no paid reservations for these activities.

However, because I pay for an hour of tennis and want to use that time to pass along to my kids the same experiences shared to me by my parents - I am somehow under scrutiny, being banned from reservations and being threatened by the staff for trespass. All of the park coaches know me and my family (as we are in multiple paid lessons a week). This is a ridiculous application of a rule designed to prevent paid professional coaching. The staff are ill-equipped for rational community based thinking.

The staff actions are anti-community, anti-family and prejudice against parents who choose to teach their children tennis instead of any of the other available facilities at the park for which there is no such rule or staff policing.

I respectfully request your immediate assistance with this matter. I am willing to attend a public forum and raise these concerns as well. I would appreciate your input on how I can best navigate the various government bodies and procedures necessary to affect change. In a few weeks, I will be back to LMU and will not experience this harassment until next summer.

However, I feel a moral responsibility to pursue this further in hopes other families due not encounter this same treatment.

Respectfully,

Chris Cooley, CPA



Rap Commissioners <rap.commissioners@lacity.org>

Re: Request for Review – Park Fee Vesting Determination

1 message

Meghan Luera <meghan.luera@lacity.org>

Thu, Aug 14, 2025 at 8:52 AM

To: Rap Commissioners <rap.commissioners@lacity.org>

Cc: Darryl Ford <darryl.ford@lacity.org>, Cathie Santo Domingo <cathie.santodomingo@lacity.org>, RAP ParkFees <rap.parkfees@lacity.org>

Hi,

We have already advised the customer that the required Park Fee has been correctly assessed. There isn't anything else to add.

We did confirm the vesting date with LADBS in order to determine the applicability of LAMC 12.33.

Meghan Luera

Senior Management Analyst II

Department of Recreation and Parks

Planning, Maintenance and Construction

[221 North Figueroa St., Suite 400](#)[Los Angeles, CA 90012](#)

The 2025 LA Park Needs Assessment is an initiative of the City of Los Angeles Department of Recreation and Parks.

For more information and to sign up for project updates, visit our website at needs.parks.lacity.gov!

On Thu, Aug 14, 2025 at 7:43 AM Rap Commissioners <rap.commissioners@lacity.org> wrote:

Good Morning,

Please see the email below and advise.

Thank you

----- Forwarded message -----

From: **Six Points**

Date: Wed, Aug 13, 2025 at 10:39 PM

Subject: Request for Review – Park Fee Vesting Determination

To: <rap.commissioners@lacity.org>, <meghan.luera@lacity.org>

Dear Ms. Meghan Luera and Members of the Board of Commissioners,

My name is Gabriel, and I work with a family/partnership group of investors who own and developed two residential apartment projects in the City of Los Angeles. I am writing to bring to your attention a vesting and fee assessment issue that has impacted these projects and is placing a significant burden and risk on the families who own them.

This letter is intended to illustrate how a single, obscure detail in fine print can lead to a substantial and unanticipated problem that materially affects a project. I am seeking your support, guidance, and assistance in finding a resolution to this situation.

The projects are:

- — 15 units
- — 60 units

Issue

A Park and Recreation fee was assessed on both properties. The owners were not made aware of these fees until nearly the end of construction. The total amount is approaching \$500,000.

Background and Timeline

- In both projects, original permit applications and plan checks were initiated and substantially advanced before the July 17, 2017 effective date of the current Park Fee Ordinance.
- In both cases, extensions to the plan checks were requested by the project architect after July 17, 2017, without the knowledge or authorization of the owners. The project scopes did not change.
- Both projects were completed in 2023, but Certificates of Occupancy were withheld due to unpaid park fees.
- The extensions triggered a condition that resulted in the loss of vested rights under the prior ordinance.
- Building permits were issued and construction proceeded with no indication that additional park fees would be due. These fees were assessed only after construction was complete, at the time of applying for Certificates of Occupancy.

Key Issues

- **Vesting Status:** Based on the original plan check dates, both projects should have retained vested rights. Extensions did not involve new entitlements or substantive changes, were not initiated by the owners, and were done without the owners' knowledge or request.
- **Retroactive Application:** Fees were first raised at the Certificate of Occupancy stage, after substantial completion of the projects.
- **Lack of Owner Notification:** The extension condition did not explain the potential loss of vested rights or the resulting financial impact. A fee of this magnitude—nearly \$500,000 combined—should require owner consent and a detailed disclosure.
- **Procedural Imbalance:** Pulling an RTI permit for even a small project, such as an ADU, requires notarized letters of authorization and signed documents from the owner. In these cases, an architect was able to request an extension and sign a brief document without any owner involvement, resulting in severe financial consequences.
- **City-Related Delays:** Some extensions were necessitated by administrative delays outside of the owners' control, such as department backlog.
- **Financial Impact:** The fees represent a substantial, unplanned burden—especially in the current environment of rising interest rates, tighter budgets, a weakened rental market, and stricter property

Request

I respectfully request that the Board:

1. Recognize the vested rights of these projects based on the original plan check dates (2015 and 2016).
2. Waive or substantially reduce the park fees in light of the procedural faults and the lack of substantive project changes that would otherwise trigger the ordinance.

I am prepared to provide all supporting documentation, including plan check records, permit history, and correspondence, to assist in your review. LADBS has deferred to your office, indicating that clearance from RAP is required before Certificates of Occupancy can be issued.

Thank you for your understanding, time, and attention to this matter. I look forward to your guidance on next steps, alternative routers, and am available to meet in person or speak by phone to further discuss or present these details.

Regards,

Gabriel

--

City of Los Angeles
Office of the Board of Recreation and Park Commissioners
Figueroa Plaza
[221 North Figueroa Street, Suite 300](#)
[Los Angeles, CA 90012](#)

Telephone: (213) 202-2640
Fax: (213) 202-2610
Mail Stop: 625/15
Website: www.laparks.org



Rap Commissioners <rap.commissioners@lacity.org>

Re: Presentation of Data in Annual City Park Fee Reports

1 message

Rap Commissioners <rap.commissioners@lacity.org>

Fri, Aug 15, 2025 at 8:43 AM

To: Ron Bitzer

Good morning,

Thank you for contacting the Board of Recreation and Park Commissioners Office, your email will be forwarded to the Commissioners

On Thu, Aug 14, 2025 at 3:48 PM Ron Bitzer

wrote:

Dear Sir or Madam, Please review my suggestion about Park Fees disclosed by Council District ---- currently not the case. Ron Bitzer

--

City of Los Angeles
Office of the Board of Recreation and Park Commissioners
Figueroa Plaza
221 North Figueroa Street, Suite 300
Los Angeles, CA 90012

Telephone: (213) 202-2640
Fax: (213) 202-2610
Mail Stop: 625/15
Website: www.laparks.org

Statement of Ron Bitzer
North Hollywood, CA 91606
August 2025

To: Recreation and Parks Commissioners
Park Needs Assessment Consultant
Councilmembers Nazarian & Hutt (CD 2 & 10)

RE: A Suggestion for Reporting Quimby Park Fee Revenue

The Fiscal Year 2024 “Annual Report on Park Fees” stated that more than \$100 million in “Uncommitted Funds” existed at the end of June 2024. These are temporarily restricted funds ---- usually in cash ---- to satisfy the capital and park acquisition needs of the City’s parks and recreation centers rather than day-to-day operating needs. Elected officials at City Council act directly with City Council or the Department of Recreation and Parks in advocating for partial or full funding for projects from this temporarily-restricted fund. A Councilmember staffer has been quoted:

If (a decision) goes to the (Rec and Parks) commission, we (council office), have significant influence. We could call in there, and if we wanted it to go to a certain project, it would (City Council staffer), “Development Fees and Park Equity in Los Angeles,” Rigolon, Giamarino & Christensen, Journal of the American Planning Association, p. 14

NOTE: Recreation and Parks senior managers have explained to Commissioners how Park Fees originating in a Council District stay in that District “operationally” and do not comply with the Municipal Code “fee expenditure radius” operational provisions.

The pending Park Needs Assessment for the City refers to “existing funding gaps” for the Department of Recreation and Parks. A draft of this report --- due before the end of 2025 --- assigns no role to Park Fees either City-wide or by Council District. This is a major oversight since Park Fees as reported annually by Recreation and Parks accrue in a \$100+ million fund and are often committed without transparency for stakeholders and residents.



Seventy (70) Percent of FY24 cash Park Fees totalling \$35+million were paid in just *five* Council Districts (CDs 2,4,5,10, & 13) and eight percent of cash fees were paid in *four* other council districts.

Any self-help determination of disparities in collection of Park Fees by *Council District* .. requires sorting the “Fees Collected” data by column three in Attachment A or (Council District--- see below). Here is a screen shot from the FY 2024 Park Fee Report:

Fees Collected (Exhibit A)
Department of Recreation and Parks
Annual Report on Park Fees
for FY 23-24: July 1, 2023 to June 30, 2024

Case Number	Collection Address	Council District	Subdivisions	Fees	Admin
2014-2177	14101-14103 West Terra Bella Street	6			
2015-3153	1119-1121 North Sanborn Avenue	13		\$47,760.30	
2016-1290	2941 North Hutton Drive	5		\$15,920.10	
2018-1653	1311-1311 1/2 North Waterloo Street	13		\$15,920.10	
2018-1739	18424-18425 West Sunburst Street, 9000 North Canby Avenue	12	Subdivisions	\$31,840.20	
2019-1296	4805 North Matilija Avenue	4	Subdivisions	\$33,516.00	
2019-0143	1501 South Fairfax Avenue	10	Subdivisions	\$49,674.00	\$47,190.30
2020-6052	736-740 North Mallman Avenue	13	Subdivisions	\$16,558.00	\$15,730.10
2020-6489	2034 South Curson Avenue	10	Subdivisions	\$33,116.00	\$31,460.20
2021-2032	1120-1122 North Coronado Street	13	Subdivisions	\$16,558.00	\$15,730.10
2021-3248	15311 West Bledsoe Street	7	Subdivisions	\$33,116.00	\$31,460.20
2021-3921	8135 North Graystone Street	7	Subdivisions	\$33,516.00	\$31,840.20
2021-8617	2555 West Ivan Hill Terrace	4	Subdivisions	\$16,758.00	\$15,920.10
2021-9576	1920, 1924 South Barry Avenue	11	Subdivisions	\$50,274.00	\$47,760.30
2022-8478	7669 North Bellaire Avenue	2	Subdivisions	\$16,758.00	\$15,920.10
2023-4420	21340 North Chase Street	3	Subdivisions	\$16,758.00	\$15,920.10
71061	7901, 7909 West Beverly Boulevard	5	Subdivisions	\$16,558.00	\$15,730.10
74077	1051-1057 1/2 South Corning Street 1-19	6	Subdivisions	\$631,190.00	\$599,630.50
74289	6057 North Tujunga Avenue	2	Subdivisions	\$198,696.00	\$188,761.20
74726	5623-5637 North Elmer Avenue, 11300-11301 West Martha Street	2	Subdivisions	\$37,920.00	\$36,024.00
74774	501 South Barrington Avenue	11	Subdivisions	\$33,516.00	\$0.00
76042	3208-3214 North Verdugo Road	1	Subdivisions	\$231,812.00	\$220,221.40
77134	6845, 6849, 6855 North Figueroa Street	14	Subdivisions	\$99,348.00	\$94,380.60
82057	1503 West 207th Street 1-9	15	Subdivisions	\$82,790.00	\$78,650.50
82080	321 South Oxford Avenue 1-38	10	Subdivisions	\$115,906.00	\$110,110.70
82264	1973-1975 South Preuss Road	10	Subdivisions	\$529,856.00	\$503,363.20
82646	20024 West Chase Street	3	Subdivisions	\$66,232.00	\$62,920.40
82658	2820-2820 1/2, 2822-2822 1/2 North Avenel Street	4	Subdivisions	\$132,464.00	\$125,840.80
82683	1951-1953 South Preuss Road	10	Subdivisions	\$49,674.00	\$47,190.30
82829	1631-1641 North Wilcox Avenue, 1630-1638 North Schrader Boulevard	13	Subdivisions	\$66,232.00	\$62,920.40
82888	412-426 Croker Street, 411-425 Towne Avenue	14	Subdivisions	\$49,674.00	\$47,190.30
83014	12444 West Chandler Boulevard	2	Subdivisions	\$33,116.00	\$31,460.20
83061	13906 West Oxnard Street	2	Subdivisions	\$524,640.00	\$498,408.00
83276	3651 North Regal Place 1-2	4	Subdivisions	\$100,548.00	\$95,520.60
83390	955 North Everett Street	1	Subdivisions	\$314,602.00	\$298,871.90
83441	120-230 North Judge John Aiso Street, 200 North Central Ave	14	Subdivisions	\$62,790.00	\$78,650.50
83547	20327, 20329 West Staggy Street	3	Subdivisions	\$50,274.00	\$47,760.30
83753	2772-2776 West Rowena Avenue	4	Subdivisions	\$100,548.00	\$95,520.60
				\$82,790.00	\$78,650.50

Council Districts reported randomly

SUGGESTION: I have revised Excel Files to group Park Fees (cash) by Council District and I request this service for the FY 2025 report currently in progress. Lack of any semblance of equity in distribution of Park Fees among 15 City Council Districts is a policy issue not discussed here.