

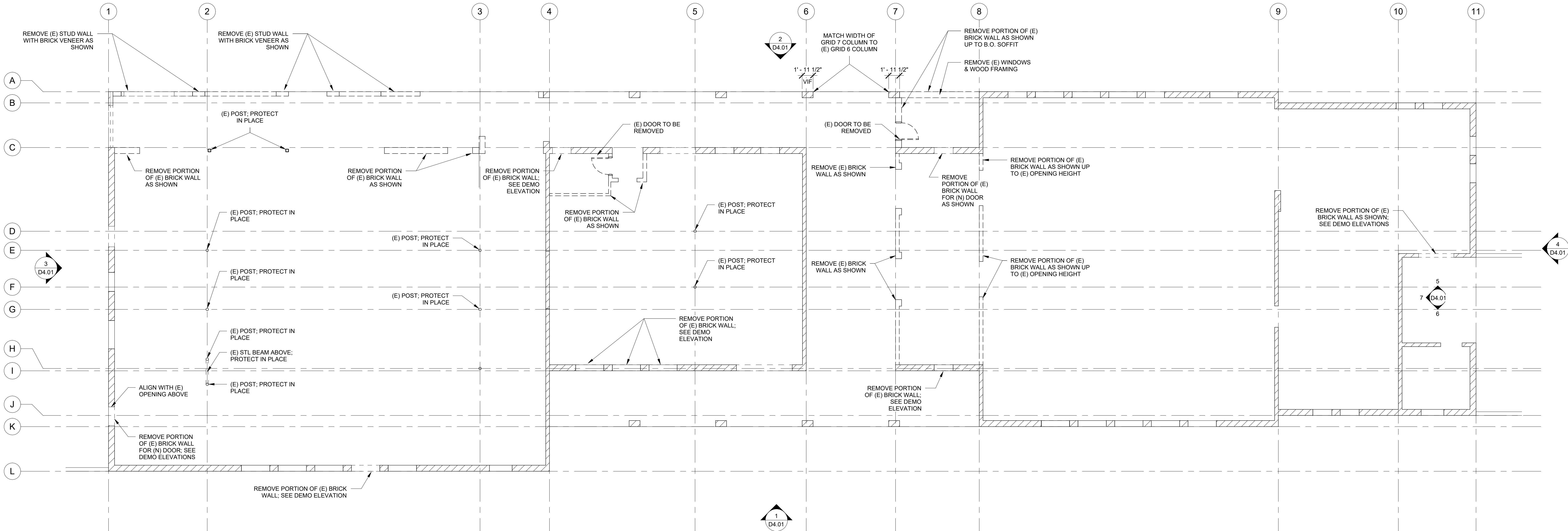
THE CITY OF LOS ANGELES OR ITS OFFICERS OR AGENTS SHALL NOT BE RESPONSIBLE FOR THE ACCURACY OR COMPLETENESS OF ELECTRONIC COPIES OF THIS PLAN SHEET.

GENERAL NOTES

1. ALL (E) METAL FRAMING TO BE REMOVED.
2. ALL (E) DOORS TO BE REMOVED

LEGEND

- /// (E) MASONRY WALL TO REMAIN
- (E) WALL TO BE REMOVED



1 DEMO FIRST FLOOR PLAN
D2.01 SCALE: 1/8" = 1'-0"

THE CITY OF LOS ANGELES
DEPARTMENT OF RECREATION AND PARKS

GENERAL MANAGER: JIMMY KM

PROJECT DESIGNER:
PROJECT ENGINEER:
AS-BUILT BY:

SUPERINTENDENT: DARRYL FORD

LC NO.
LC NO.
DATE

PROJECT NAME:
RANCHO PARK GOLF CLUBHOUSE RENOVATION

ADDRESS:
10460 W PICO BLVD, LOS ANGELES, CA 90064

REVISIONS:	DATE:
Δ	
Δ	
Δ	
Δ	
Δ	

PLAN NAME:
DEMO FLOOR PLANS

DRAWN BY: Author	APPROVED BY: Approver
SCALE:	ISSUE DATE:
W.O. NO. RJA	FILE NO. --
DRAWING NO. D2.01	
SHEET	OF SHEETS