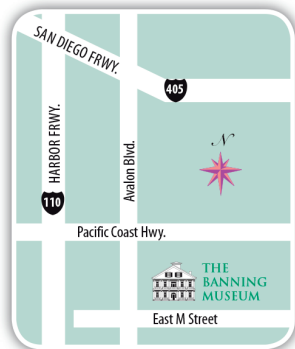




401 East M Street, Wilmington, CA 90744
 (310) 548-7777
info@thebanningmuseum.org
 @thebanningmuseum

Hours of Operation:
Guided tours of the Museum are available –
 Tuesday - Thursday:
 12:30 p.m., 1:30 p.m. and 2:30 p.m.
 Saturday and Sunday:
 12:30 p.m., 1:30 p.m., 2:30 p.m. and 3:30 p.m.
 Group tours may also be scheduled with
 advance reservation.

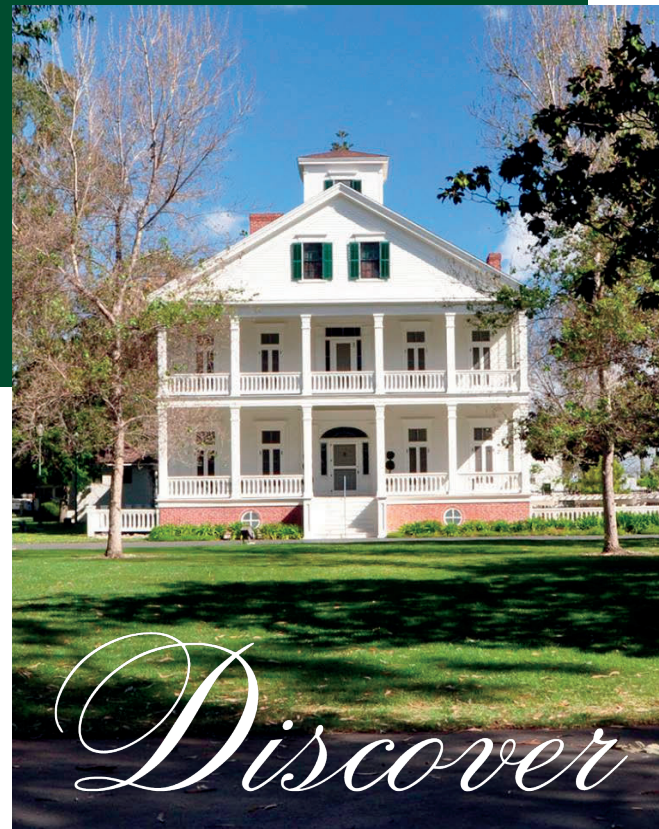
Admission:
 Guided Museum Tours:
 Suggested donation of \$5 for adults and
 \$1 for children 12 and under



THE BANNING MUSEUM is a facility of the City of Los Angeles, Department of Recreation and Parks and is operated in cooperation with Friends of Banning Museum. The Banning Museum is a City, State and National Historic Landmark. Friends of Banning Museum is a non-profit organization. Tax ID #23-7401609

As a covered entity under Title II of the Americans with Disabilities Act, the City of Los Angeles does not discriminate on the basis of disability and, upon request, will provide reasonable accommodation to ensure equal access to its programs, services and activities.

© Copyright 2023 Friends of Banning Museum. All rights reserved.



Discover

THE BANNING MUSEUM



Where the Past Inspires the Future

Nestled near the Banning/Wrigley Historic Preservation Overlay Zone in Wilmington, CA, just a few miles away from the Port of Los Angeles, the beautiful Banning Museum is truly one of California's historic gems. The gracious, stately Victorian residence and surrounding grounds beckon visitors to experience life as it was in mid- to late-nineteenth-century Los Angeles and meet one of the area's most influential and visionary residents of the time, General Phineas Banning.



Phineas Banning arrived in San Pedro from the east coast in 1851. Although he brought little money with him, he was rich in drive, determination and ambition, and possessed a vibrant entrepreneurial spirit — all of which propelled him to great achievements that set the course for Los Angeles to become a center of commerce and influence.

Banning built his home thirteen years after his arrival in California. The beautiful Banning Residence has been lovingly maintained and restored and is today considered the finest existing example of residential Greek Revival architecture in Southern California.



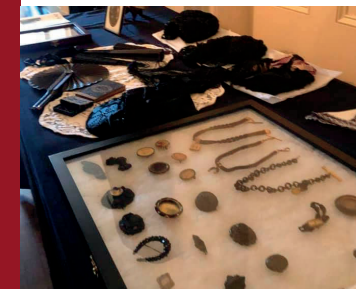
So much to learn...

If its walls could talk, The Banning Museum would reminisce about galas, hearty celebrations and warm family gatherings, business meetings of monumental proportion, prominent guests, and a man of vision and determination who changed the future of Los Angeles. The Banning Museum campus encourages visitors to shrug off the present and, just for a moment, step back in time.



...and so much to see!

Visitors to this important City, State and National Historic Landmark will enjoy touring the Banning Residence, which features period apparel, furnishings, artifacts and interpretive life, leisure and business scenarios.



Friends of Banning Museum



MISSION STATEMENT:

*Preserve History, Promote Education,
and Inspire
Entrepreneurial Spirit*

FOUNDED IN 1974, Friends of Banning Museum works in cooperation with the City of Los Angeles Department of Recreation and Parks to support the Museum’s ongoing restoration and educational programs. For nearly 50 years, the Friends have worked to ensure that the remarkable story of Phineas Banning and the immense impact he had on the development of Southern California is not lost to history.

Membership provides for critical museum conservation, docent-led tours, free field trips for thousands of local schoolchildren, acquisition of period artifacts and antiques, enriching lectures and special events for the community and so much more.

If you want to become a part of the Friends Community of Supporters without being a member, please support us and consider donating to Friends of Banning Museum today.

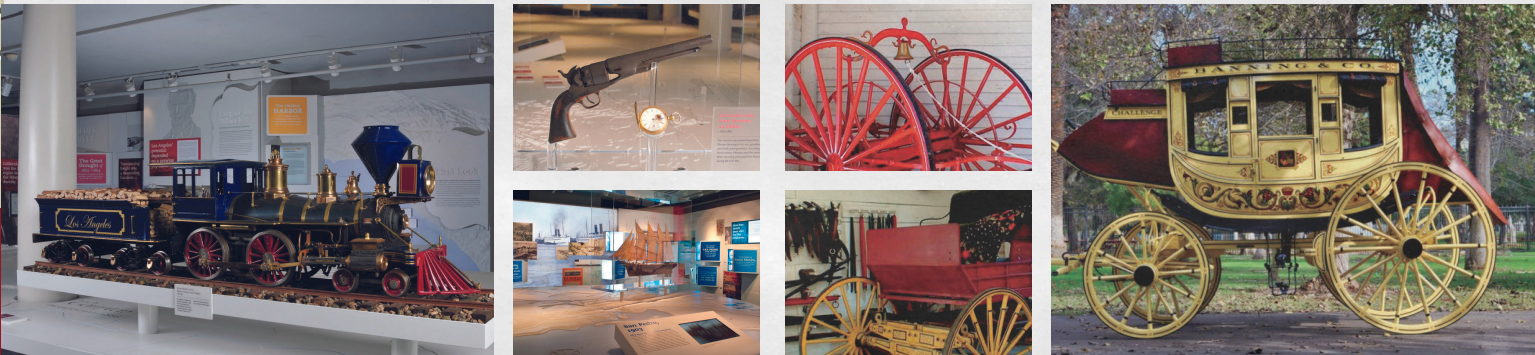
Join us today!

To learn more, scan QR code or visit:
www.thebanningmuseum.org



Improbable Gateway: The Los Angeles Transportation Legacy

The Banning Museum is proud to be home to an exciting permanent exhibition that tells the story of the growth of transportation systems in Southern California, and how the transformation that took place in such a short time changed the face and destiny of the area.



Stagecoach Barn

A trip to the Stagecoach Barn reveals several horse-drawn carriages originally used by the Banning family. The Banning Museum’s stagecoach (Challenge) shown here is a reproduction of a coach that was built in Wilmington in 1867 for Phineas Banning. Banning used stagecoaches like this one to transport passengers and mail between Wilmington and Los Angeles and other destinations around Southern California.

Volunteer Opportunities

The Banning Museum offers exciting volunteer opportunities for those interested in giving their time and becoming involved with something interesting and important. After a fascinating training program, Volunteers can serve as period-costumed docents leading tours, become members of various curatorial committees, and are vital participants in the Museum’s educational programs. Special excursions, activities and programs tailored just for the Volunteers add another dimension to this worthwhile activity.

For information on becoming a volunteer, and to find out the dates of the next training program, call (310) 548-7777.



Educational Programs

The Banning Museum is very proud of its educational programs: **Living History School Program and Banning Heritage Week for fourth graders** and **Evolution of a Town for third graders**. Each year, thousands of schoolchildren attend these programs, which are designed to enrich the learning experience and instill in the young participants a love of history and an appreciation of what individuals can accomplish with ambition, confidence and a sense of personal direction.



In addition to the Banning residence, the Museum campus is made of many fascinating areas to experience including the historic Stagecoach Barn, the *Improbable Gateway* — our state of the art permanent exhibition, the Norris Visitor Center and the beautiful Howard Rose Garden.

The Howard Rose Garden Blending the beauty of new and old

The Howard Rose Garden at The Banning Museum is one of the loveliest spots on the Museum campus. Located near the Stagecoach Barn, the Howard Rose Garden displays a variety of roses sure to delight anyone who is captivated by the charm, grace and sheer beauty of this beloved flower. The garden is framed by a historic Wisteria vine, which during blooming season is awash in color from the vine’s characteristic vibrant purple blossoms. Brick walkways highlight the design of the garden, and latticework screens it from the distractions of nearby modern highway traffic, making this space one of calm and tranquility.

The Howard Rose Garden was named in honor of Paul J. Howard (1882 to 1966), a celebrated Los Angeles horticulturist and prominent, respected landscape designer whose parents came to Los Angeles in the mid-1800s. After his death, his daughters Carol Howard Richards and Allaseba Howard Gorham generously funded the development of the rose garden, which has long been a popular stop for visitors to the Museum.

