

CITY OF LOS ANGELES DEPARTMENT OF RECREATION AND PARKS



PARK PROUD LA

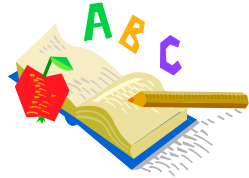
METRO REGION-NORTH DISTRICT

CARLIN G. SMITH RECREATION CENTER

511 W. Ave 46
Los Angeles, CA 90065
(323) 225-4960



Carlin G. Smith RC After-School Club
2019-2020



IMPORTANT INFORMATION

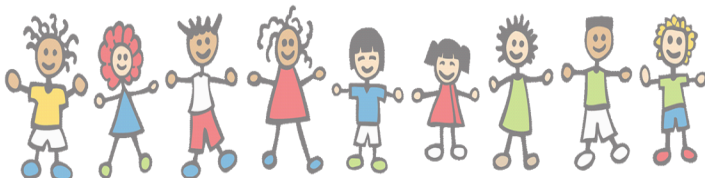
Carlin G. Smith Recreation Center is closed on city holidays. Please note that some city holidays may not be observed by LAUSD. Please look at the holiday schedule below to determine if alternate childcare is needed.

Table with 2 columns: Holiday Name and Date. Includes Labor Day, Indigenous Day, Veteran's Day, Thanksgiving, Christmas Day, New Year's Day, Martin Luther King, Presidents Day, Cesar Chavez Day, Memorial Day.

Important: There will be no After-school club on unassigned days from LAUSD

CALLING OUT SICK or NO PICK UP

If your child will be absent on his/her scheduled pick up day, please notify staff no later than 1pm by calling (323)225-4960.



After-School Hours:
2:30pm to 5:30pm

Please provide the following items:
1 box of tissue
1 Lysol or Clorox wipes
Thank you

MONTHLY PAYMENT
Payment must be done according to the due dates in the parent manual
Monthly Cost:
Full week \$130
2-3 days a week \$90
1 day a week \$50
Cash (exact change), Visa/Mastercard and Checks are accepted
Make checks payable to: City of Los Angeles
A collection fee will be charged for each returned check
CASH PAYMENT MUST BE EXACT AMOUNT
Online payment is also available
reg.laparks.org

The classes and programs in this brochure may be subject to cancellation.

CITY OF LOS ANGELES DEPARTMENT OF RECREATION AND PARKS

**CARLIN G. SMITH RECREATION CENTER
ASC**

2017-2018

MONTHLY PAYMENT

Parents please specify the exact days of pick ups



MONTHLY FEE: Will be as follows by month:

	Full week	2-3 Days	1 Day	Due by
August (Aug 20– Aug 30)	\$ 75	\$ 50	\$30	August 09
September (Sept 3– Sept 27)	\$130	\$ 90	\$50	August 30
October (Sept 30-Oct 25)	\$130	\$ 90	\$50	September 27
November (Oct 28-Nov 22)	\$130	\$ 90	\$50	October 25
December (Dec 2-Dec 20)	\$100	\$ 70	\$40	November 22
January (Jan 13-Jan 31)	\$100	\$ 70	\$40	December 31
February (Feb 3– Feb 28)	\$130	\$ 90	\$50	January 31
March (Mar 2-Mar 31)	\$130	\$ 90	\$50	February 28
April (April 1– May 1)	\$130	\$ 90	\$50	March 31
May (May 4- May 29)	\$130	\$ 90	\$50	April 30
June (June 1-June 12)	\$ 75	\$ 50	\$30	May 29

Persons with disabilities are encouraged to participate in our classes and programs.

Reasonable accommodations will be made with prior arrangements.

Community: Through People, Parks and Programs

RAISE THE BAR

Achieving gender equity through a continuous commitment to girls and women in sports

"The classes and programs in this brochure may be subject to cancellation."