



# TRACK & FIELD



Registration Starts  
3/03/25

AGES 8-15  
**\$10**  
PER CHILD

Every Thursday  
4:00pm - 5:00pm

**8 WEEK SESSION**

CLASSES BEGIN APR 10TH, 2025

CLASSES ENDS MAY 24, 2025

**DENKER REC CENTER**

1550 W. 35TH PL

LOS ANGELES. CA 90018

(323) 733-8367



SCAN QR  
CODE OR  
VISIT

[laparks.org/reccenter/denker](http://laparks.org/reccenter/denker)

Persons with disabilities are encouraged to participate in our classes and programs. Reasonable accommodations may be made with prior arrangement. "Achieving Gender Equity through a continuous commitment to Girls and Women in Sports" This program is subject to cancellation. "PlayLA Youth and Adaptive Sports Program is made possible by the LA28 Olympic and Paralympic Games, allowing youth to participate for \$10. Waivers are available, ask for details.



# PISTA & CAMPO



Comienza el registro

3/03/25

Edades 8-15

**\$10**

POR NIÑO

Todos los jueves

4:00pm - 5:00pm

**SESIÓN DE 8 SEMANAS**

LAS CLASES COMIENZAN EL 10 DE ABRIL DE 2025

LA CLASE TERMINA EL 24 DE MAYO DE 2025

**DENKER REC CENTER**

1550 W. 35TH PL.

LOS ANGELES. CA 90018

(323) 733-8367

SCAN QR  
CODE OR  
VISIT

[laparks.org/reccenter/denker](http://laparks.org/reccenter/denker)



Persons with disabilities are encouraged to participate in our classes and programs. Reasonable accommodations may be made with prior arrangement. "Achieving Gender Equity through a continuous commitment to Girls and Women in Sports" This program is subject to cancellation. "PlayLA Youth and Adaptive Sports Program is made possible by the LA28 Olympic and Paralympic Games, allowing youth to participate for \$10. Waivers are available, ask for details.



# JUDO

## 8 WEEK SESSION

### DENKER REC. CENTER

1550 W. 35TH PL. LA, CA 90018  
OFFICE: (323)733-8367



**REGISTRATION:**  
**3/03/25**

TUESDAY - 6:30PM-8:30PM

THURSDAY - 6:30P-8:30PM

**\$10** EACH  
SESSION



**CLASSES BEGIN  
APR 8TH, 2025**

**AGES 5-17**

**AGES VARY BY SITE**

Persons with disabilities are encouraged to participate in our classes and programs. Reasonable accommodations may be made with prior arrangement. "Achieving Gender Equity through a continuous commitment to Girls and Women in Sports" This program is subject to cancellation. "PlayLA Youth and Adaptive Sports Program is made possible by the LA28 Olympic and Paralympic Games, allowing youth to participate for \$10. Waivers are available, ask for details.



VISIT US AT: [LAPARKS.ORG](http://LAPARKS.ORG)



# JUDO

## SESIÓN DE 10 SEMANAS

### DENKER REC. CENTER

1550 W. 35TH PL. LA, CA 90018  
OFFICE: (323)733-8367



MARTES - 6:30PM-8:30PM

JUEVES - 6:30PM-8:30PM

### 3 DE MARZO DE 2025

**\$10** CADA SESIÓN



**LAS CLASES COMIENZAN  
5 DE ABRIL DE 2025  
EDADES 5-17  
LAS EDADES VARÍAN  
SEGÚN EL SITIO**

Persons with disabilities are encouraged to participate in our classes and programs. Reasonable accommodations may be made with prior arrangement. "Achieving Gender Equity through a continuous commitment to Girls and Women in Sports" This program is subject to cancellation. "PlayLA Youth and Adaptive Sports Program is made possible by the LA28 Olympic and Paralympic Games, allowing youth to participate for \$10. Waivers are available, ask for details.



VISIT US AT: [LAPARKS.ORG](http://LAPARKS.ORG)



# JUDO

## 8 WEEK SESSION

<b>\$10</b> PER PERSON	YOUTH AGE <b>5-17</b>	<b>APR 5TH - MAY 24</b> <b>2025</b>
---------------------------	--------------------------	--

@DENKERRECREATIONCENTER

### SATURDAYS

### AGE 5-17: 10AM - 12PM

### DENKER RECREATION

1550 W. 35TH PL.  
LOS ANGELES, CA 90018  
(323) 733-8367



SCAN QR  
CODE OR  
VISIT

[laparks.org/reccenter/denker](http://laparks.org/reccenter/denker)



Persons with disabilities are encouraged to participate in our classes and programs. Reasonable accommodations may be made with prior arrangement. "Achieving Gender Equity through a continuous commitment to Girls and Women in Sports" This program is subject to cancellation. "PlayLA Youth and Adaptive Sports Program is made possible by the LA28 Olympic and Paralympic Games, allowing youth to participate for \$10. Waivers are available, ask for details.



# DENKER REC. CENTER



# Boxing



## Youth Co-Ed

**Registration Starts**

**3/03/25**



**AGES 7-15**

**\$10**

**PER CHILD**

**8 WEEK SESSION**

**CLASSES BEGIN APR 7TH, 2025**

**CLASSES ENDS MAY 19TH, 2025**

**MONDAYS**

**4PM-5PM**

**5PM-6PM**

**DENKER REC CENTER**

**1550 W. 35TH PL.**

**LOS ANGELES. CA 90018**

SCAN QR  
CODE OR  
VISIT

[laparks.org/reccenter/denker](http://laparks.org/reccenter/denker) **(323) 733-8367**



Persons with disabilities are encouraged to participate in our classes and programs. Reasonable accommodations may be made with prior arrangement. "Achieving Gender Equity through a continuous commitment to Girls and Women in Sports" This program is subject to cancellation. "PlayLA Youth and Adaptive Sports Program is made possible by the LA28 Olympic and Paralympic Games, allowing youth to participate for \$10. Waivers are available, ask for details.



# DENKER REC. CENTER

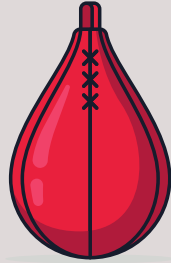
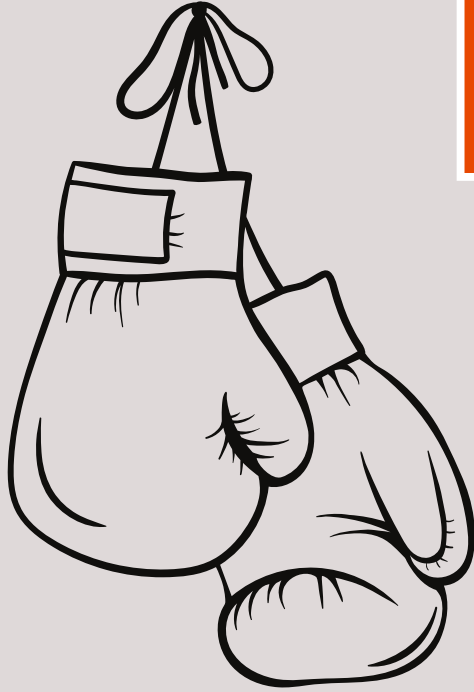


# GPLA

Girls Play Los Angeles

**Registration Starts**  
**3/03/25**

# Boxing



**AGES 7-15**  
**\$10**  
**PER CHILD**

**8 WEEK SESSION**

**CLASSES BEGIN APR 7TH, 2025**

**CLASSES ENDS MAY 19TH, 2025**

**MONDAYS**

**6PM-7PM**

**DENKER REC CENTER**

**1550 W. 35TH PL.**

**LOS ANGELES. CA 90018**

**(323) 733-8367**



SCAN QR  
CODE OR  
VISIT

[laparks.org/reccenter/denker](http://laparks.org/reccenter/denker)

Persons with disabilities are encouraged to participate in our classes and programs. Reasonable accommodations may be made with prior arrangement. "Achieving Gender Equity through a continuous commitment to Girls and Women in Sports" This program is subject to cancellation. "PlayLA Youth and Adaptive Sports Program is made possible by the LA28 Olympic and Paralympic Games, allowing youth to participate for \$10. Waivers are available, ask for details.



# DENKER REC. CENTER

# CROCHET



**YOUTH CO-ED**

**Registration Starts**  
**3/03/25**



**AGES 6-14**

**\$10**

**PER CHILD**

**8 WEEK SESSION**

**CLASSES BEGIN APR 9TH, 2025**

**CLASSES ENDS MAY 28, 2025**

**WEDNESDAYS**

**4:30PM-5:30PM**

**DENKER REC CENTER**

**1550 W. 35TH PL.**

**LOS ANGELES. CA 90018**

**(323) 733-8367**



SCAN QR  
CODE OR  
VISIT

[laparks.org/reccenter/denker](https://laparks.org/reccenter/denker)





# BALLET

## 8 WEEK SESSION

### DENKER REC. CENTER

1550 W. 35TH PL. LA, CA 90018  
OFFICE: (323)733-8367



### TUESDAYS

TINY BALLET 5:00PM-5:30PM

BALLET 5:30PM-6:30PM

**REGISTRATION:**  
**3/03/25**

**\$10** PER CHILD



**CLASSES BEGIN  
APRIL 8TH, 2025**

**CLASSES END  
MAY 27TH, 2025**

**AGES 4-6 "TINY BALLET"**  
**AGES 7-12 "BALLET"**

## YOUTH CO-ED



Persons with disabilities are encouraged to participate in our classes and programs. Reasonable accommodations may be made with prior arrangement. "Achieving Gender Equity through a continuous commitment to Girls and Women in Sports" This program is subject to cancellation. "PlayLA Youth and Adaptive Sports Program is made possible by the LA28 Olympic and Paralympic Games, allowing youth to participate for \$10. Waivers are available, ask for details.



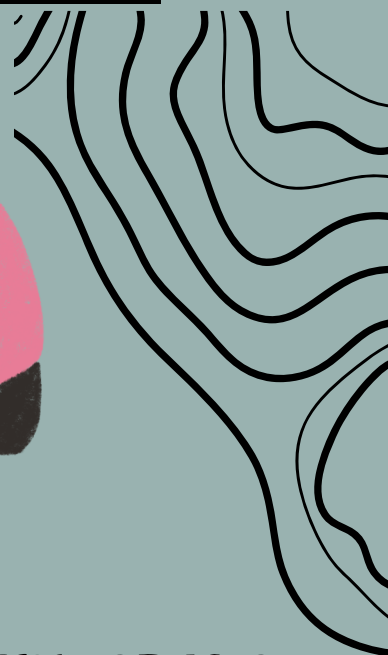
# DENKER REC. CENTER



# ARTFUL EXPRESSIONS



**Registration Starts**  
**3/03/25**



## 8 WEEK SESSION

**AGES 5-17**

# \$10

**PER CHILD**

**CLASSES BEGIN APR 10TH, 2025**

**CLASSES ENDS MAY 29TH, 2025**

**THURSDAYS**

**5:00PM-6:00PM**

## DENKER REC CENTER

**1550 W. 35TH PL.**

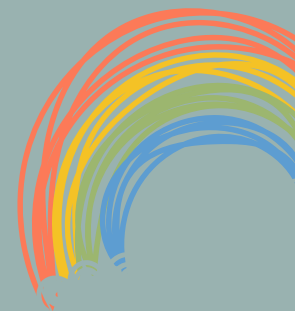
**LOS ANGELES. CA 90018**

**(323) 733-8367**



SCAN QR  
CODE OR  
VISIT

[laparks.org/recenter/denker](https://laparks.org/recenter/denker)



# DENKER REC. CENTER

# DANCE



**REGISTRATION STARTS**  
**3/03/2025**



@DENKERRECREATIONCENTER

**AGES 9-17**

**\$10**  
**PER CHILD**

**8 WEEK SESSION**

**FRIDAYS**  
**6PM-7PM**

**CLASSES BEGIN APRIL 11TH, 2025**

**CLASSES ENDS MAY 30TH, 2025**

**DENKER REC CENTER**

**1550 W. 35TH PL.**

**LOS ANGELES. CA 90018**

**(323) 733-8367**



SCAN QR  
CODE OR  
VISIT

[laparks.org/reccenter/denker](http://laparks.org/reccenter/denker)



Persons with disabilities are encouraged to participate in our classes and programs. Reasonable accommodations may be made with prior arrangement. "Achieving Gender Equity through a continuous commitment to Girls and Women in Sports" This program is subject to cancellation. "PlayLA Youth and Adaptive Sports Program is made possible by the LA28 Olympic and Paralympic Games, allowing youth to participate for \$10. Waivers are available, ask for details.