

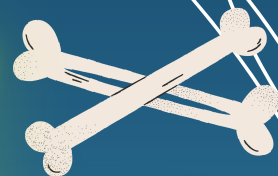
CITY OF LOS ANGELES DEPARTMENT OF RECREATION & PARKS METRO REGION EAST DISTRICT

## EVERGREEN RECREATION CENTER

2844 EAST 2<sup>ND</sup> ST., LOS ANGELES CA 90033

PH: (323)262-0397

@EVERGREEN.RC



# HALLOWEEN TRUNK OR TREAT

OCTOBER | 31 | FRIDAY

*Join us for a frightfully fun night full of tricks,  
treats, and terrifyingly good vibes!*

CARNIVAL GAMES,  
REFRESHMENTS,  
FACE PAINTING,  
ARTS & CRAFTS,  
AND SNACKS

5:00 pm- 9:00pm

### COSTUME CONTEST!

0-4 YRS OLD @ 6PM

5-8 YRS OLD 6:30PM

9-13 YRS OLD 7PM

14-18 YRS OLD 7:30PM



### Location:

2844 East 2<sup>nd</sup> st., Los  
Angeles CA 90033

**YSABEL JURADO**  
L.A. CITY COUNCIL MEMBER  
DISTRICT 14

IF YOU ARE A PERSON WITH A DISABILITY AND REQUIRE ACCOMMODATION TO PARTICIPATE IN A CITY OF LOS ANGELES DEPARTMENT OF RECREATION AND PARKS PROGRAM, SERVICE, OR ACTIVITY, REQUESTS MAY BE MADE BY CALLING THE FACILITY (323)262-0397, OR 711 FOR CA RELAY, TEN DAYS IN ADVANCE OF THE EVENT. WE WILL DO OUR BEST TO FULFILL REQUESTS WITH LESS THAN TEN BUSINESS DAYS' NOTICE.

IF A PARTICIPANT REQUIRES A ONE TO ONE AIDE, REQUESTS WILL BE FULFILLED WITHIN SEVEN BUSINESS DAYS OF RECEIVING REQUIRED PAPERWORK AND DOCUMENTATION NEEDED TO ISSUE A RIGHT OF ENTRY PERMIT TO THE AGENCY PROVIDING THE AIDE.