

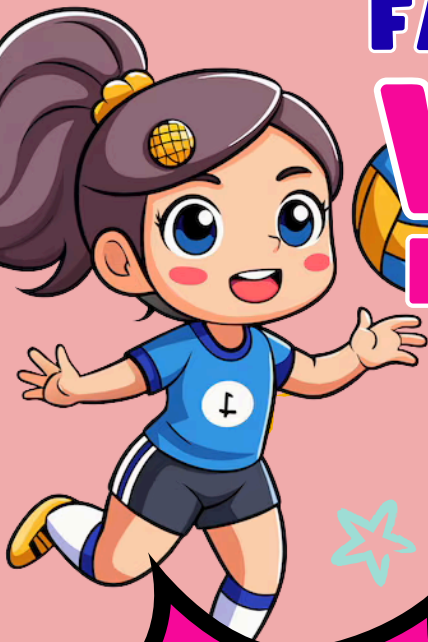


City of Los Angeles Department of Recreation & Parks



MASON  
RECREATION  
CENTER

10500 Mason Ave. Chatsworth, CA 91311



FALL 25'

# VOLLEYBALL

## INSTRUCTIONAL LEAGUE

# GIRLS MINIS

**Born in 2017-16**

Online registration starts:  
July. 30th 2025

FEE:

**\$140\***

**EVALUATIONS: 9/13 9AM**

\*Fee includes: Uniform, official Fees, and awards (photos not included). Waivers available for those who qualify, ask for details.



Scan the QR code or  
visit our website to  
register

[www.laparks.org/reccenter/mason](http://www.laparks.org/reccenter/mason)

(818) 998-6377

mason.recreationcenter@lacity.org

@masonrecreationcenter

- Games and Practices are on **SUNDAYS** starting in September
- Practice will be before their game
- Practice is 30 mins.
- Game after practice
- Two sets up to 15 points
- Total Time 1.5 hours
- 8 game season
- Awards (Awards will be donated after Winter 26')

**CARPOOL AND TEAM REQUEST ARE NOT GRANTED**

PlayLA Youth and Adaptive Youth Sports Program is made possible by the LA28 Olympic and Paralympic Games. All programs subject to change or cancellation. A 15% cancellation fee is assessed for all refunds. No refunds will be issued after teams have been made. PlayLA reduced payments will not be eligible for refunds. Persons with disabilities are welcome to participate in our programs. In some cases a person of assistance may be required. Reasonable accommodations will be made with prior arrangements. Achieving gender equity through a continuous commitment to girls and women in sports. Good sportsmanship is everyone's responsibility. IT STARTS WITH YOU!