

CITY OF LOS ANGELES DEPARTMENT OF RECREATION AND PARKS
NORTHRIDGE RECREATION CENTER
18300 LEMARSH STREET NORTHRIDGE CA 91326



WINTER

BROCHURE

2025-2026

SCAN HERE
TO REGISTER
NOW!!



Facility Information

HOURS OF OPERATION

MONDAY - FRIDAY 9:00AM - 9:00PM

SATURDAY 8:00AM - 4:00PM

SUNDAY CLOSED

2025 WINTER FACILITY CLOSURE DATES

WEDNESDAY, DECEMBER 25TH - CHRISTMAS DAY

WEDNESDAY, JANUARY 1ST- NEW YEARS DAY

MONDAY, JANUARY 20TH- MLK DAY

NORTHRIDGE RECREATION CENTER

MAIN OFFICE - LINE 1	(818) 349 - 7341
MAIN OFFICE - LINE 2	(818) 349 - 7342
CHILD CARE OFFICE	(818) 349 - 3544
NORTHRIDGE POOL OFFICE	(818) 709 - 7475

REFERENCE NUMBERS

CITY WIDE AQUATICS	(323) 906 - 7953
PARK FILM OFFICE	(323) 644 - 6220
OFFICE OF PUBLIC SAFETY	(213) 978 - 4670
PARK RANGERS	(323) 644 - 6661
MUNICIPAL SPORTS OFFICE	(818) 765 - 0284
CITY OF LA INFORMATION	3 - 1 - 1

VALLEY PARKS

BALBOA RC	(818) 756-9642
CANOGA PARK SCC	(818) 340-2633
CHATSWORTH RC	(818) 341-6595
ENCINO COMMUNITY CTR.	(818) 995-1690
GRANADA HILLS RC	(818) 363-3556
LANARK RC	(818) 883-1503
MASON RC	(818) 998-6377
RESEDA RC	(818) 881-3882
SHADOW RANCH RC	(818) 883-3637
TARZANA RC	(818) 343-5946
WILKINSON SCC	(818) 756-7741
WINNETKA RC	(818) 756-7876
WOODLAND HILLS RC	(818) 883-9370

Class Information

CLASSES BEGIN THE WEEK OF

Monday January 13th 2025

ON-LINE REGISTRATION

Monday December 2nd 2024

WALK-IN REGISTRATION

Monday, December 16th 2024

REGISTRATION LOCATION

RECREATION CENTER OFFICE
18300 LEMARSH ST.
NORTHRIDGE · CA 91324

"PERSONS WITH DISABILITIES ARE WELCOMED TO PARTICIPATE IN OUR CLASSES AND PROGRAMS. REASONABLE ACCOMMODATIONS WILL BE MADE WITH PRIOR ARRANGEMENTS. PLEASE BE AWARE THAT SOME ACCOMMODATIONS MAY TAKE 30 DAYS OR LONGER. PLEASE SUBMIT YOUR REQUEST FOR AN ACCOMMODATION AS SOON AS POSSIBLE."

IMPORTANT INFORMATION:

- NORTHRIDGE RECREATION CENTER ADMINISTRATION RESERVES THE RIGHT TO CANCEL OR COMBINE ANY CLASSES DUE TO LOW ENROLLMENT.
- ALL CLASSES AND PROGRAMS IN THIS BROCHURE MAY BE SUBJECT TO CHANGE OR CANCELLATION.
- ALL CLASSES ARE ON A FIRST COME FIRST SERVED BASIS.
- PARTICIPANTS MUST HAVE REACHED THE MINIMUM AGE FOR CLASSES BY THE FIRST DAY.
- CLASSES WILL NOT BE IN SESSION ON HOLIDAYS OBSERVED BY THE CITY OF LOS ANGELES.
- ANY CLASS THAT IS CANCELLED BY NORTHRIDGE RECREATION CENTER STAFF WILL BE MADE UP AT THE END OF THE SESSION. CLASS WILL NOT BE MADE UP IF THE STUDENT IS ABSENT, INCLUDING ILLNESSES.

PAYMENT PROCESS

FULL PAYMENT FOR ALL CLASSES IS DUE AT THE TIME OF REGISTRATION.

METHODS OF PAYMENT ACCEPTED: CHECKS AND CREDIT CARDS
PLEASE MAKE ALL CHECKS PAYABLE TO:
CITY OF LOS ANGELES

A COLLECTION FEE WILL BE CHARGED FOR EACH CHECK RETURNED BY BANK.

WE ACCEPT



REFUND POLICY

FULL REFUNDS ARE ONLY ISSUED WHEN THE RECREATION CENTER CANCELS THE ACTIVITY. A 15% CANCELLATION FEE PER PARTICIPANT IS ASSESSED FOR ALL REFUNDS. CHANGES OR TRANSFERS PER CLASS, SPORTS LEAGUE OR DAY CAMP REGISTRATION MAY BE ASSESSED ADDITIONAL FEES. AFTER THE FIRST DAY OF A SESSION, THE RECREATION CENTER ISSUES A PARTIAL REFUND TO PATRONS WITHDRAWING FROM THE ACTIVITY.

TAX ID #: 95-6000-735



WINTER 2025 CLASSES

REGISTRATION OPEN: DECEMBER 2ND, 2024

CLASSES START THE WEEK OF JANUARY 13TH- 8 WEEK SESSIONS

DAYS	CLASS NAME	AGE	TIME	LOCATION	FEE
MONDAYS	ADULT LINE DANCING	ADULT	10:00AM-12:00PM	GYM	\$10/ MONTH
	TAEKWONDO	5-12 YRS	5:00PM-6:30PM	DEVONSHIRE HOUSE	\$50/ 8 WEEKS
TUESDAYS	TAI CHI	ADULT	8:45AM-9:45AM	OUTSIDE/GYM	\$110/ 12 WEEKS
	KIDS TENNIS-BEGINNING	7-10 YRS	4:00PM-5:00PM	TENNIS COURTS	\$100/ 8 WEEKS
	KIDS TENNIS-INTERMEDIATE	11-15 YRS	5:00PM-6:00PM	TENNIS COURTS	\$100/ 8 WEEKS
	KIDS TENNIS-ADVANCED	12 & UP	6:00PM-7:00PM	TENNIS COURTS	\$100/ 8 WEEKS
	PIANO & GUITAR LESSONS	7- ADULT	3:30PM-6:30PM (30 MINS EACH CLASS)	MUTLI ROOM	\$150 / 8 WEEKS (1 ON 1 WITH INSTRUCTOR)
WEDNESDAYS	KIDS TENNIS-BEGINNING	7-10 YRS	5:00PM-6:00PM	TENNIS COURTS	\$100/ 8 WEEKS
	KIDS TENNIS-INTERMEDIATE	11-15 YRS	6:00PM-7:00PM	TENNIS COURTS	\$100/ 8 WEEKS
	KIDS TENNIS-GPLA	9-15 YRS	4:00PM-5:00PM	TENNIS COURTS	\$10/ 8 WEEKS
	KARATE	5-12 YRS	5:00PM-6:00PM	DEVONSHIRE HOUSE	\$100 / 8 WEEKS
	KARATE	5-17 YRS	6:00PM-7:00PM	DEVONSHIRE HOUSE	\$100 / 8 WEEKS
THURSDAYS	TAI CHI	ADULT	8:30AM-9:30AM	OUTSIDE/GYM	\$110 / 12 WEEKS
	PRE BALLET	5-8 YRS	4:00PM-4:40PM	DEVONSHIRE HOUSE	\$75 / 6 WEEKS
	BALLET 1	5-8 YRS	4:45PM-5:30PM	DEVONSHIRE HOUSE	\$75 / 6 WEEKS
FRIDAYS	MUSCIAL THEATER	6-11 YRS	5:00PM-6:00PM	DEVONSHIRE HOUSE	\$105 / 8 WEEKS + SHOWCASE
	MUSICAL THEATER	12-17 YRS	6:00PM-7:00PM	DEVONSHIRE HOUSE	\$105 / 8 WEEKS + SHOWCASE
	ADULT LINE DANCING	ADULT	10:00am-12:00pm	GYM	\$10/ MONTH
SATURDAY	PIANO & GUITAR LESSONS	5- ADULT YRS	10:00AM-4:00PM (30 MINS EACH CLASS)	GYM MULTI ROOM	\$150/ 8 WEEKS

NO CLASSES ON:
MONDAY, JANUARY 20TH
MONDAY, FEBRUARY 17TH



CITY OF LOS ANGELES DEPARTMENT OF RECREATION & PARKS NORTHRIDGE RECREATION CENTER

18300 Lemarsh St. Northridge CA. 91325
(818) 349-7341 rap.northridgerc@lacity.org



WINTER 2026 YOUTH BASKETBALL LEAGUE

DIVISION IS DETERMINED BY YEAR BORN AS OF JANUARY 1ST, 2026

DIVISION	AGE	YEAR OF BIRTH	FEES <small>Waivers are available</small>	MANDATORY EVALUATIONS
Rookies	5-6 yrs old	2019-2020	\$180	NO EVALUATIONS
Pee Wees	7-8 yrs old	2017-2018	\$180	Saturday December 6th @9:00am
Minors	9-10 yrs old	2015-2016	\$180	Saturday December 6th @10:00am
Majors	11-12 yrs old	2013-2014	\$180	Saturday December 6th @11:00am
Juniors	13-15 yrs old	2010-2012	\$180	Saturday December 6th @12:00pm
Seniors	16-17 yrs old	2008-2009	\$180	Saturday December 6th @3:30pm
GPLA Minors	9-10 yrs old	2015-2016	\$150	Saturday December 6th @1:00pm
GPLA Majors	11-12 yrs old	2013-2014	\$150	Saturday December 6th @2:00pm
GPLA Juniors	13-15 yrs old	2010-2012	\$150	Saturday December 6th @3:00pm

IF YOU QUALIFY FOR THE PLAY LA WAIVER, PLEASE FILL OUT THE INCOME VERIFICATION FORM AND ATTACH PROPER DOCUMENTATION

REGISTRATION

Online registration: Monday, November 3rd, 2025

Walk-In registration: Monday, November 17th, 2025

Payment is required in full at the time of registration

Proof of age is also required at the time of registration

Fee includes: Uniform, Trophy, Administration, Official fees and Equipment



Team Placement

In order to maintain fairness throughout our leagues:

Requests for coaches, players, and carpools **will not be accepted.**

Siblings in the same division are automatically placed on the same team.

We conduct evaluations and volunteer coaches to draft an even skill level throughout each team.

Thank you for your understanding! **PRACTICES & Games**

Practice times for each team are chosen by the volunteer coach.

Once rosters are complete, we are NOT switching your child(ren) if you cannot make the scheduled practice time. We appreciate your flexibility.

Practices will begin mid December (Tentatively)

Season will begin early January for 6-8 weeks (Tentatively)

Practices and games will be held at Northridge Rec. Center and other local recreation centers (Practices can be as early as 4:30pm!)

Refunds

Refunds, changes, or transfers that are granted to patrons will charge a NON refundable administrative fee of **15%**

Refund requests that are made after the team rosters have been completed will result in a **50%** deduction fee.

100% refunds will **ONLY** be granted if the recreation center cancels a class or sports league.

We reserve the right to combine or change divisions as necessary to enable all children to have the same equal opportunity.



PlayLA Youth and Adaptive Youth Sports Program is made possible by the LA28 Olympic and Paralympic Games. Waivers available for those who qualify, ask for details.

Persons with disabilities are welcomed to participate in our classes and programs. Reasonable accommodations will be made with prior arrangements. Please be aware that some accommodations may take 30 days or longer. Please submit your request for accommodations as soon as possible.

THERE WILL BE NO MAKE UP EVALUATIONS!

What happens if I can not make evaluations?

If you can not make evaluations, your child will simply be placed on a team at random. We have evaluations to ensure fairness in each of our teams throughout our divisions and leagues.



City of Los Angeles Rec and Parks
NORTHRIDGE RECREATION CENTER
Kamp Kaleidoscope's

WINTER

Camp '25-'26

DECEMBER 22ND - JANUARY 9TH
(No camp on December 25th or January 1st)

AGES
5YRS-13YRS

REGISTRATION OPEN! ONLINE & IN PERSON

Week	Dates	Field Trip	Cost (trip)	Cost (no trip)
1	Dec 22nd - Dec 26th	Tuesday (Dec 23rd)	\$200	\$170
2	Dec 29th - Jan 2nd (Closed on Dec 25th)	Tuesday (Dec 30th)	\$170	\$130
3	Jan 5th - Jan 9th (Closed on Jan 1st)	Tuesday (Jan 6th)	\$170	\$130

Registration

THERE IS A ONE TIME REGISTRATION PER CHILD OF

\$40

Registration includes ONE t shirt

Payment is due at time of registration

Reg fee is NON-REFUNDABLE

Extended care is included in Reg fee

Important Information

There no refunds, changes or makeups!

Your child must wear camp shirt daily!

Application Packet must be filled out PRIOR to start date

Packet can be found on our website or in the office!

Contact us:

Phone line 1 (818)349-7341 Email: rap.northridgerc@lacity.org

Camp Hours

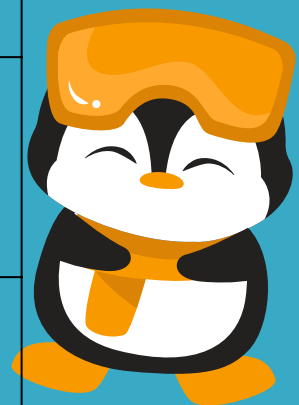
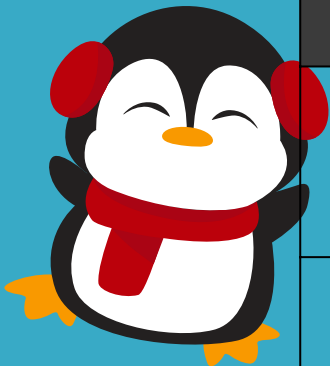
9:00am-4:00pm

Extended care:

7:30am-9:00am

&

4:00pm-6:00pm





CITY OF LOS ANGELES DEPARTMENT OF RECREATION AND PARKS

NORTHRIDGE
RECREATION
CENTER

AFTER SCHOOL PROGRAM

FOR AGES 5-10 YRS OLD

18300 LEMARSH STREET
NORTHRIDGE CA, 91325



WE PICK UP FROM:

Topeka Elementary
Beckford Elementary
Granada Hills TK-8
Calahan Elementary

Children will receive homework assistance, enjoy activities have a snack time, develop new interests, make new friends, and have lots of fun!

MONTHLY CHARGE:

WE FOLLOW THE LAUSD SCHOOL SCHEDULE



REGISTRATION
FEE
\$40
PER CHILD

Scan Here
to register
now!!



Contact us for more questions:

Line 1: 818-349-7341

Line 2: 818-349-7342

Email: rap.northridgerc@lacity.org





NORTHRIDGE RECREATION CENTER EARLY LEARNING PROGRAM



Our Early Learning Program a high-quality preschool program designed to promote children's cognitive and social development before entering kindergarten.

FIRST DAY: AUGUST 19TH

3-5
Years old

Our Programing:



DAYS & HOURS:
Monday - Thursday
9:00am-12:00pm
AUGUST - MAY

CLASS LOCATION:
Child Care Building

WE GO BASED OFF OF THE LAUSD SCHOOL SCHEDULE

**MUST BE TOILET
TRAINED!**



MONTHLY CHARGE:

AUGUST \$210	SEPTEMBER \$250	OCTOBER \$250	NOVEMBER \$225	DECEMBER \$150
JANUARY \$245	FEBRUARY \$250	MARCH \$250	APRIL \$225	MAY \$250

PLUS A REGISTRATION FEE PER CHILD:
\$40 (NON REFUNDABLE)

For more questions contact us:

Line 1: 818-349-7341 Line 2: 818-349-7342 Email: rap.northridgerc@lacity.org

UPCOMING...

YOUTH SPRING SPORTS 2025

REGISTRATION BEGINS: ONLINE FEBRUARY 3RD IN PERSON FEBRUARY 18TH

FEES WILL BE AVAILABLE CLOSER TO REGISTRATION DATE.



CO-REC BASEBALL & SOFTBALL

DIVISION	AGE	YEAR OF BIRTH
TBALL	5-6 yrs	2018-2019
COACH PITCH	7-8 yrs	2016-2017
MINORS	9-10 yrs	2014-2015
MAJORS	11-12 yrs	2012-2013
GPLA MINORS	9-10 YRS	2014-2015
GPLA MAJORS	11-12 YRS	2012-2013

GPLA

CO-REC & GPLA SOCCER

DIVISION	AGE	YEAR OF BIRTH
LIL KICKERS	3-4 yrs	2020-2021
ROOKIES	5-6 yrs	2018-2019
PEE WEES	7-8 yrs	2016-2017
MINORS	9-10 yrs	2014-2015
MAJORS	11-12 yrs	2012-2013
GPLA MINORS	9-10 yrs	2014-2015
GPLA MAJORS	11-12 yrs	2012-2013

GPLA VOLLEYBALL

DIVISION	AGE	YEAR OF BIRTH
GPLA MINORS	9-10 yrs	2018-2019
GPLA MAJORS	11-12 yrs	2016-2017
GPLA JUNIORS	13-15 yrs	2014-2015
GPLA MAJORS	11-12 YRS	2012-2013

Persons with disabilities are welcomed to participate in our classes and programs. Reasonable accommodations will be made with prior arrangements. Please be aware that some accommodations may take 30 days or longer. Please submit your request for accommodations as soon as possible.



PlayLA Youth and Adaptive Youth Sports Program is made possible by the LA28 Olympic and Paralympic Games. Waivers available for those who qualify, ask for details.

SCAN HERE
TO REGISTER
NOW!!





CITY OF LOS ANGELES



Department of Recreation & Parks

Mayor: Karen Bass

Council Member: John Lee, 12th District

Board of Recreation and Parks Commissioners

Renata Simril, President

Luis Sanchez, Vice-President

Tafari Bayne, Member

Fiona Hutton, Member

Benny Tran, Member

Department Administration

Jimmy Kim General Manager

Matthew Rudnick Executive Officer & Chief of Staff

Chinyere Stoneham Assistant General Manager Recreation Services

Brenda Aguirre Assistant General Manager

Cathie Santo Domingo Assistant General Manager Planning,
Maintenance, & Construction B

Valley Region Administration

Vacant, Superintendent

Laura Island, Principal Recreation Supervisor II

Juan Aynat, Principal Supervisor I

Cynthia Dib, West Valley District Supervisor

Facility Administration

J. Dwayne Finley, Senior Recreation Director II

Roy Koh, Recreation Coordinator

Recreation Assistants

Michael Alvarado, Paige Burk, Bruce Christensen,
Amanda Flores, Colby Haney, David Lopez, Rick Oliva,
Joshua Pasa, Edith Perez, Jasmine Santamaria,
Jason Santamaria, Brittney Staves, Robert Stigile,
Kyle Thomas, Daniel Gonzalez

Maintenance Staff

Jimena Marquez - Gardener

Susie Zamudio

Selena Mendez

Christian Roney

