



City of Los Angeles Department of Recreation and Parks
Roz Wyman RC @ Palms Park
2950 Overland Ave, Los Angeles, CA 90064
palms.recreationcenter@lacity.org 310.838.3838



PALMS PARK

WINTER DAY CAMP 2025

REGISTRATION BEGINS
NOVEMBER 24TH AT 9:00 A.M. (ONLINE ONLY)

All camps have a \$40 one time non-refundable registration fee.

DAY CAMP COLOR CHEAT SHEET

RED GROUP	ENTERING K FALL 2026
ROYAL GROUP	ENTERING 1ST FALL 2026
GREEN GROUP	ENTERING 2ND-3RD FALL 2026
BLUE GROUP	ENTERING 4TH-5TH FALL 2026

PPCC CAMP

WEEK #1: DEC 22-24

WEEK #2: DEC 29-31

Entering TK in Fall 2026

Monday - Wednesday, 9:00 AM - 12:00 PM

Week #1 - \$115

Week #2 - \$115

DAY CAMP

WEEK #1: DEC 22-24

WEEK #2: DEC 29-31

WEEK #3 JAN 5-9

Entering Grades K - 5th in Fall 2026

Monday - Wednesday, 9:00 AM - 3:00 PM

Week #1 - \$180 *no afternoon EC on 12/24 and no camp on 12/25

Week #1 - \$60 - 12/26 only

Week #2 - \$180 *no afternoon EC on 12/31 and no camp on 1/1

Week #2 - \$60 - 1/2 only

Week #3 - \$300 Mon-Fri 9AM-3PM

Week #3 - \$60 - OPTIONAL - FIELD TRIP - JOHN'S INCREDIBLE PIZZA

CAMP 2950

WEEK #1: DEC 22-24

WEEK #2: DEC 29-31

WEEK #3 JAN 5-9

Entering Grades 6-8th in Fall 2026

Monday - Wednesday, 9:00 AM - 3:00 PM

Week #1 - \$240 *no afternoon EC on 12/24 and no camp on 12/25

Week #1 - \$80 - 12/26 only

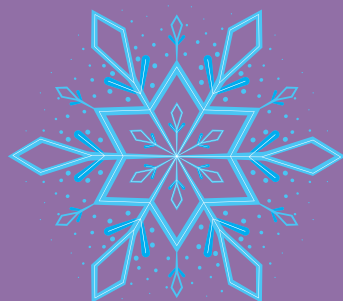
Week #2 - \$240 *no afternoon EC on 12/31 and no camp on 1/1

Week #2 - \$80 - 1/2 only

Week #3 - \$400 Mon-Fri 9AM-3PM

*IF MINIMUM REGISTRATION IS NOT MET,
CAMP 2950 WILL BE CANCELLED

Rates and programs are subject to change and/or cancellation.





How to Register

REGISTRATION CLOSES THE WEDNESDAY PRIOR TO EACH WEEK OF CAMP BY 12:00PM - NO EXCEPTIONS!

1. Go to laparks.org/reccenter/palms
2. Click on the blue "Register Now" button.
3. All activities in the PALMS catalog will appear. To add an activity, click on the plus sign to its left. Then, at the very bottom of the screen, a banner will prompt you to add it to your cart.
4. Add all weeks of camp to your cart that you wish to register for. Answer any prompts or registration information when asked.
5. Add all weeks of Extended Care that you wish to register for. Answer any prompts or registration information when asked.
6. Read all applicable waivers and click "Continue".
7. Proceed to the Shopping Cart, then "Proceed to Checkout" to complete the payment process.
8. Once your receipt appears, your payment is complete.
9. Fill out a Winter Camp Registration Form and return it to the office or email it to palms.recreationcenter@lacity.org

Refund Policy.



All refund request must be made by the Wednesday prior to the start of the session. A 15% administrative fee will be assessed by the City of Los Angeles Dept. of Recreation and Parks for any patron granted a refund. Full refunds are only issued when the program is cancelled by the Recreation Center. Send all refund requests via email to palms.recreationcenter@lacity.org.

There are no refunds or credits for missed days.

Registration begins November 24th



General Information

What To Bring To Camp

T-SHIRTS / ATTIRE

Campers must wear a Palms Park camp t-shirt every day. Each camper will receive 2 free t shirts.

Additional shirts may be purchased for \$10 each.

Tennis shoes must be worn at all times.

(No Crocs or sandals allowed)

LUNCH & SNACK

Please provide your camper with a lunch & reusable water bottle daily.

Lunch is not available for purchase.

A snack will be provided daily at 3:15pm for each camper that attends Afternoon Extended Care.

If your camper has dietary restrictions (i.e. kosher, allergies), please send them with their own snack.



EXTENDED CARE

8:00-9:00am and 3:00-6:00pm

UNLIMITED -

\$40/ Week 1

\$40/ Week 2

\$60/Week 3

must be purchased in advance.

Children not enrolled in Extended Care will be charged \$1/minute at the start of each Extended Care day.

Children not picked up by 6pm will be charged a \$1/minute late fee.

Extended Care is intended for supervision only, and no organized activities will take place during this time. Extended Care is not available for campers enrolled in the PPCC Camp.

DISCOUNTS AND SCHOLARSHIPS

There may be discounts available for those who qualify.

Proof of income is required.



**RATES AND PROGRAMS ARE SUBJECT TO
CHANGE AND/OR CANCELLATION.**