

Seoul International Park
City of Los Angeles - Department of Rec. & Parks
Metro Region - Central District
3250 San Marino St. Los Angeles, CA 90006
Tel: 213-383-7549

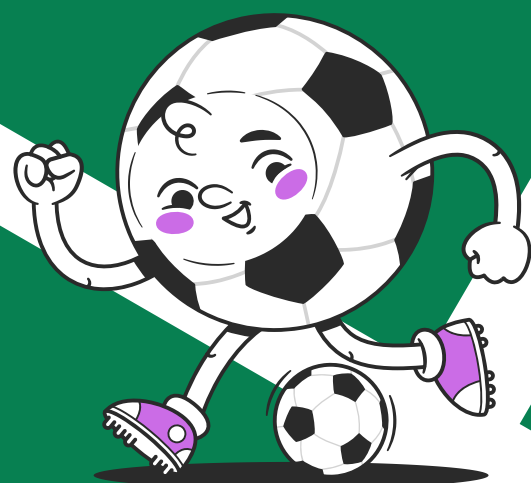


WINTER 2026 GPLA SOCCER

REGISTRATION BEGINS NOVEMBER 3, 2025

LEAGUE BEGINS WEEK OF JANUARY 10, 2026

Ask us how to become a volunteer coach!



EVALUATION

DIVISION
GPLA MINORS (9-10)
GPLA MAJORS (11-12)

DATE:
SATURDAY, DEC. 13TH
SATURDAY, DEC. 13TH

TIME
12 PM
12 PM

Persons with disabilities are welcome to participate in our programs. Reasonable accommodations will be made with prior arrangements. A 15% cancellation fee is assessed for all refunds. Information on this flyer is subject to change without notice. Scholarships are available.

PlayLA Youth and Adaptive Youth Sport Programs is made possible by the LA28 Olympic and Paralympic Games. Waivers available for those who qualify, ask for details.

