

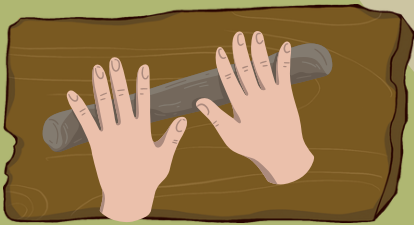


Silver Lake Recreation Center
1850 W. Silver Lake Drive, Los Angeles CA 90026
(323) 644-3946
silverlake.recreationcenter@lacity.org



Kids

Oven Clay Workshop



Registration Opens: September 8th

Every Wednesday for 8 weeks

Classes Begin: October 8

Open to ages 7+



@silverlakercla

FOLLOW US

Silver Lake Recreation Center reserves the right to cancel, change, or substitute programs or activities listed in this flyer. There will be no refunds after the program start date. A 15% administrative fee will be deducted from all approved refunds. If you are a person with a disability and require accommodation to participate in a City of Los Angeles Department of Recreation and Parks program, service, or activity, requests may be made by calling the facility (facility phone number here), or 711 for CA Relay, ten days in advance of the event. We will do our best to fulfill requests with less than ten business days' notice. If a participant requires a one to one aide, requests will be fulfilled within seven business days of receiving required paperwork and documentation needed to issue a Right of Entry Permit to the agency providing the aide.

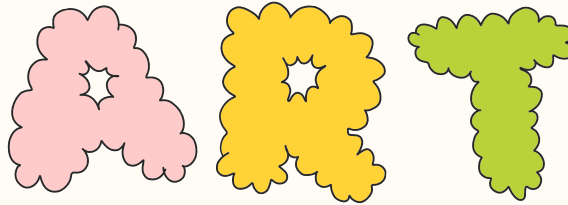
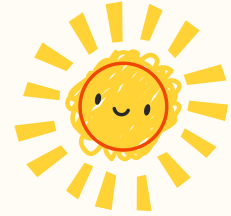


Silver Lake Recreation Center
1850 W. Silver Lake Drive, Los Angeles CA 90026
(323) 644-3946
silverlake.recreationcenter@lacity.org



JOIN US FOR A

KIDS ART WORKSHOP



Mondays from: 5-6pm



Age: 5-7 years old

8 Classes

Fee: \$100



Registration Opens: September 8th

Classes Begin: October 6th



@silverlakercla

FOLLOW US

Silver Lake Recreation Center reserves the right to cancel, change, or substitute programs or activities listed in this flyer. There will be no refunds after the program start date. A 15% administrative fee will be deducted from all approved refunds. If you are a person with a disability and require accommodation to participate in a City of Los Angeles Department of Recreation and Parks program, service, or activity, requests may be made by calling the facility (facility phone number here), or 711 for CA Relay, ten days in advance of the event. We will do our best to fulfill requests with less than ten business days' notice. If a participant requires a one to one aide, requests will be fulfilled within seven business days of receiving required paperwork and documentation needed to issue a Right of Entry Permit to the agency providing the aide.